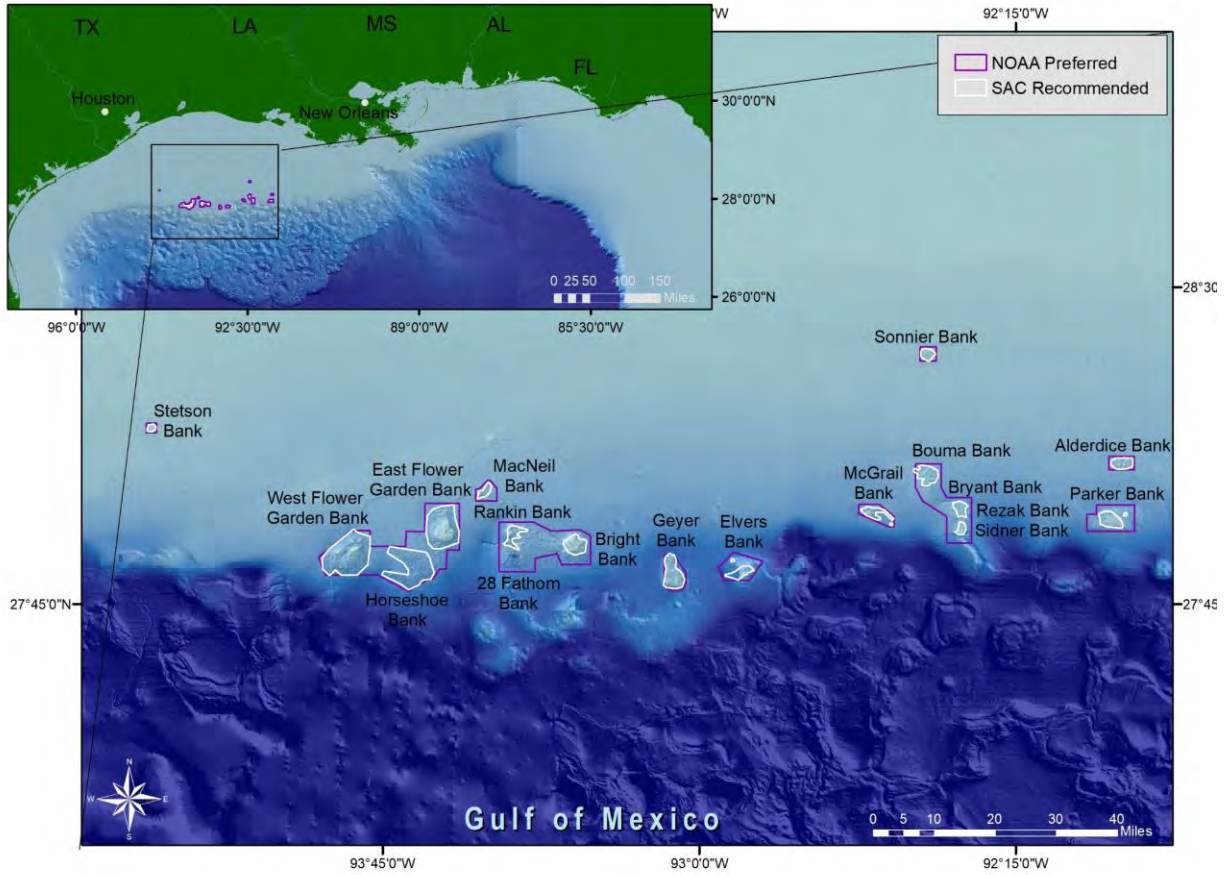


**Flower Garden Banks National Marine Sanctuary Expansion:  
Sanctuary Advisory Council Recommendation  
May 2018**

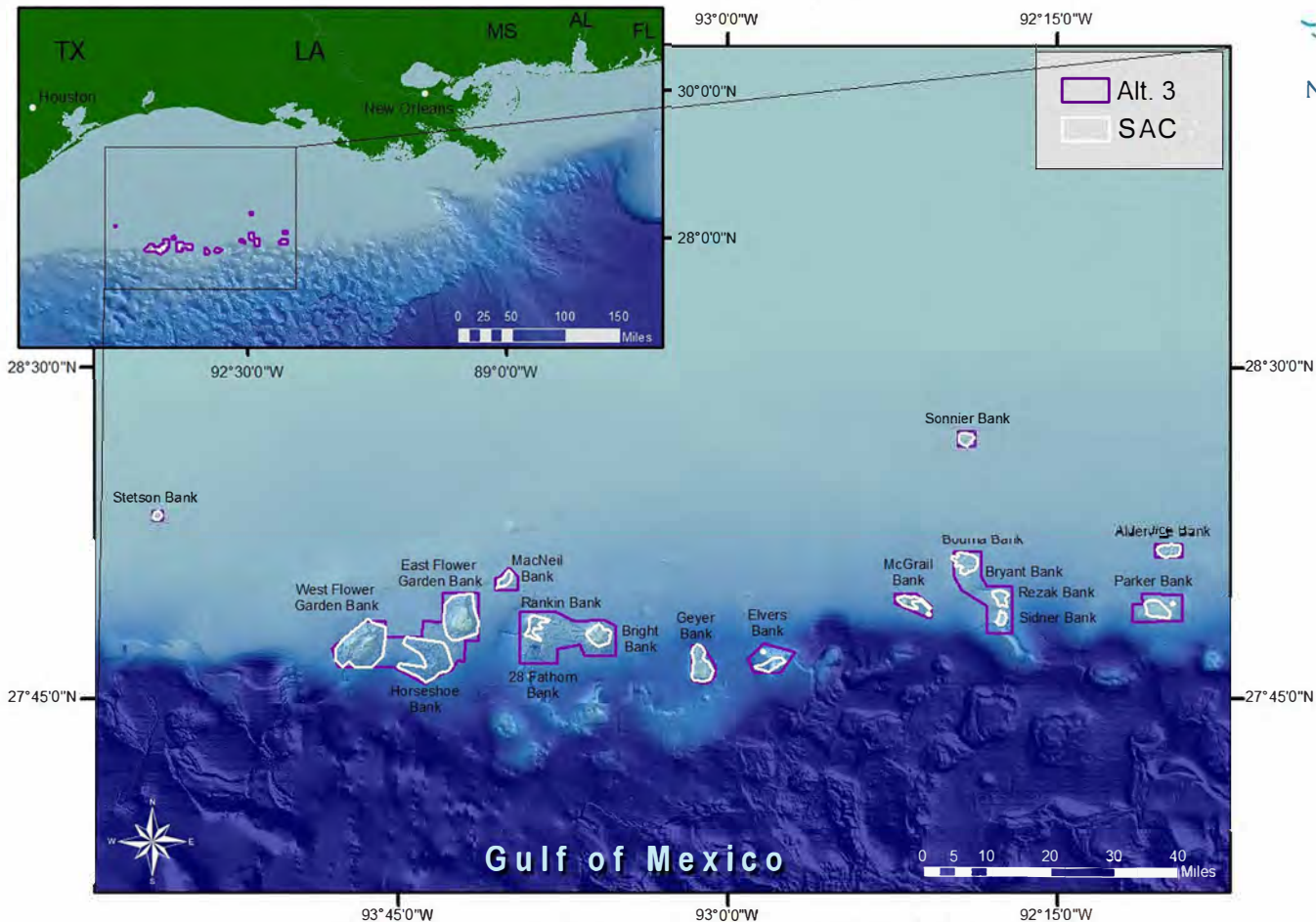


The maps contained herein detail the fifteen reefs and banks considered by the Boundary Expansion Working Group, fourteen of which were presented to, and accepted by the Sanctuary Advisory Council for adoption on May 9, 2018.





# Flower Garden Banks National Marine Sanctuary Advisory Council Recommendations



Sanctuary Advisory Council Meeting  
Approved May 9, 2018

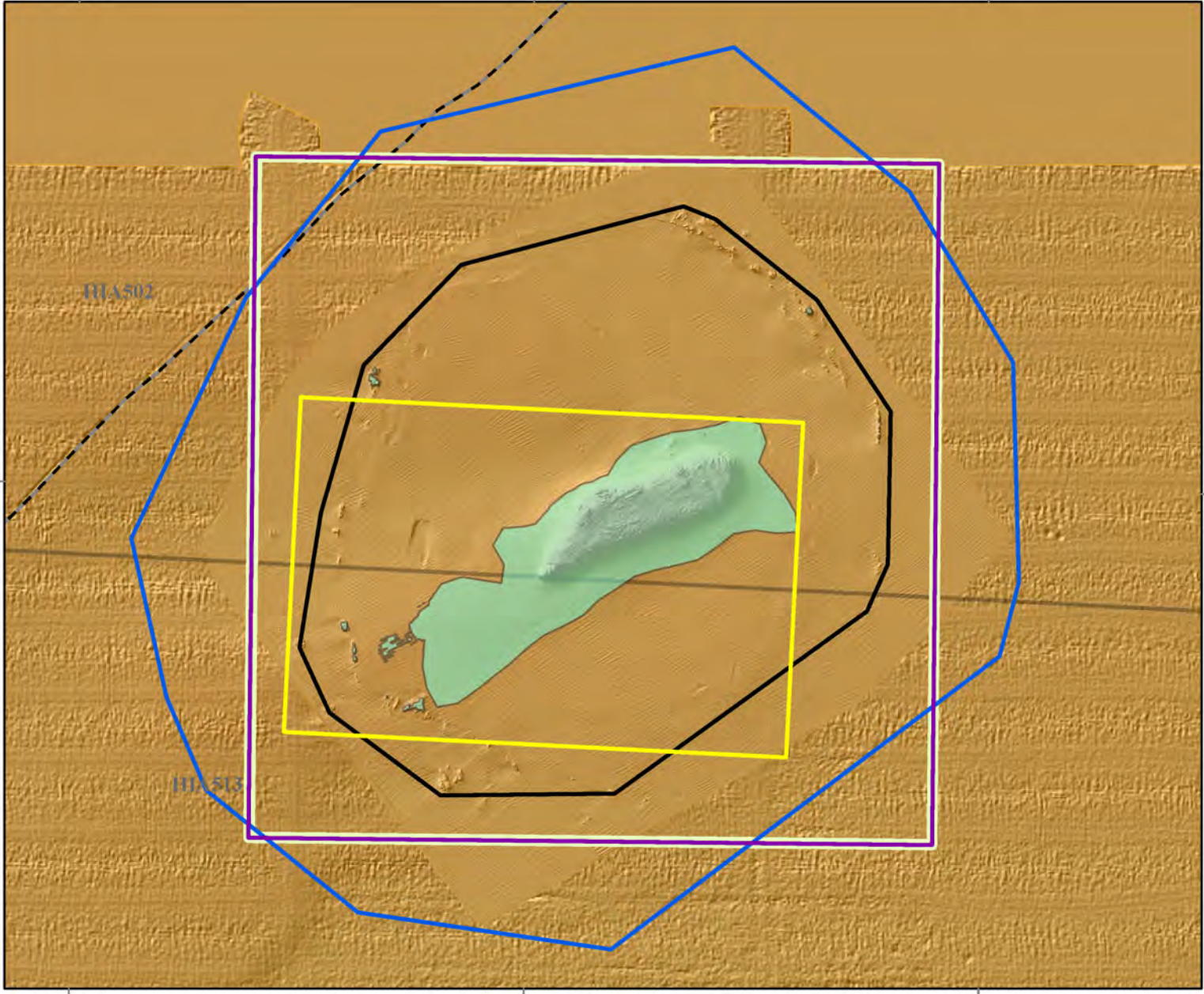


# FGBNMS Advisory Council Recommendation Stetson Bank



94°19'W                      94°18'W                      94°17'W

28°10'N



**LEGEND**

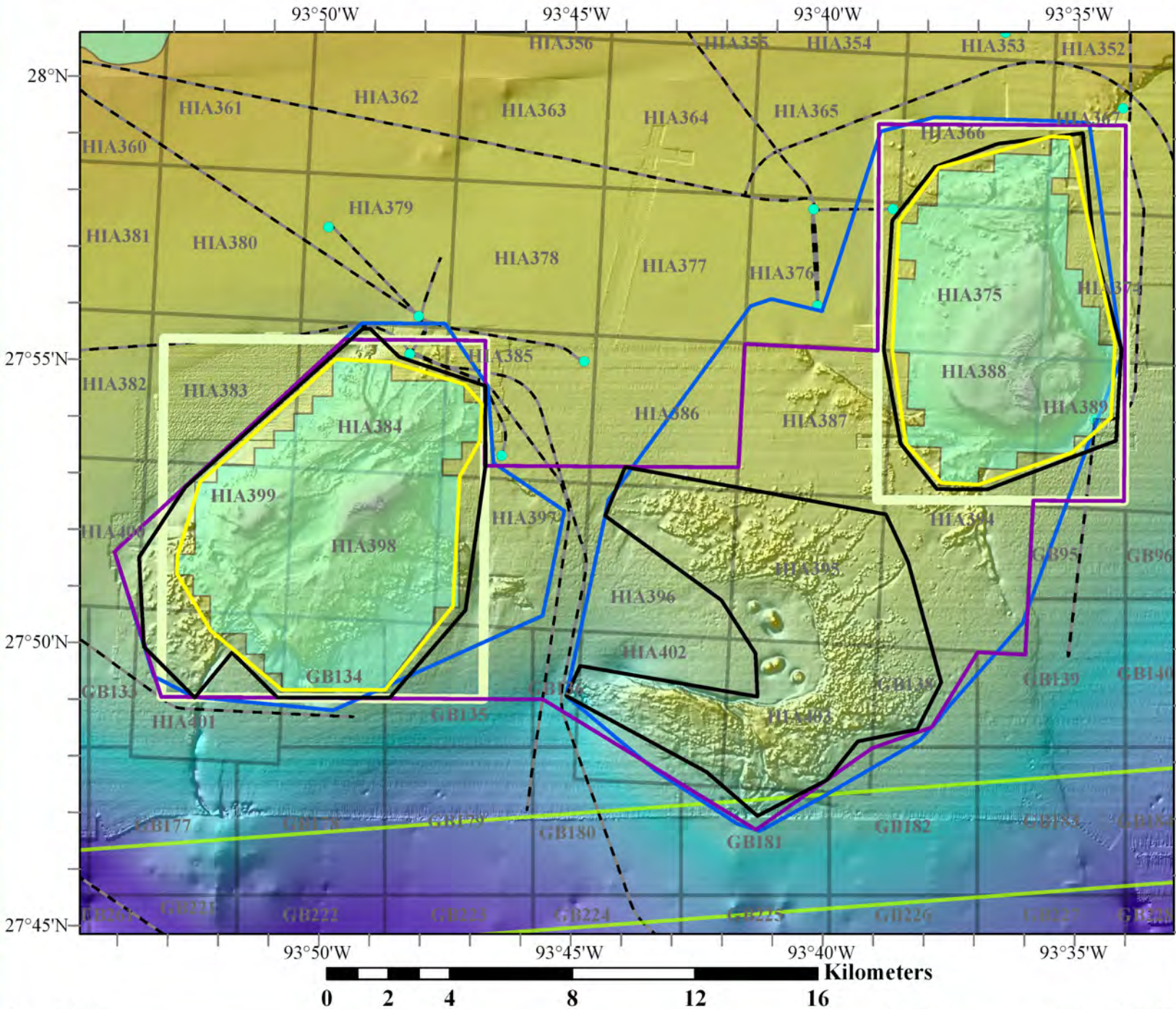
- ADVISORY COUNCIL**
- FGB Alternatives**
  - Alt. 3
  - Alt. 2
  - FGBNMS Boundaries
- Gulf of Mexico Fisheries Management Council**
  - Habitat Area of Particular Concern
- Bureau of Ocean Energy Management**
  - Pipeline
  - No Activity Zone
  - Lease Blocks
- Bathymetry**
  - High : 15m
  - Low : 473m

94°19'W                      94°18'W                      94°17'W



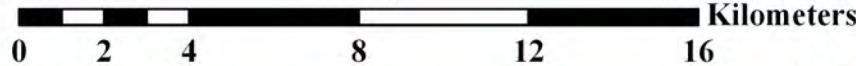


# FGBNMS Advisory Council Recommendation Flower Garden Banks Complex



**LEGEND**

- ADVISORY COUNCIL
- FGB Alternatives**
  - Alt. 3
  - Alt. 2
  - FGBNMS Boundaries
- Gulf of Mexico Fisheries Management Council**
  - Habitat Area of Particular Concern
- Bureau of Ocean Energy Management**
  - Platform
  - Pipeline
  - No Activity Zone
  - Lease Blocks
  - Shipping Fairway
- Bathymetry**
  - High : 15m
  - Low : 473m



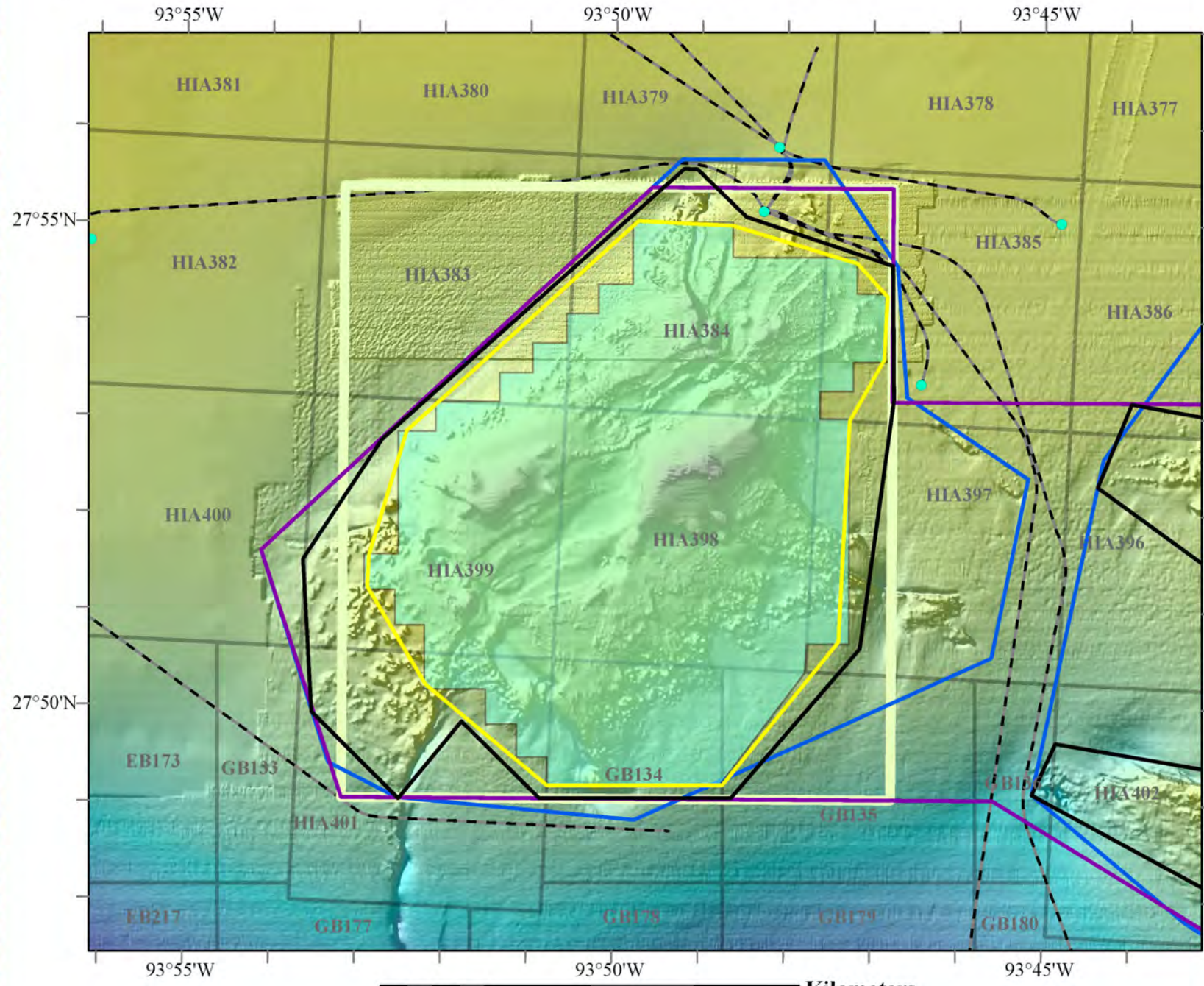
June 2018

Bathymetry courtesy of USGS, UNH, Gardner and NOAA





# FGBNMS Advisory Council Recommendation West Flower Garden Bank



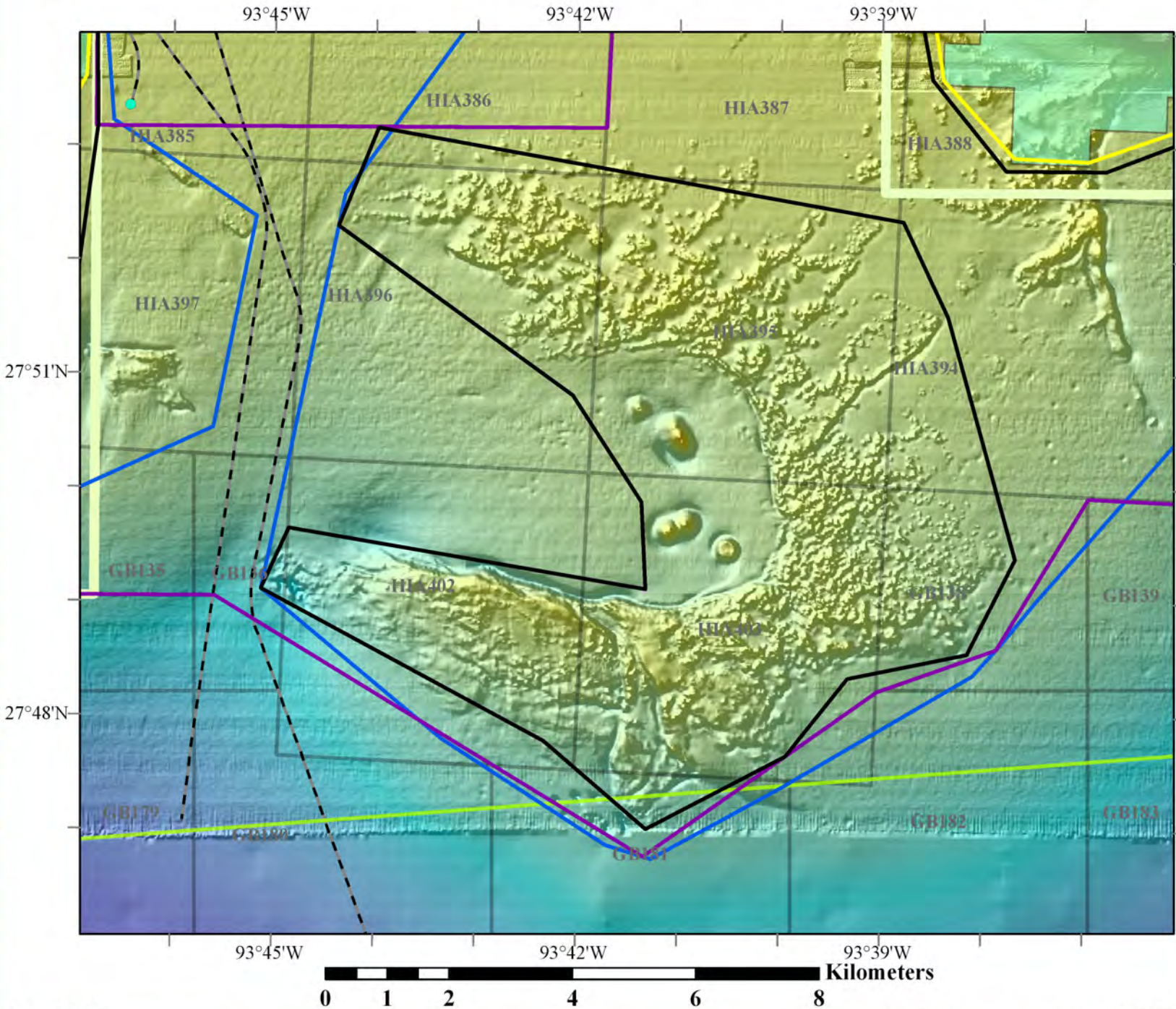
**LEGEND**

- ADVISORY COUNCIL
- FGB Alternatives**
  - Alt. 3
  - Alt. 2
  - FGBNMS Boundaries
- Gulf of Mexico Fisheries Management Council**
  - Habitat Area of Particular Concern
- Bureau of Ocean Energy Management**
  - Platform
  - Pipeline
  - No Activity Zone
  - Lease Blocks
- Bathymetry**
  - High : 15m
  - Low : 473m





# FGBNMS Advisory Council Recommendation Horseshoe Bank



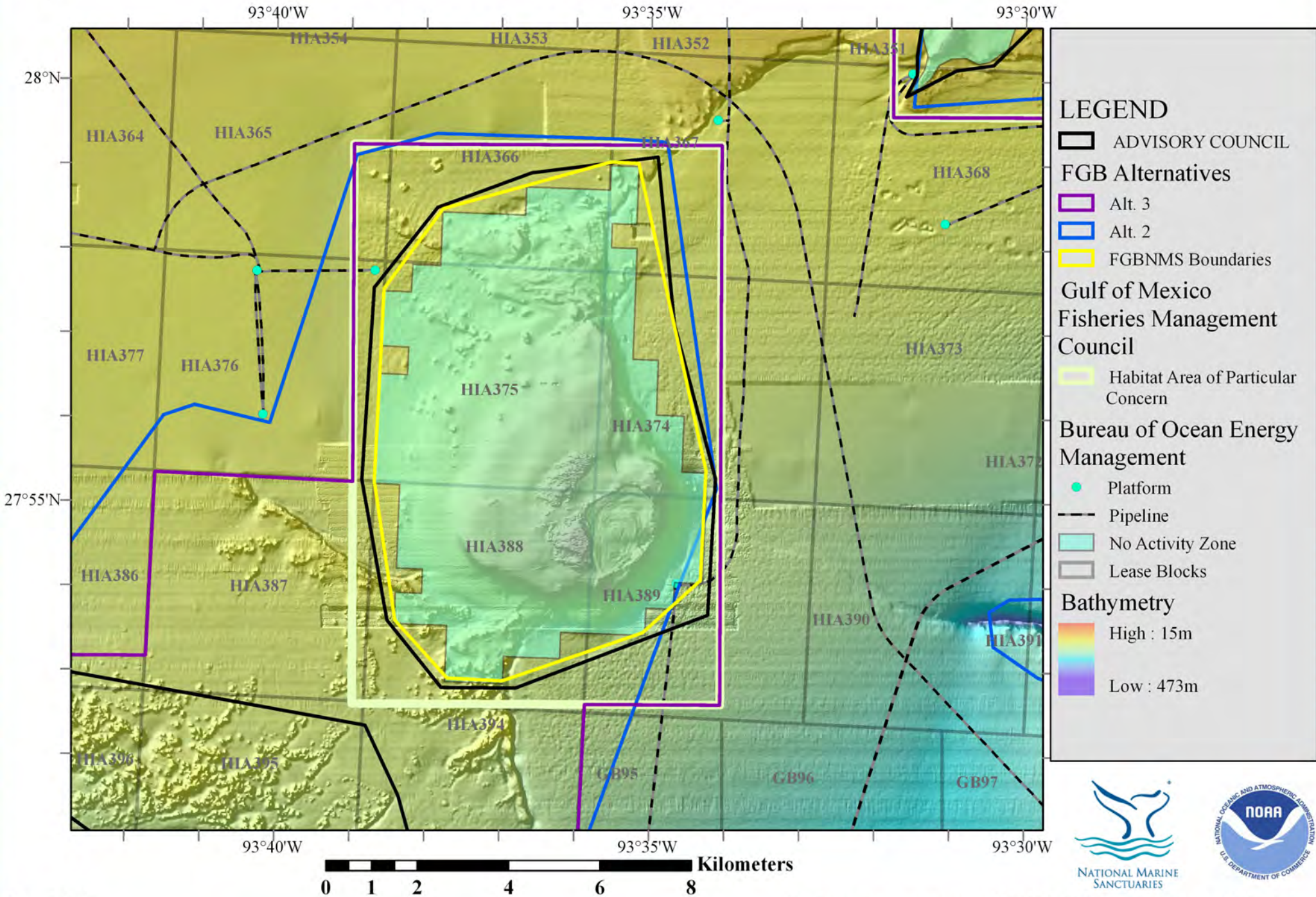
**LEGEND**

- ADVISORY COUNCIL
- FGB Alternatives**
  - Alt. 3
  - Alt. 2
  - FGBNMS Boundaries
- Gulf of Mexico Fisheries Management Council**
  - Habitat Area of Particular Concern
- Bureau of Ocean Energy Management**
  - Platform
  - Pipeline
  - No Activity Zone
  - Lease Blocks
- Bathymetry**
  - High : 15m
  - Low : 473m



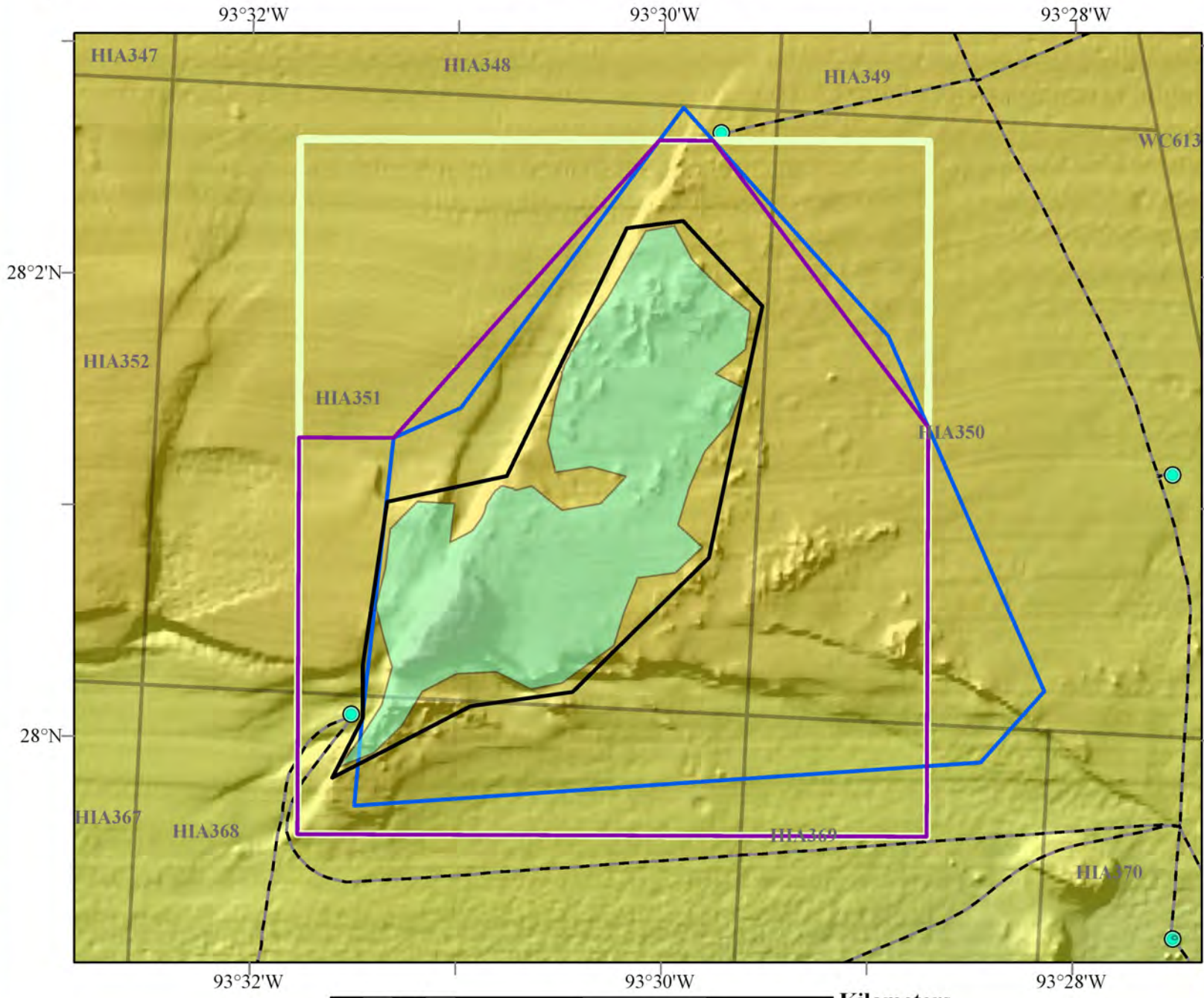


# FGBNMS Advisory Council Recommendation East Flower Garden Bank



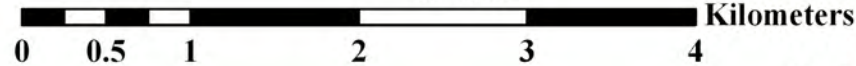


# FGBNMS Advisory Council Recommendation MacNeil Bank



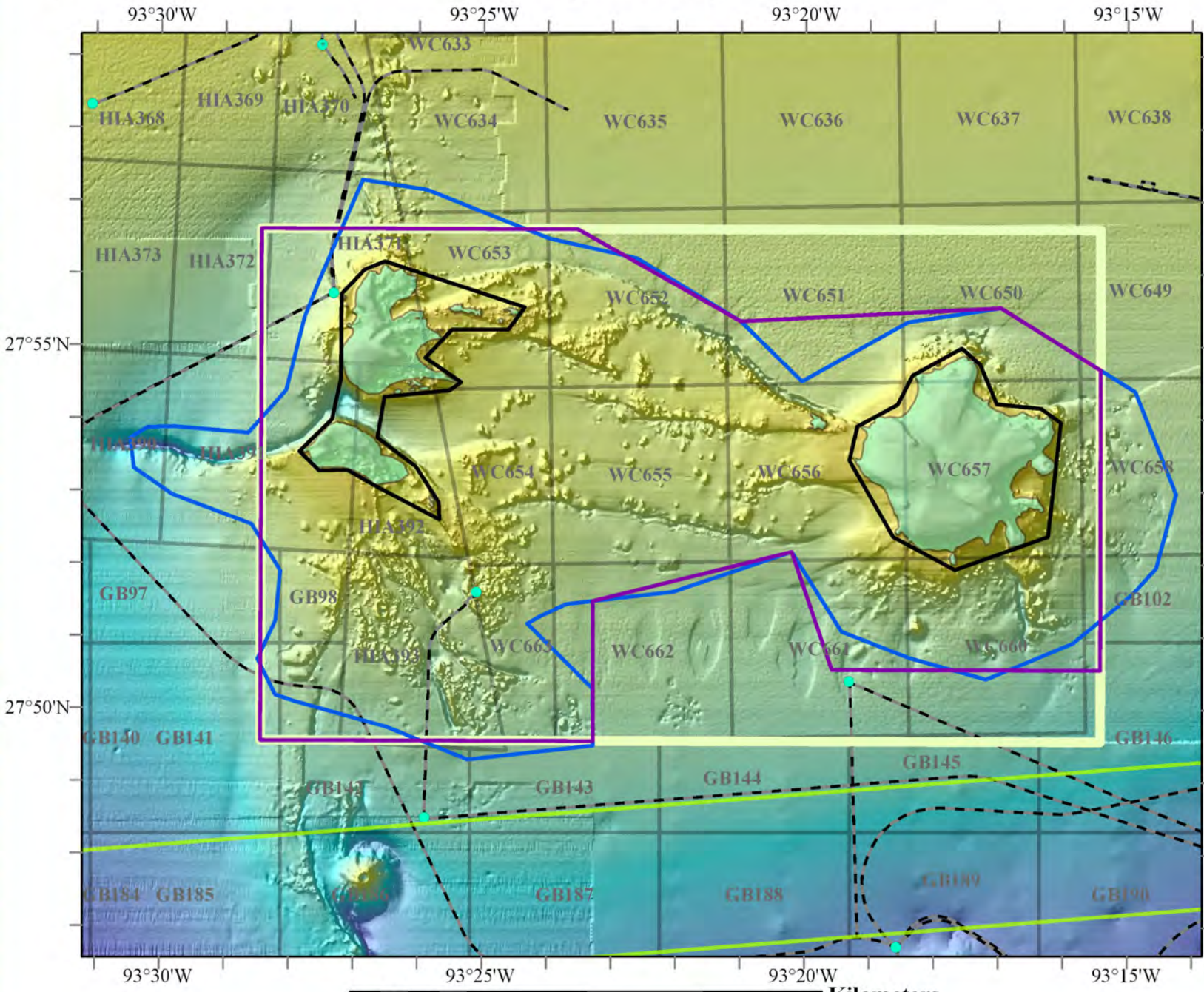
**LEGEND**

- Advisory Council
  - Black outline
- FGB Alternatives
  - Alt. 3 (Purple outline)
  - Alt. 2 (Blue outline)
- Advisory Council
  - FGBNMS Boundaries (Yellow outline)
- GMFMC
  - HAPC (Yellow outline)
- BOEM
  - Platform (Red dot)
  - Pipeline (Dashed line)
  - No Activity Zone (Light blue area)
  - Lease Blocks (Grey area)
  - Shipping Fairway (Green line)
- Bathy
  - High : 15m (Red)
  - Low : 473m (Purple)





# FGBNMS Advisory Council Recommendation Bright Complex



**LEGEND**

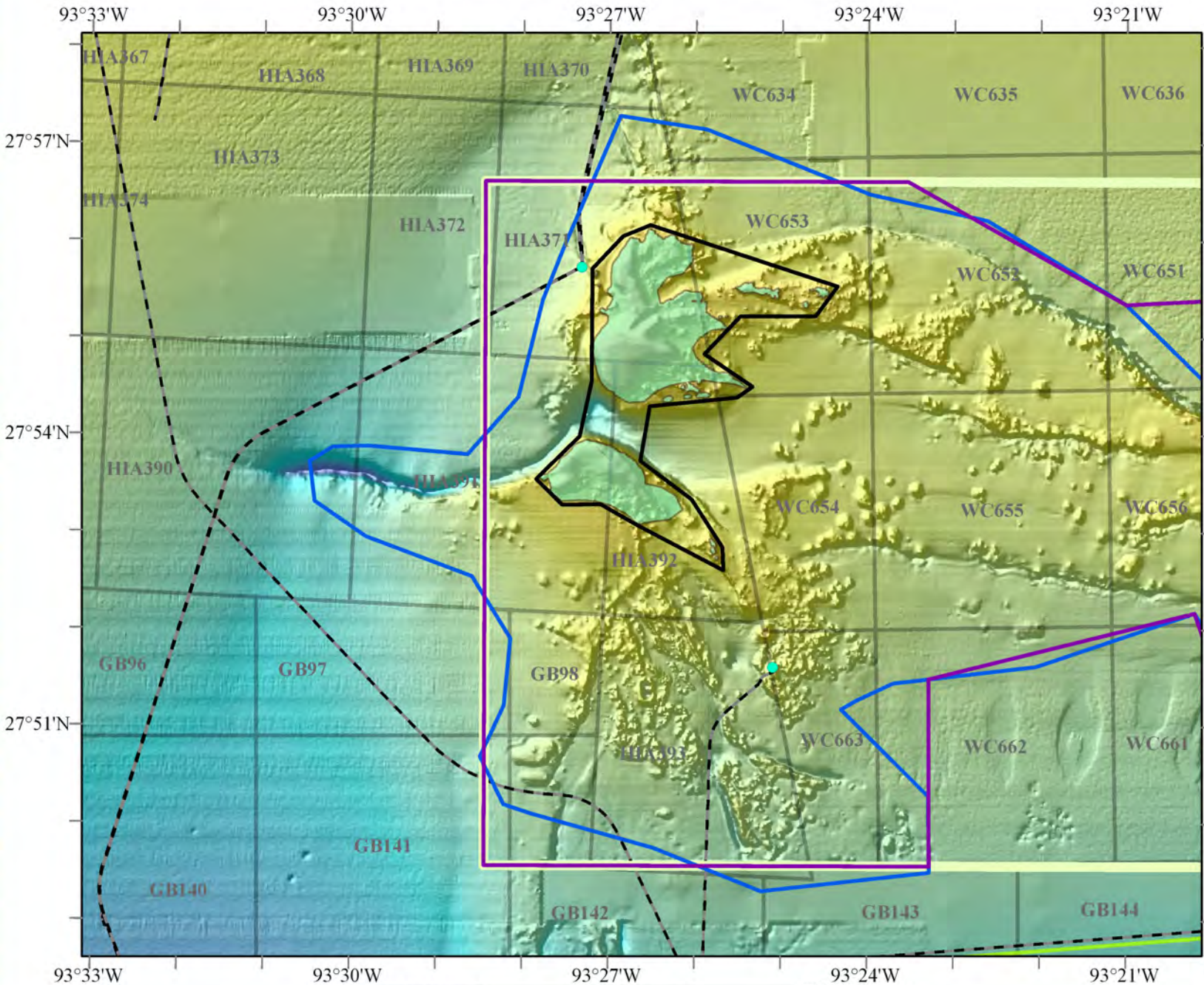
- ADVISORY COUNCIL
- FGB Alternatives**
  - Alt. 3
  - Alt. 2
- Gulf of Mexico Fisheries Management Council**
  - Habitat Area of Particular Concern
- Bureau of Ocean Energy Management**
  - Platform
  - Pipeline
  - No Activity Zone
  - Lease Blocks
  - Shipping Fairway
- Bathymetry**
  - High : 15m
  - Low : 473m





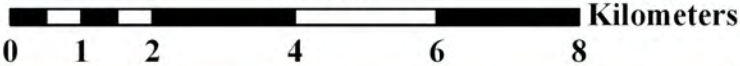
# FGBNMS Advisory Council Recommendation

## Rankin/28 Fathom Banks



**LEGEND**

- ADVISORY COUNCIL
- FGB Alternatives**
  - Alt. 3
  - Alt. 2
- Gulf of Mexico Fisheries Management Council**
  - Habitat Area of Particular Concern
- Bureau of Ocean Energy Management**
  - Platform
  - Pipeline
  - No Activity Zone
  - Lease Blocks
  - Shipping Fairway
- Bathymetry**
  - High : 15m
  - Low : 473m



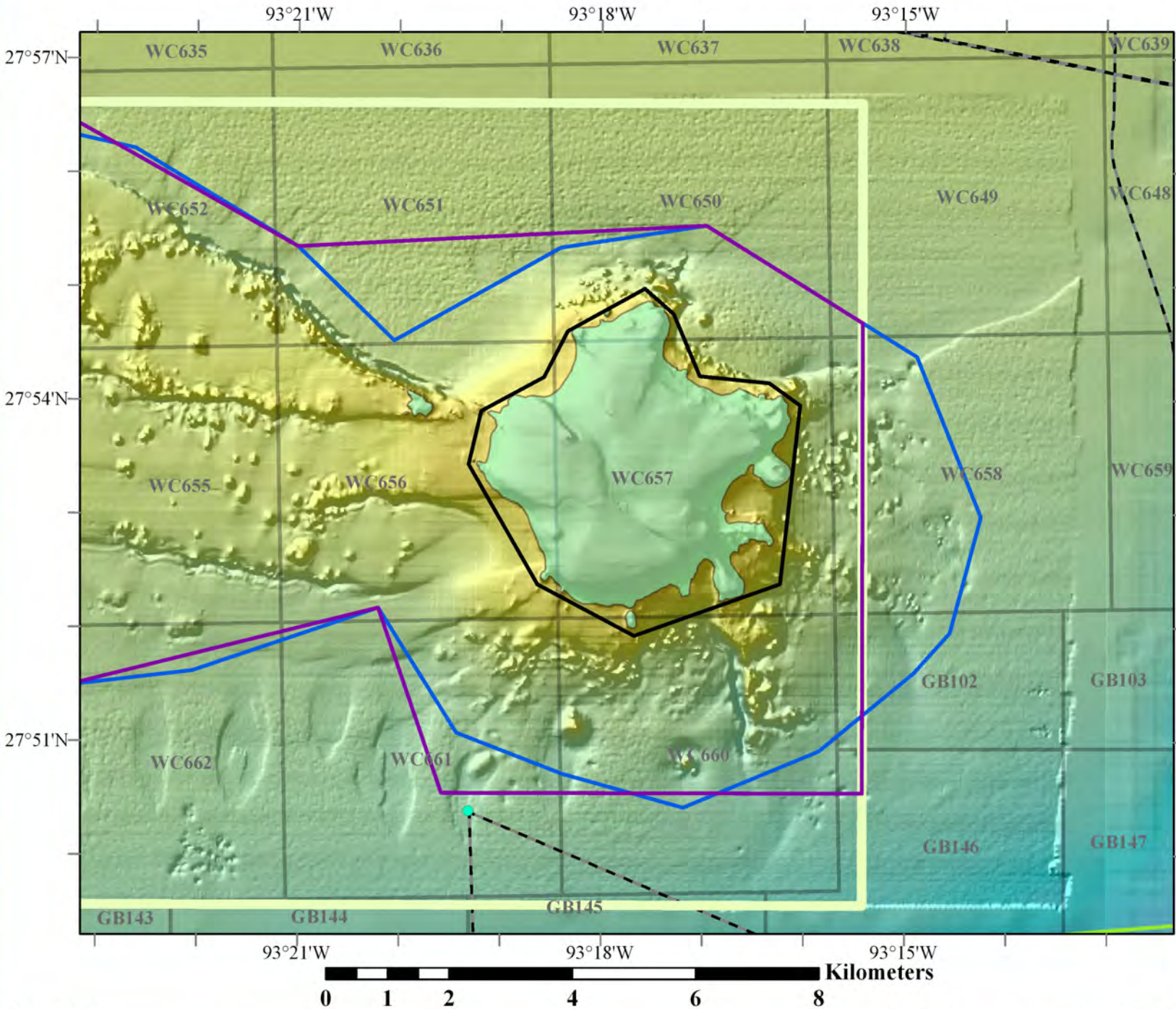
June 2018

Bathymetry courtesy of USGS, UNH, Gardner and NOAA





# FGBNMS Advisory Council Recommendation Bright Complex



**LEGEND**

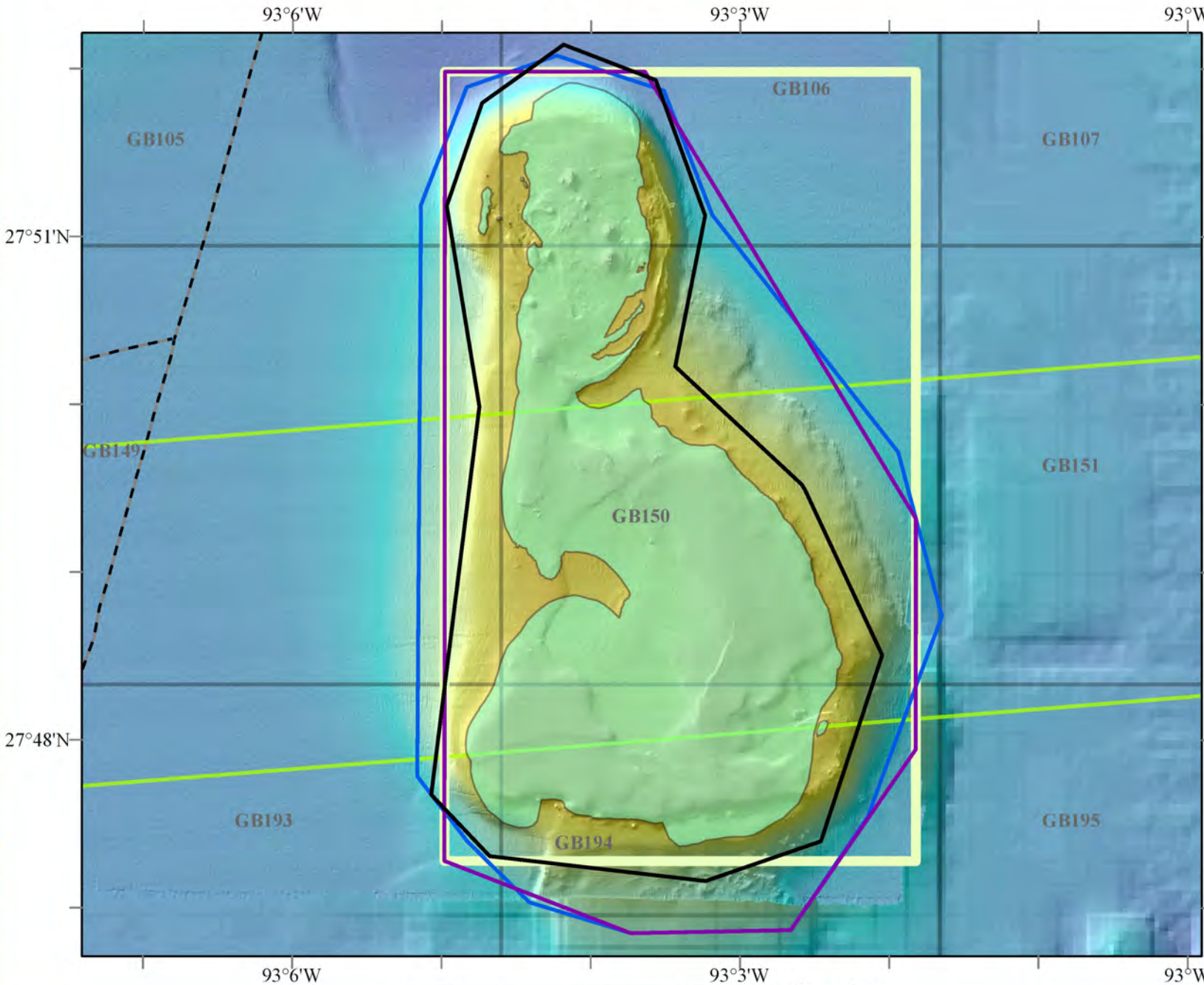
- ADVISORY COUNCIL
- FGB Alternatives**
  - Alt. 3
  - Alt. 2
- Gulf of Mexico Fisheries Management Council**
  - Habitat Area of Particular Concern
- Bureau of Ocean Energy Management**
  - Platform
  - Pipeline
  - No Activity Zone
  - Lease Blocks
  - Shipping Fairway
- Bathymetry**
  - High : 15m
  - Low : 473m





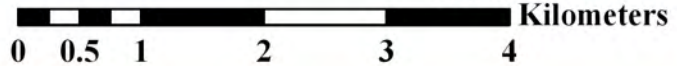
# FGBNMS Advisory Council Recommendation

## Geyer Bank



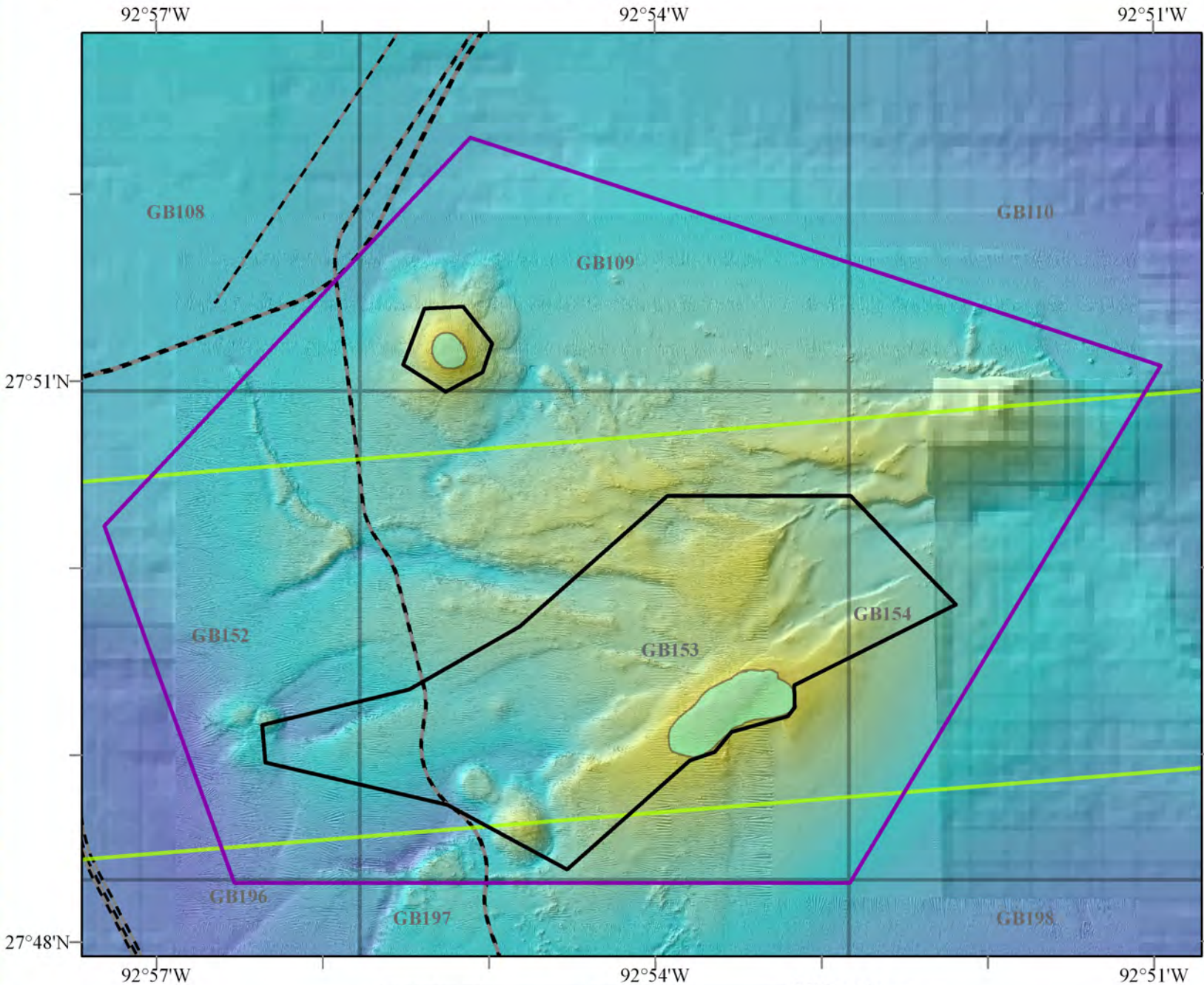
**LEGEND**

- ADVISORY COUNCIL
- FGB Alternatives**
  - Alt. 3
  - Alt. 2
- Gulf of Mexico Fisheries Management Council**
  - Habitat Area of Particular Concern
- Bureau of Ocean Energy Management**
  - Pipeline
  - No Activity Zone
  - Lease Blocks
  - Shipping Fairway
- Bathymetry**
  - High : 15m
  - Low : 473m



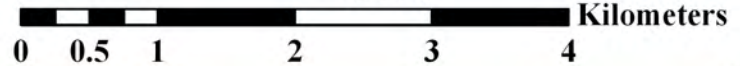


# FGBNMS Advisory Council Recommendation Elvers Bank



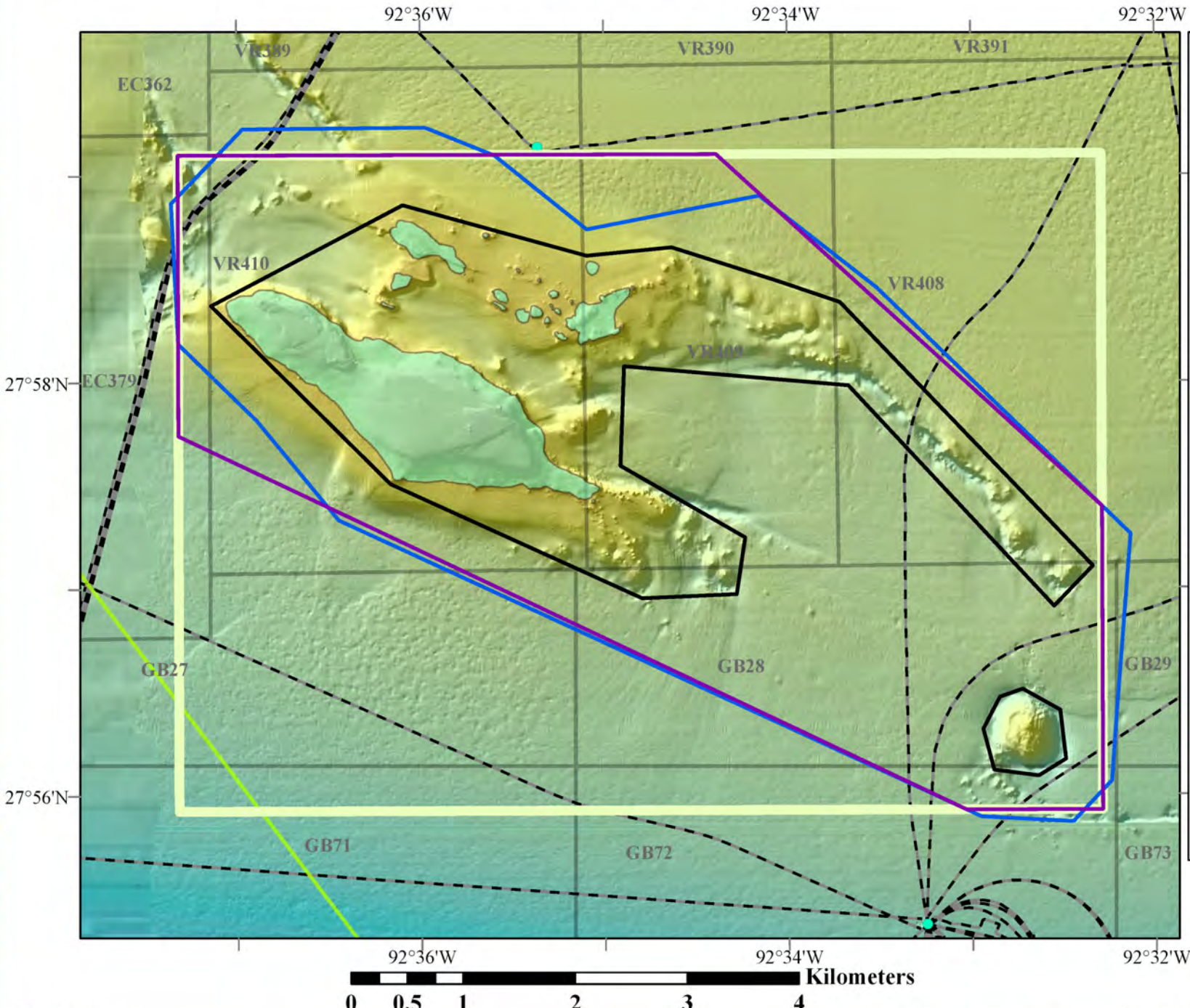
**LEGEND**

- ADVISORY COUNCIL**
- FGB Alternatives**
  - Alt. 3**
- Bureau of Ocean Energy Management**
  - Pipeline**
  - No Activity Zone**
  - Lease Blocks**
  - Shipping Fairway**
- Bathymetry**
  - High : 15m**
  - Low : 473m**





# FGBNMS Advisory Council Recommendation McGrail Bank



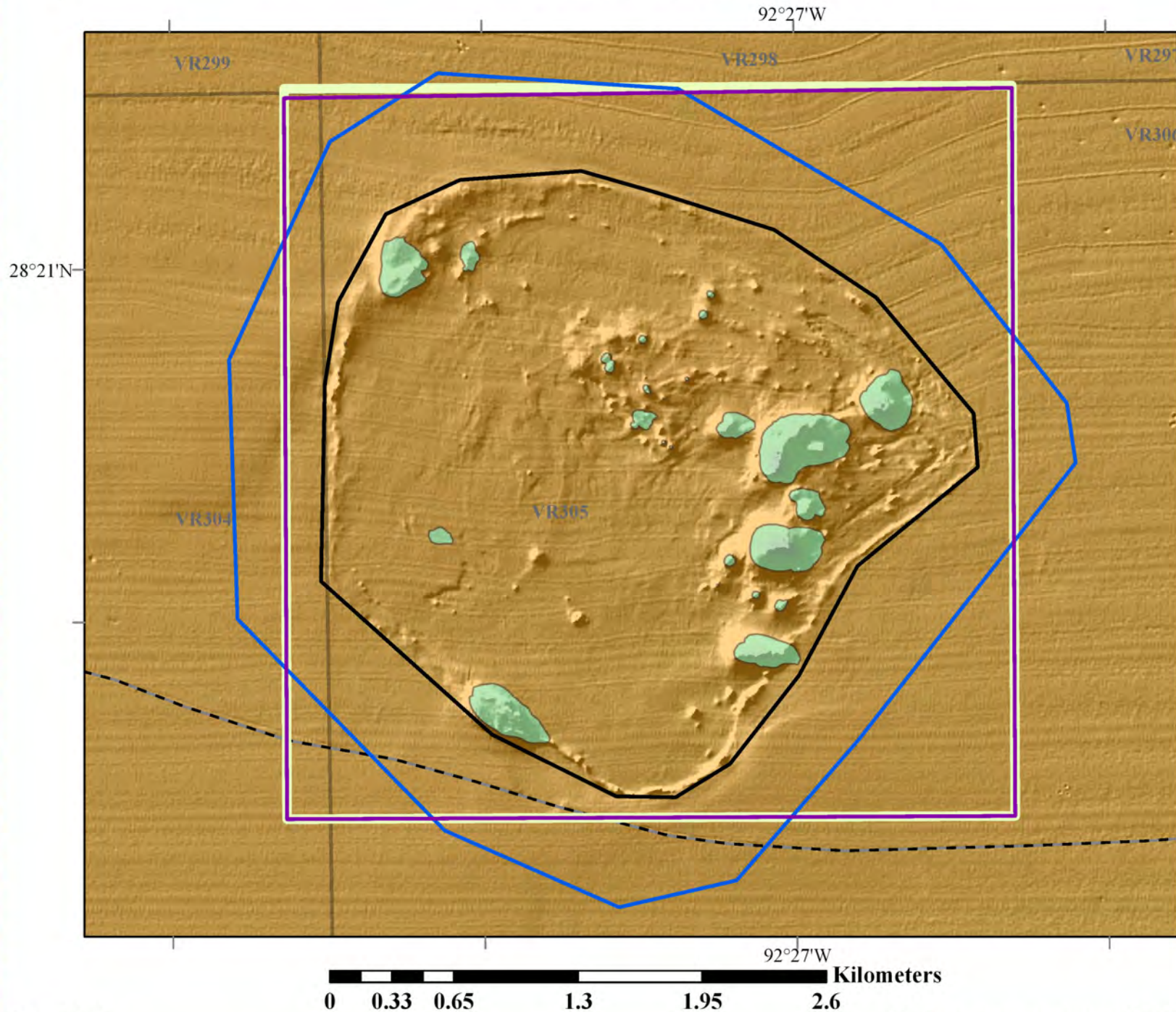
**LEGEND**

- ADVISORY COUNCIL
- FGB Alternatives**
  - Alt. 3
  - Alt. 2
- Gulf of Mexico Fisheries Management Council**
  - Habitat Area of Particular Concern
- Bureau of Ocean Energy Management**
  - Platform
  - Pipeline
  - No Activity Zone
  - Lease Blocks
  - Shipping Fairway
- Bathymetry**
  - High : 15m
  - Low : 473m





# FGBNMS Advisory Council Recommendation Sonnier Bank



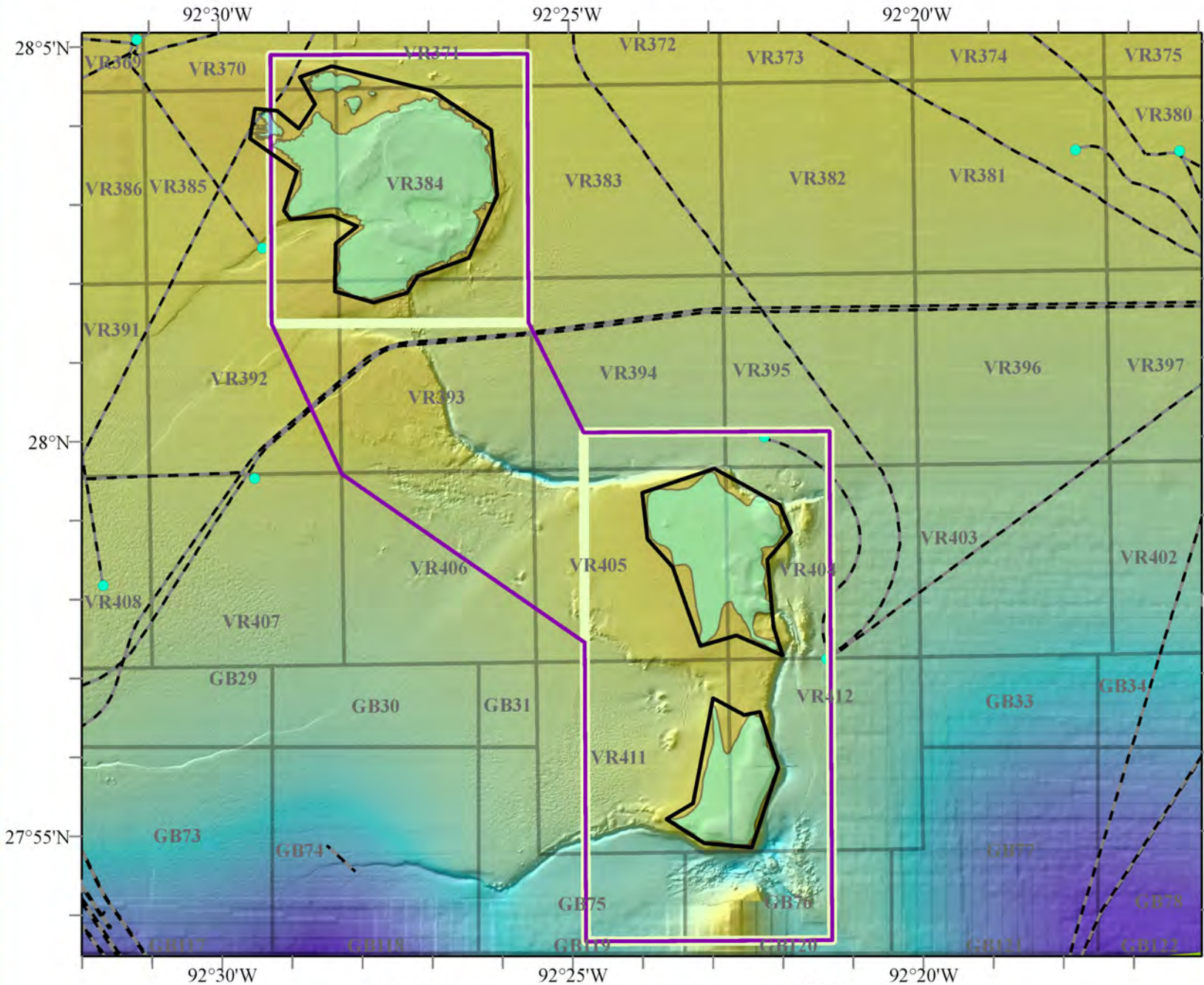
**LEGEND**

- ADVISORY COUNCIL
- FGB Alternatives
  - Alt. 3
  - Alt. 2
- Gulf of Mexico Fisheries Management Council
  - Habitat Area of Particular Concern
- Bureau of Ocean Energy Management
  - Pipeline
  - No Activity Zone
  - Lease Blocks
- Bathymetry
  - High : 15m
  - Low : 473m



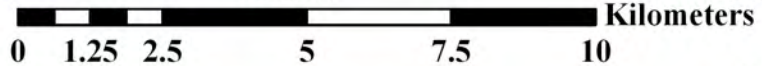


# FGBNMS Advisory Council Recommendation Bouma Complex



**LEGEND**

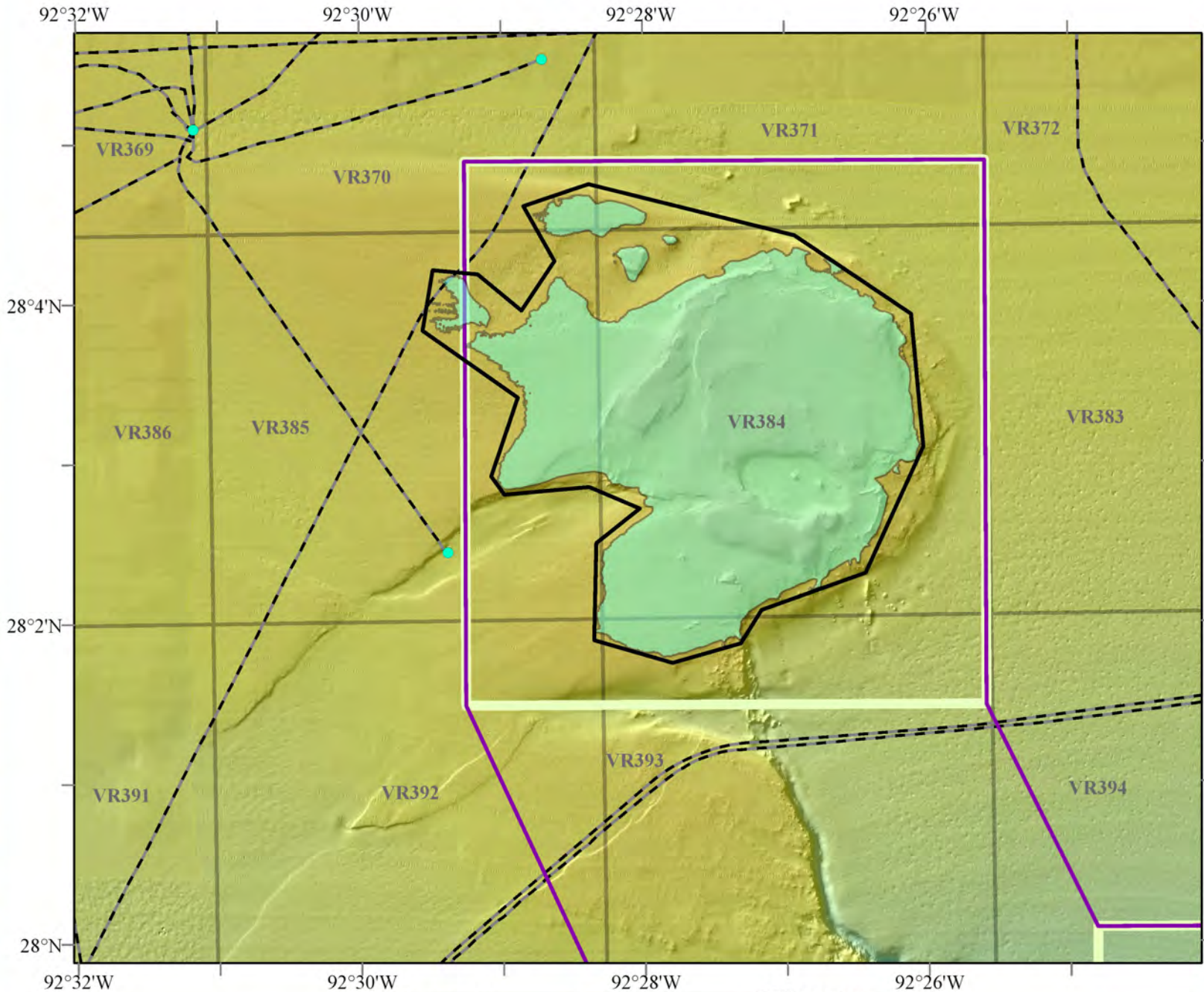
- ADVISORY COUNCIL
- FGB Alternatives**
- Alt. 3
- Gulf of Mexico Fisheries Management Council**
- Habitat Area of Particular Concern
- Bureau of Ocean Energy Management**
- Platform
- Pipeline
- No Activity Zone
- Lease Blocks
- Shipping Fairway
- Bathymetry**
- High : 15m
- Low : 473m





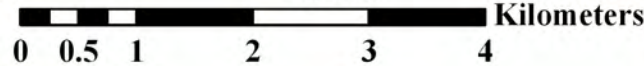
# FGBNMS Advisory Council Recommendation

## Bouma Bank



**LEGEND**

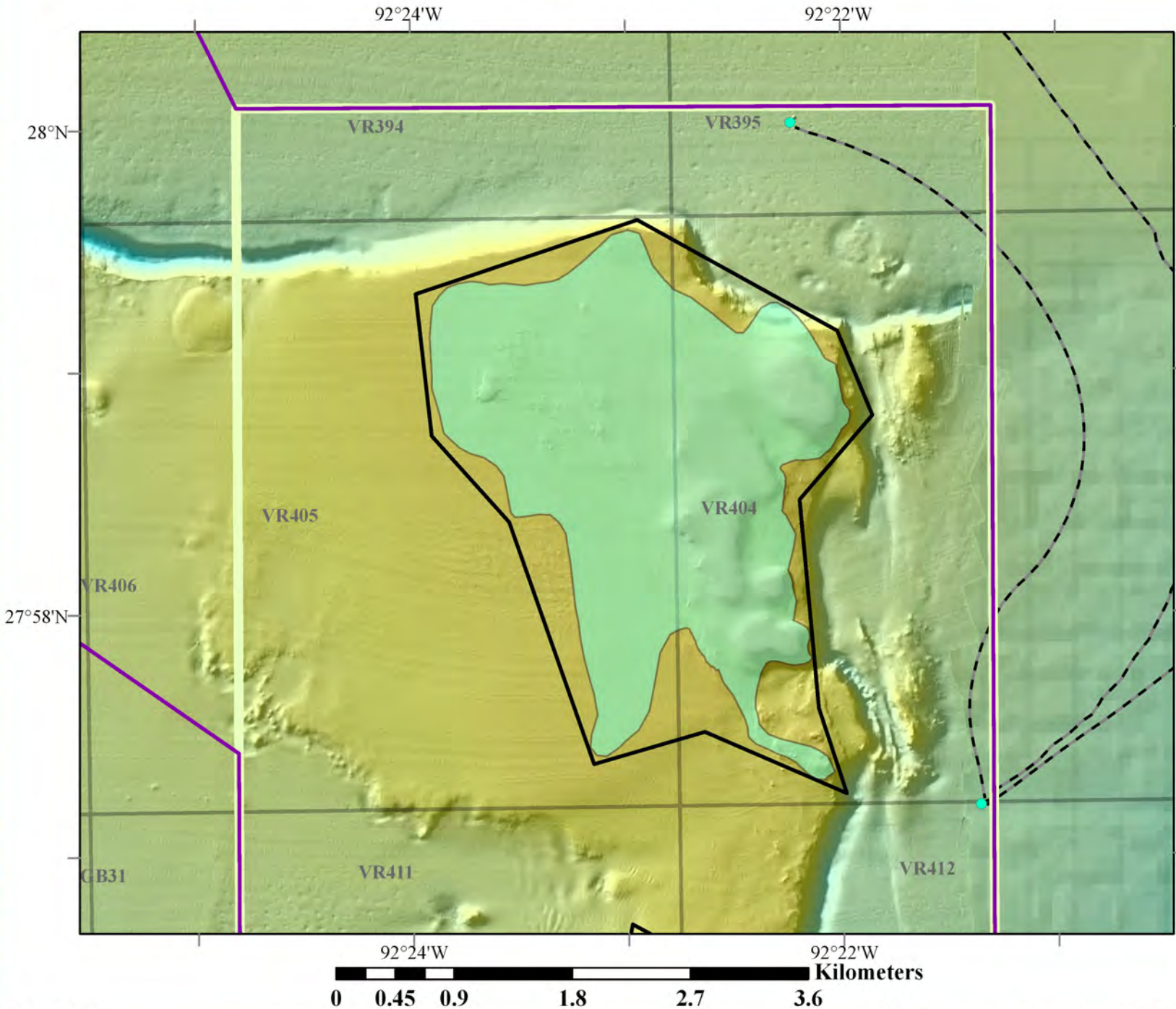
- ADVISORY COUNCIL
- FGB Alternatives**
- Alt. 3
- Gulf of Mexico Fisheries Management Council**
- Habitat Area of Particular Concern
- Bureau of Ocean Energy Management**
- Platform
- Pipeline
- No Activity Zone
- Lease Blocks
- Bathymetry**
- High : 15m
- Low : 473m





# FGBNMS Advisory Council Recommendation

## Rezak Bank



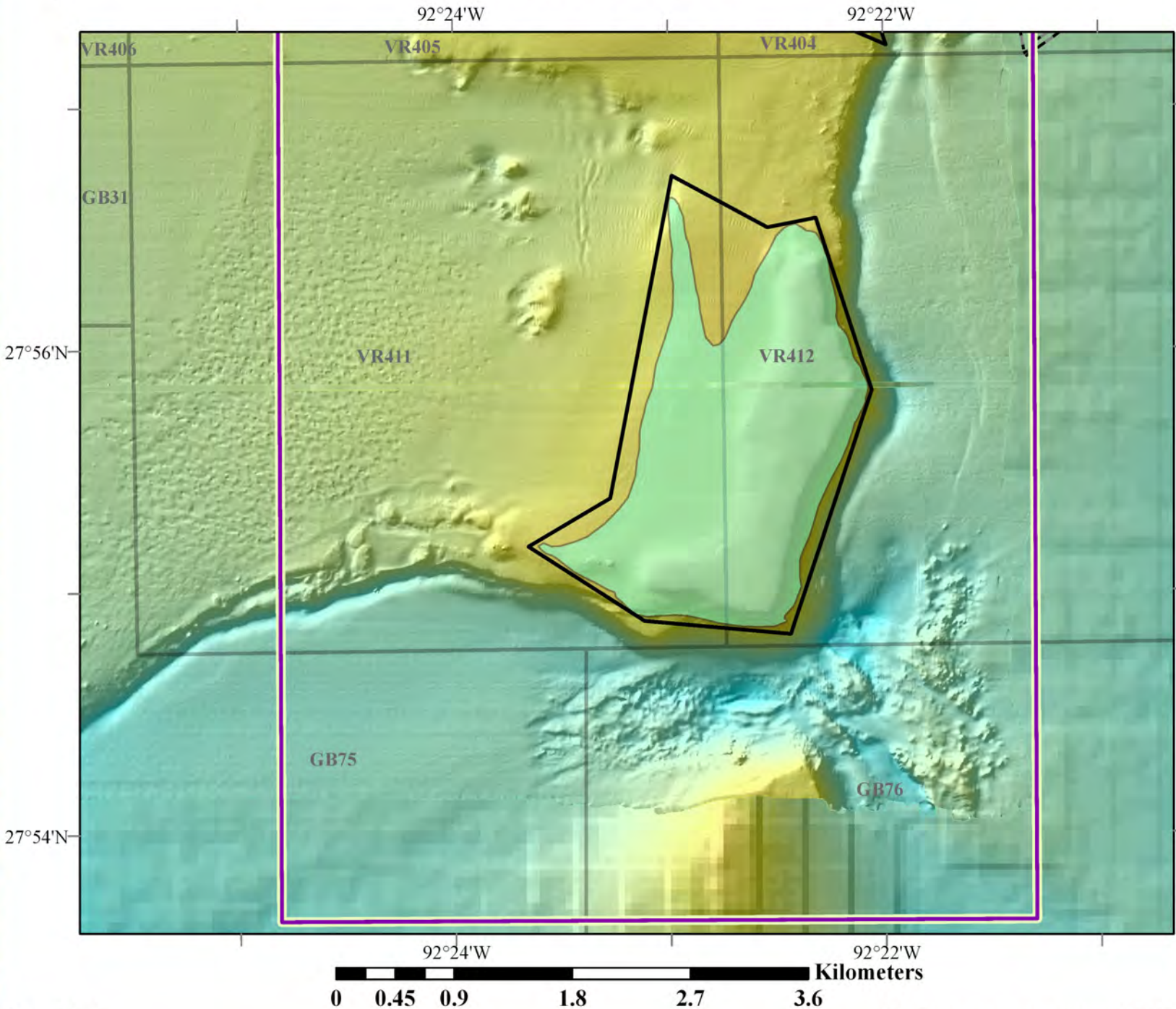
**LEGEND**

- ADVISORY COUNCIL
- FGB Alternatives**
- Alt. 3
- Gulf of Mexico Fisheries Management Council**
- Habitat Area of Particular Concern
- Bureau of Ocean Energy Management**
- Platform
- Pipeline
- No Activity Zone
- Lease Blocks
- Bathymetry**
- High : 15m
- Low : 473m



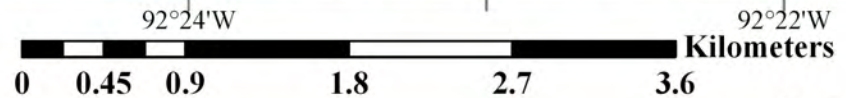


# FGBNMS Advisory Council Recommendation Sidner Bank



**LEGEND**

- ADVISORY COUNCIL
- FGB Alternatives
  - Alt. 3
- Gulf of Mexico Fisheries Management Council
  - Habitat Area of Particular Concern
- Bureau of Ocean Energy Management
  - Pipeline
  - No Activity Zone
  - Lease Blocks
- Bathymetry
  - High : 15m
  - Low : 473m





# FGBNMS Advisory Council Recommendation Alderdice Bank



92°2'W

92°W

91°58'W

28°6'N

SM170

SM171

SM172

28°4'N

SM179

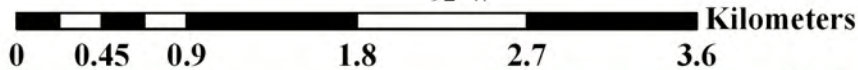
SM178

SM177

92°2'W

92°W

91°58'W



## LEGEND

ADVISORY COUNCIL

### FGB Alternatives

Alt. 3

Alt. 2

### Gulf of Mexico Fisheries Management Council

Habitat Area of Particular  
Concern

### Bureau of Ocean Energy Management

Pipeline

No Activity Zone

Lease Blocks

### Bathymetry

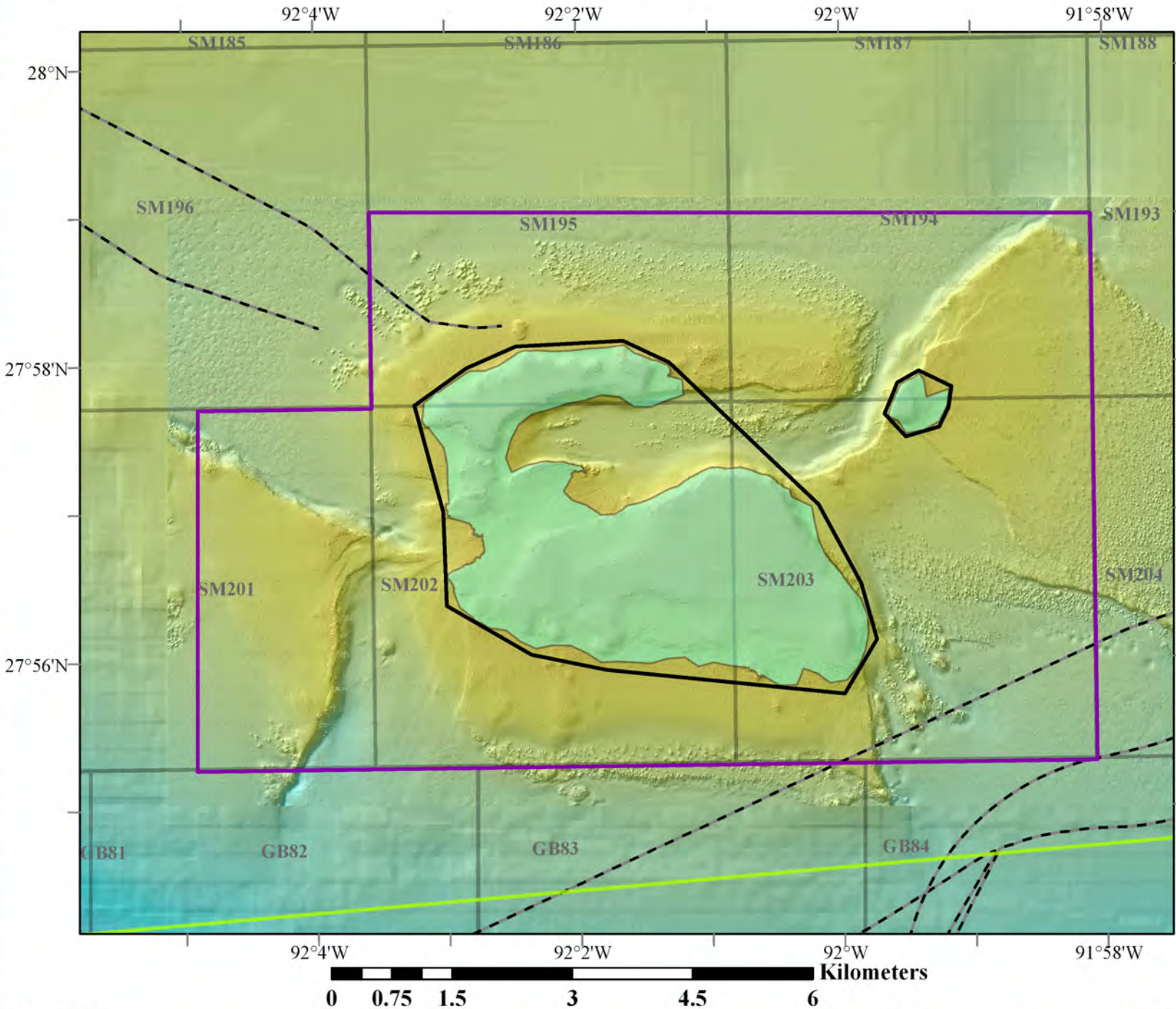
High : 15m

Low : 473m



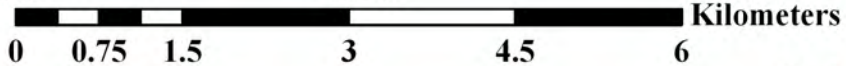


# FGBNMS Advisory Council Recommendation Parker Bank



**LEGEND**

- ADVISORY COUNCIL
- FGB Alternatives**
- Alt. 3
- Bureau of Ocean Energy Management**
- Pipeline
- No Activity Zone
- Lease Blocks
- Shipping Fairway
- Bathymetry**
- High : 15m
- Low : 473m





## **SAC's Regulatory Recommendations for Expansion Areas**

### **Fishing**

- 1) Include all fishing regulatory recommendations of the Gulf of Mexico Fishery Management Council (GMFMC) for all expansion areas, as contained in the letter dated November 8, 2016. (Attachment of document).
- 2) Recommendation that the weak link environmental safeguard be mandatory for anchors within the boundaries of any Coral HAPC or FGBNMS.
- 3) Include regulations that allow free-diving spearfishing at all new banks, but not the three current and expanded bank areas of the present FGBNMS. There shall also be no take of reef fish by spearfish equipment and there shall be no possession of any reef fish on board the vessel, when in possession of a speargun in the new areas of the FGBNMS. SCUBA tanks are prohibited on board a freedive spearfishing vessel.
- 4) Exemption to current regulations: possession of speargun (stowed and not available for immediate use) on board a vessel while within the boundaries of the existing FGBNMS is allowed, but the vessel may not be in possession of any fish species (with the exception of bait fish).  
  
i.e. (Prohibit possession of any fish species if in possession of a speargun within the existing FGBNMS.)
- 5) To recommend that, prior to the development of a final EIS of the FGBNMS Expansion, the FGBNMS present the modified boundaries under consideration to the Gulf Council and the Gulf Council be given the opportunity to provide recommendations of fishing regulations in these modified boundaries.

### **Oil & Gas**

- 1) Continue to allow seismic surveying acquisition inside the boundaries of the new bank expansion areas, adopting the BOEM & BSEE regulations for these activities.
- 2) Continue to allow BOEM oil & gas leasing of the areas inside the boundaries of the new bank expansion areas.
- 3) Continue with the existing regulations regarding pipelines inside the boundaries of the new bank expansion areas.



For more information on the Proposed Sanctuary Expansion, please visit  
<https://flowergarden.noaa.gov/management/expansiondeis.html>