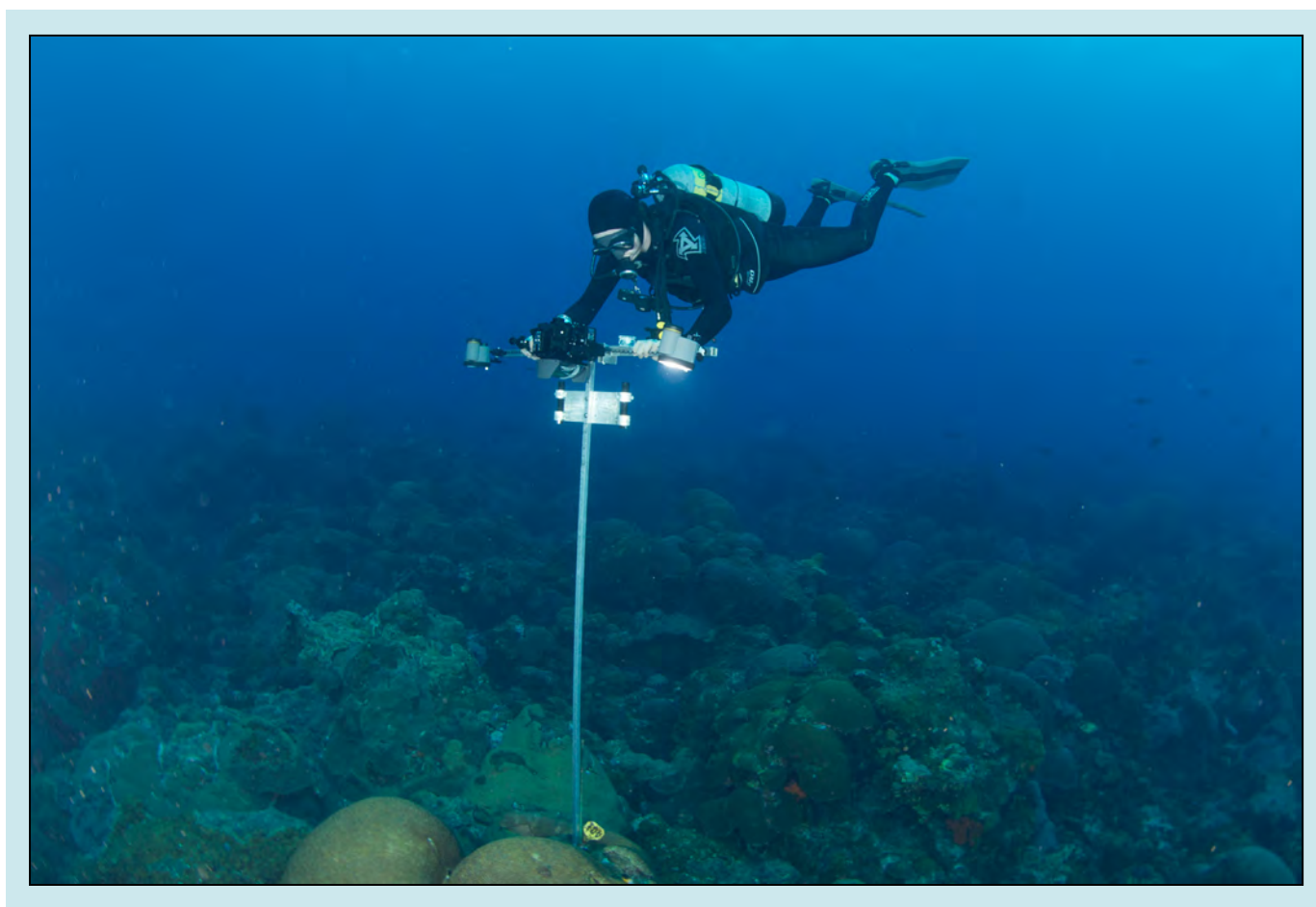


# Long-Term Monitoring at East and West Flower Garden Banks: 2013 Annual Report



December 2014



**Suggested Citation:**

Johnston, M.A., Nuttall, M.F. Eckert, R.J. Embesi, J.A. 2014. Long-Term Monitoring at East and West Flower Garden Banks National Marine Sanctuary: 2013 Annual Report. U.S. Department of Commerce, National Oceanic and Atmospheric Administration, Flower Garden Banks National Marine Sanctuary, Galveston, TX. 59 pp.

**Cover Photo:**

NOAA diver, Ryan Eckert, photographing a repetitive quadrat photostation at the East Flower Garden Bank. Credit: NOAA FGBNMS/GP Schmahl

National Oceanic and  
Atmospheric Administration

U.S. Secretary of Commerce  
Penny Pritzker

Under Secretary of Commerce for Oceans  
and Atmosphere and NOAA Administrator  
Kathryn Sullivan, Ph.D.

Assistant Administrator  
National Ocean Service  
Russell Callender, Ph.D.

Office of National Marine Sanctuaries  
Daniel J. Basta, Director

Flower Garden Banks National Marine Sanctuary  
George P. Schmahl, Superintendent

**Report Preparation:**

Michelle A. Johnston, Marissa F. Nuttall, Ryan J. Eckert,  
and John A. Embesi, Flower Garden Banks National  
Marine Sanctuary, Galveston, TX

**Report Editors:**

Emma L. Hickerson and George P. Schmahl, Flower  
Garden Banks National Marine Sanctuary, Galveston, TX  
Matthew W. Johnson, Bureau of Ocean Energy  
Management, New Orleans, LA



# Table of Contents

<b>Acknowledgments .....</b>	<b>iii</b>
<b>Executive Summary .....</b>	<b>iv</b>
<b>Chapter 1: Long-Term Monitoring at East and West Flower Garden Banks .....</b>	<b>1</b>
Long-Term Monitoring Introduction.....	2
Long-Term Monitoring Study Sites .....	4
<b>Chapter 2: Random Transects .....</b>	<b>11</b>
Random Transect Introduction.....	12
Random Transect Methods.....	12
<i>Random Transect Field Methods.....</i>	<i>12</i>
<i>Random Transect Data Processing.....</i>	<i>13</i>
<i>Random Transect Analysis .....</i>	<i>13</i>
Random Transect Results.....	14
<i>Random Transect Mean Percent Cover .....</i>	<i>14</i>
<i>Random Transect Long-Term Trends .....</i>	<i>16</i>
Random Transect Discussion .....	18
<b>Chapter 3: Repetitive Quadrat Photostations.....</b>	<b>21</b>
Repetitive Quadrat Photostation Introduction .....	22
Repetitive Quadrat Photostation Methods .....	22
<i>Repetitive Quadrat Photostation Field Methods.....</i>	<i>22</i>
<i>Repetitive Quadrat Photostation Data Processing.....</i>	<i>23</i>
<i>Repetitive Quadrat Photostation Analysis .....</i>	<i>23</i>
Repetitive Quadrat Photostation Results .....	23
<i>Repetitive Quadrat Photostation Mean Percent Cover .....</i>	<i>23</i>
<i>Repetitive Quadrat Photostation Long-Term Trends .....</i>	<i>24</i>
Repetitive Quadrat Photostation Discussion .....	26
<b>Chapter 4: Repetitive Deep Photostations.....</b>	<b>29</b>
Repetitive Deep Photostation Introduction .....	30
Repetitive Deep Photostation Methods .....	30
<i>Repetitive Deep Photostation Field Methods.....</i>	<i>30</i>
<i>Repetitive Deep Photostation Data Processing.....</i>	<i>31</i>
<i>Repetitive Deep Photostation Analysis .....</i>	<i>31</i>
Repetitive Deep Photostation Results .....	31
<i>Repetitive Deep Photostation Mean Percent Cover .....</i>	<i>31</i>
<i>Repetitive Deep Photostation and Repetitive Quadrat Shallow Station Comparison.....</i>	<i>33</i>



*Repetitive Deep Photostation Long-Term Trends* ..... 34  
**Repetitive Deep Photostation Discussion** ..... 35

**Chapter 5: Fish Surveys** ..... 37

**Fish Surveys Introduction**..... 38  
**Fish Surveys Methods**..... 38  
*Fish Surveys Field Methods*..... 38  
*Fish Surveys Data Processing*..... 39  
*Fish Surveys Analysis* ..... 39  
**Fish Surveys Results** ..... 40  
*Sighting Frequency and Occurrence* ..... 41  
*Species Density*..... 42  
*Trophic Group Analysis*..... 42  
*Biomass Analysis*..... 43  
*Abundance-Biomass Curves* ..... 46  
*Family Level Analysis*..... 47  
**Fish Surveys Discussion** ..... 51

**Chapter 6: Conclusions** ..... 53

**References**..... 55



## Acknowledgments

*We thank the individuals, listed below, who contributed their time and expertise to make this long-term monitoring effort successful. We are grateful to NOAA and BOEM staff for their invaluable institutional knowledge. In particular, we acknowledge James Sinclair, Michelle Nannen, Greg Boland, and Matthew Johnson for their support and dedication to this project.*

### **2013 PROJECT DIVERS**

*Ryan Eckert*

*John Embesi*

*Emma Hickerson*

*Michelle Johnston*

*Kaitlin McGraw*

*Marissa Nuttall*

*Doug Peter*

*Randy Rudd*

*G.P. Schmahl*

*James Sinclair*

*Scott Sorsett*

*Amanda Sterne*

*Matt Stout*

### **2013 R/V MANTA CREW**

*Jeremy Fox*

*Julie O'Hern*

*Mike Petry*

*Mike Shetler*

*Tina Thompson*

## EXECUTIVE SUMMARY

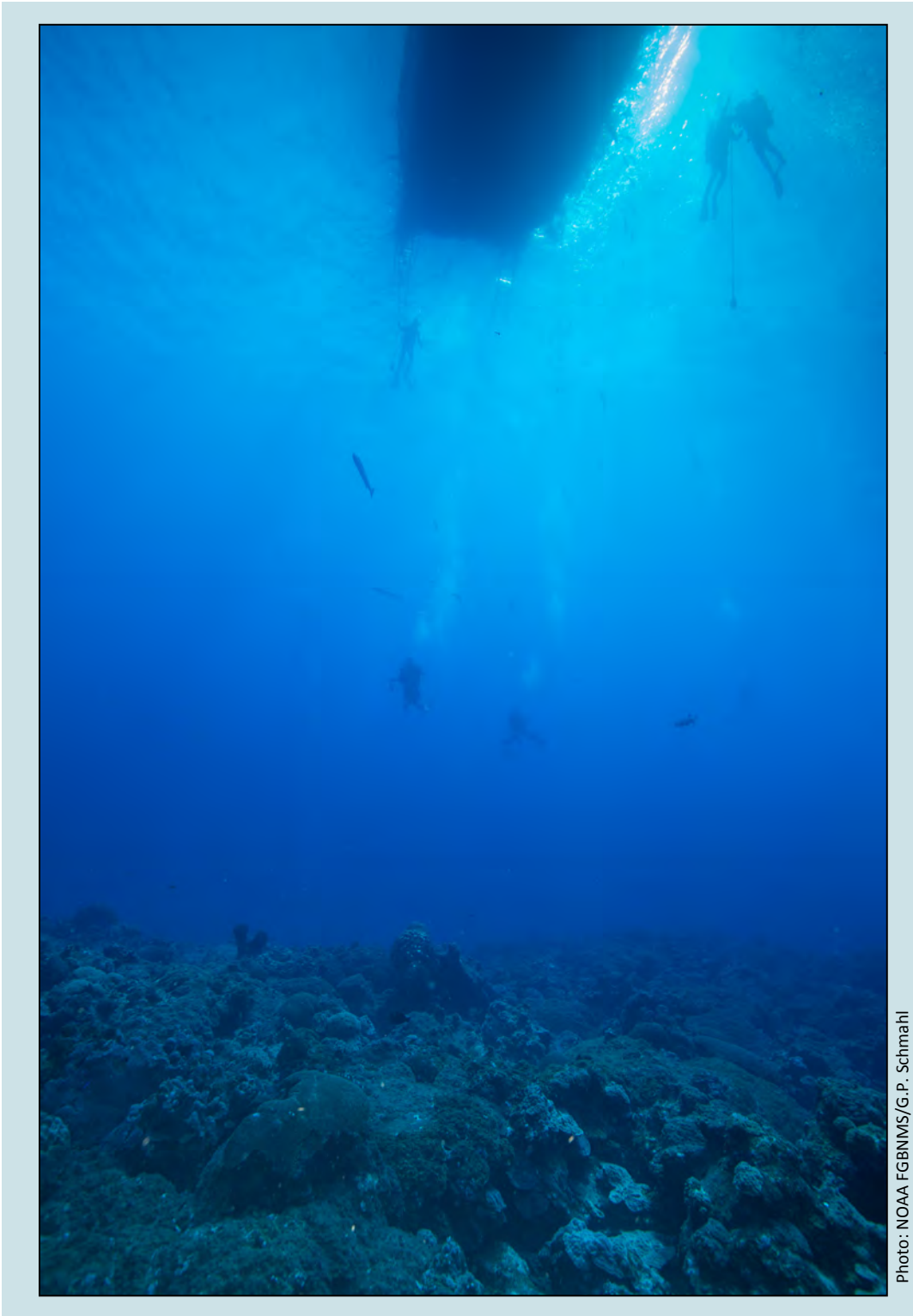


Photo: NOAA FGBNMS/G.P. Schmahl

Divers hover over the coral reef at East Flower Garden Bank.

*In over 25 years of continuous monitoring, the coral reefs of East and West Flower Garden Banks (EFGB and WFGB) have maintained levels of coral cover above 50% and have suffered minimally from hurricanes, coral bleaching, and disease, supporting relatively diverse and abundant fish populations in the northwestern Gulf of Mexico.*

*This report summarizes fish and benthic community observations from 2013 as part of the annual long-term monitoring program jointly funded by NOAA's Flower Garden Banks National Marine Sanctuary and the Bureau of Ocean Energy Management. The benthic and fish community surveys were conducted by a team of multi-disciplinary scientists using random transects to document components of benthic cover, repetitive photostations to document changes in the composition of benthic assemblages in shallow and deep repetitive sites, and modified Bohnsack and Bannerot (1986) fish surveys to examine fish population composition within designated study sites at EFGB and WFGB.*

*Key findings from the 2013 monitoring period include:*

#### *Chapter 2: Random Transects*

- Benthic communities at EFGB and WFGB are dominated by coral, with approximately 60% mean coral cover for both banks.*
- *Orbicella franksi*, a threatened species as listed by the Endangered Species Act, is the principal component of mean percent coral cover at both banks (27%).*
- *Pseudodiploria strigosa* is the second most abundant species (9%).*
- Despite continued mean coral cover above 50 percent, macroalgae mean cover has been increasing since 1999.*

#### *Chapter 3: Repetitive Quadrat Photostations*

- Mean coral cover in the repetitive quadrat photostations is approximately 63% for both banks.*
- Similar to the random transects, the coral assemblages remained consistent at both banks, with the dominant corals being *Orbicella franksi* followed by *Pseudodiploria strigosa*.*
- Mean macroalgae cover shows an increasing trend since it was first measured at repetitive quadrat photostations in 2002.*
- Incidences of bleaching, paling, and fish biting are rare (ranging from 0.00–0.63% of area assessed), and there is little evidence of coral disease.*

#### *Chapter 4: Repetitive Deep Photostations*

- In the 32–40 m repetitive deep photostations, mean coral cover is 74%.*
- Dominant coral species composition changes slightly with depth, with *Orbicella franksi* and *Montastraea cavernosa* being the most abundant species in this depth range.*
- Mean macroalgae cover shows an increasing trend since it was first measured at the repetitive deep stations in 2003.*

*Chapter 5: Fish Surveys*

- *Pomacentridae (damelfish), Serranidae (groupers), and Labridae (wrasses and parrotfish) are the dominant fish families at both banks.*
- *The most abundant species include Brown Chromis (*Chromis multilineata*), closely followed by Atlantic Creolefish (*Paranthias furcifer*), Bluehead (*Thalassoma bifasciatum*), and Creole Wrasse (*Clepticus parrae*).*
- *Mean fish density (abundance per 100 m<sup>2</sup>) is highest at WFGB.*
- *Invertivores are the dominant fish guild, with Pomacentridae and Labridae representing the highest density.*
- *Mean fish biomass (200 g/m<sup>2</sup>) is highest at WFGB, with herbivores and piscivores possessing a similar biomass.*
- *First observed in 2011 at the FGB, lionfish (*Pterois volitans/miles*) were documented in the long-term monitoring dataset for the first time, with a sighting frequency of 16.7%, which ranks lionfish the 37<sup>th</sup> most frequently sighted species of 74.*

*Chapter 6: Conclusions*

- *The results are consistent with previous monitoring efforts of mean coral cover above 50% at the Flower Garden Banks, highlighting the coral stability at the study sites since the start of the monitoring program in 1988.*
- *The coral reef of the Flower Garden Banks continues to be healthy and stable compared to other reefs in the Caribbean, although macroalgae cover is increasing.*
- *The number of coral and fish species at EFGB and WFGB are lower than the most diverse areas of the Caribbean and western Atlantic; however, percent coral cover and fish abundance are much higher.*
- *Continued monitoring will document long-term changes in condition and will be useful for management decisions and future research focused on the dynamics of the robust benthic communities and the fish populations they support.*



---

## Chapter 1

# LONG-TERM MONITORING AT EAST AND WEST FLOWER GARDEN BANKS



Photo: NOAA FGBNMS/G.P. Schmahl

Creole wrasse swim over the reef in the East Flower Garden Bank long-term monitoring study site.

## Long-Term Monitoring Introduction

The coral reef-capped East and West Flower Garden Banks are part of a discontinuous arc of reef environments along the outer continental shelf in the northwestern Gulf of Mexico containing the northernmost coral reefs in North America (Bright et al. 1985; Rezak et al. 1985) (Figure 1.1). In the 1970s, because of concern about potential impacts of offshore oil and gas development, the Department of Interior (DOI) (initially through the Minerals Management Service, now the Bureau of Ocean Energy Management [BOEM]) started monitoring East and West Flower Garden Banks (EFGB and WFGB). The purpose was to establish baseline data and determine if these reefs were impacted by nearby oil and gas exploration and production activities (Figure 1.2).

In 1988, DOI officially established a long-term monitoring program to evaluate the potential ongoing impacts of oil and gas development to EFGB and WFGB. The long-term monitoring effort evaluates changes in living coral and benthic community cover, coral growth rates, reef fish population dynamics, water quality, and other indices of reef vitality within designated 10,000 m<sup>2</sup> study sites on the coral reef of EFGB and WFGB.

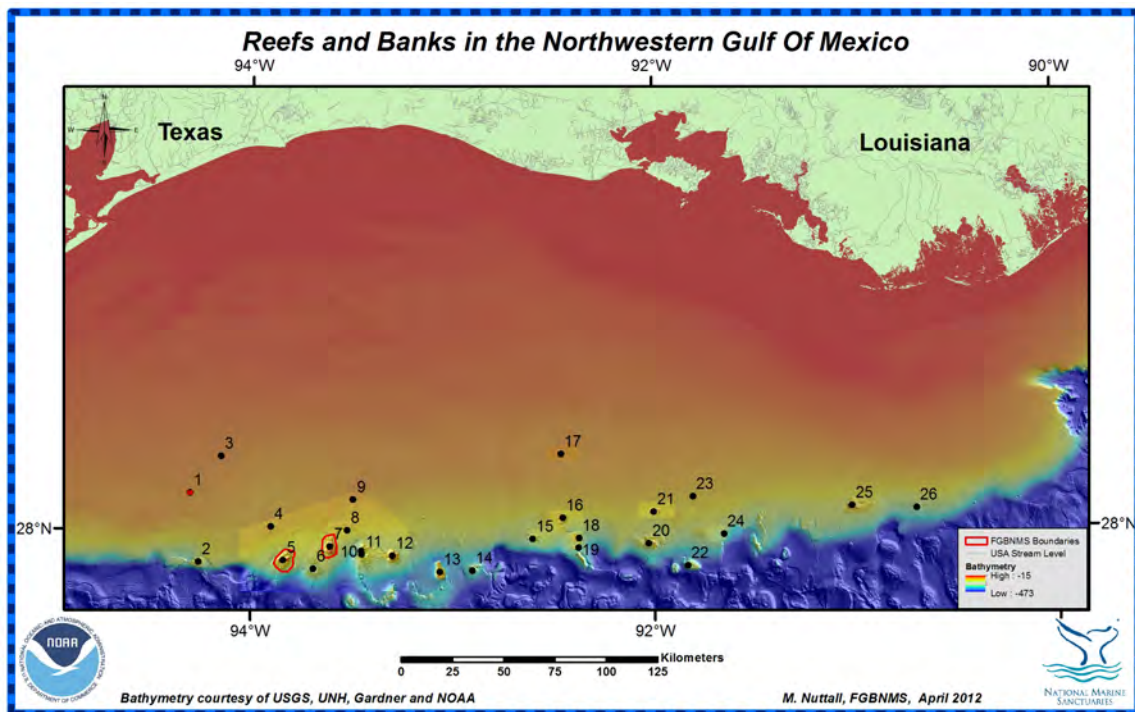


Figure 1.1. Map of EFGB, WFGB, and Stetson Bank (outlined in red) in relation to the Texas-Louisiana continental shelf and other topographic features of the northwestern Gulf of Mexico.

1. Stetson Bank, 2. Applebaum Bank, 3. Claypile Bank, 4. Coffee Lump Bank, 5. West Flower Garden Bank, 6. Horseshoe Bank, 7. East Flower Garden Bank, 8. MacNeil Bank, 9. 29 Fathom Bank, 10. Rankin Bank, 11. 28 Fathom Bank, 12. Bright Bank, 13. Geyer Bank, 14. Elvers Bank, 15. McGrail Bank, 16. Bouma Bank, 17. Sonnier Bank, 18. Rezak Bank, 19. Sidner Bank, 20. Parker Bank, 21. Alderdice Bank, 22. Sweet Bank, 23. Fishnet Bank, 24. Jakkula Bank, 25. Ewing Bank, 26. Diaphus Bank.

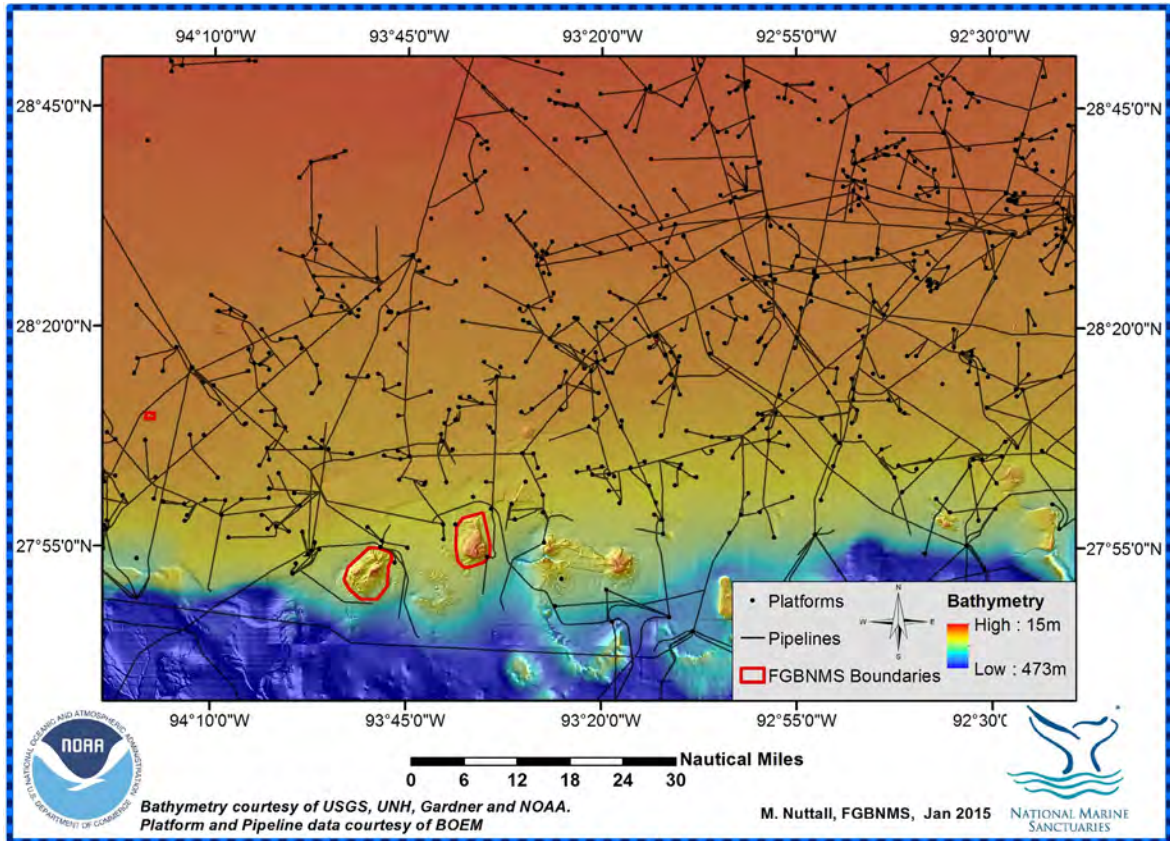


Figure 1.2. Map of oil and gas platforms and pipelines near EFGB, WFGB, and surrounding banks.

Though many coral reefs in the western Atlantic and Caribbean region have experienced significant declines in coral cover, the reefs of EFGB and WFGB, which are part of Flower Garden Banks National Marine Sanctuary (FGBNMS), support healthy coral and fish assemblages (Johnston et al. 2013; Clark et al. 2014). Administered through an interagency agreement, the monitoring program is important to both NOAA and BOEM, who share the responsibility of protecting and monitoring these important marine resources.

EFGB and WFGB are located roughly 190 km offshore and at a depth of at least 17 m. Total depth at EFGB ranges from 17–134 m, and 18–140 m at WFGB. All monitoring at both banks was conducted within the coral reef zone (Schmahl et al. 2008), which is the shallowest portion of the reef known as “the reef cap.” While abundant, coral species diversity at both banks is low; 31 species from 18 genera are represented, compared to 67 species found on some Caribbean reefs (Goreau and Wells 1967; Schmahl et al. 2008).

## Long-Term Monitoring Study Sites

The monitoring effort was conducted from the NOAA *R/V Manta* during the month of August in 2013. Data was collected within 10,000 m<sup>2</sup> (100 x 100 m or 1 hectare) study sites (hereafter referred to as “study sites”) located on the shallow reef cap at the Flower Garden Banks (FGB), and in deeper sites (40 m) located outside the study sites.

Established in 1988, the approximate centers of the study sites are marked by permanent mooring buoys: FGBNMS permanent mooring #2 at EFGB and mooring #5 at WFGB (Table 1.1; Figure 1.3 and 1.4). Within the locations of the study sites, depths ranged between 17–27m at EFGB, and 18–25 m at WFGB.

Table 1.1. Coordinates and depths for the study site permanent moorings.

Study Site Mooring Buoy Locations			
Mooring	Lat (DMD)	Long (DMD)	Depth (m)
EFGB Mooring #2	27 54.516	93 35.831	19.2
WFGB Mooring #5	27 52.501	93 48.918	20.7

The benthic community was examined along random 10 m transects and in stationary repetitive photostations. Fish surveys were conducted at randomly located points within the study sites. Within each study site at EFGB and WFGB, stationary repetitive photostations were established at the beginning of the monitoring program in 1988. The centers of these repetitive quadrat photostations are marked by 0.5 m tall rods or eyebolts. Historically, 40 repetitive quadrat photostations have been maintained over time at each bank.

Eleven repetitive deep photostations are located outside the study site at the EFGB. The deep photostations were established in April 2003 for comparison with the shallower repetitive photostations already in place, and are located east of the EFGB study site at depths between 32–40 m (Figure 1.5).

Twelve repetitive deep photostations are located outside the study site at WFGB. These deep photostations were established in 2012 for comparison with EFGB deep photostations and the shallower repetitive quadrat photostations already in place. The stations were located 78 m north of the WFGB mooring buoy #2 at depths between 24–38 m (Figure 1.6).

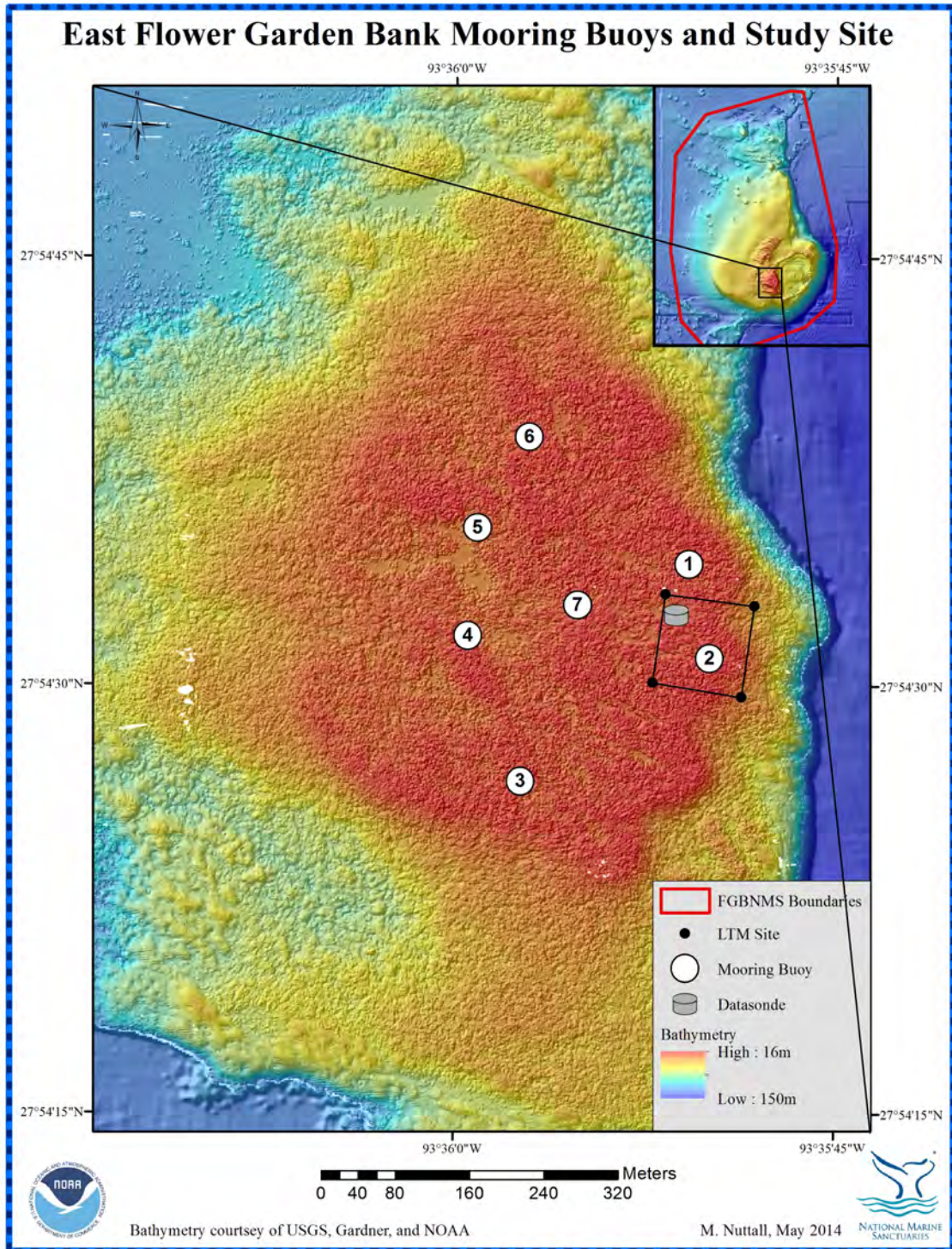


Figure 1.3. Bathymetric map of EFGB with long-term monitoring study site (LTM site), mooring buoy, and datasonde locations.

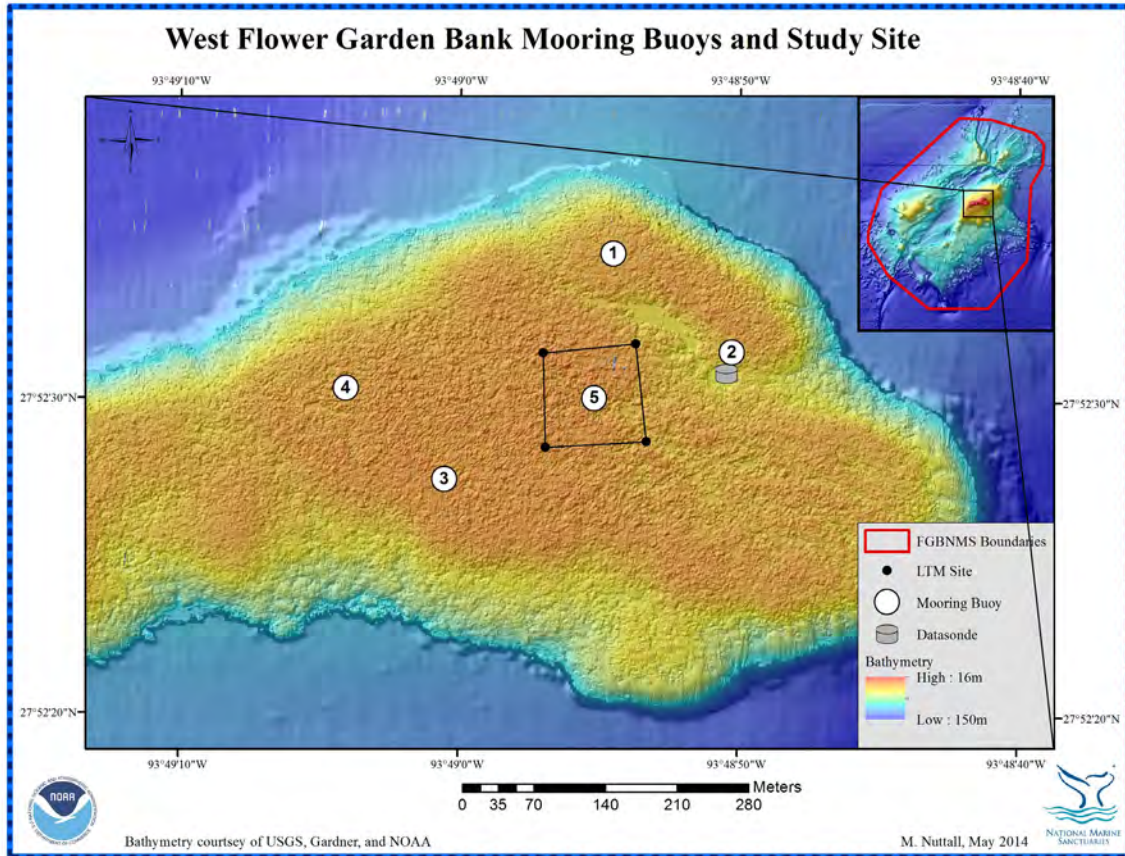


Figure 1.4. Bathymetric map of WFGB with long-term monitoring study site (LTM site), mooring buoy, and datasonde locations.

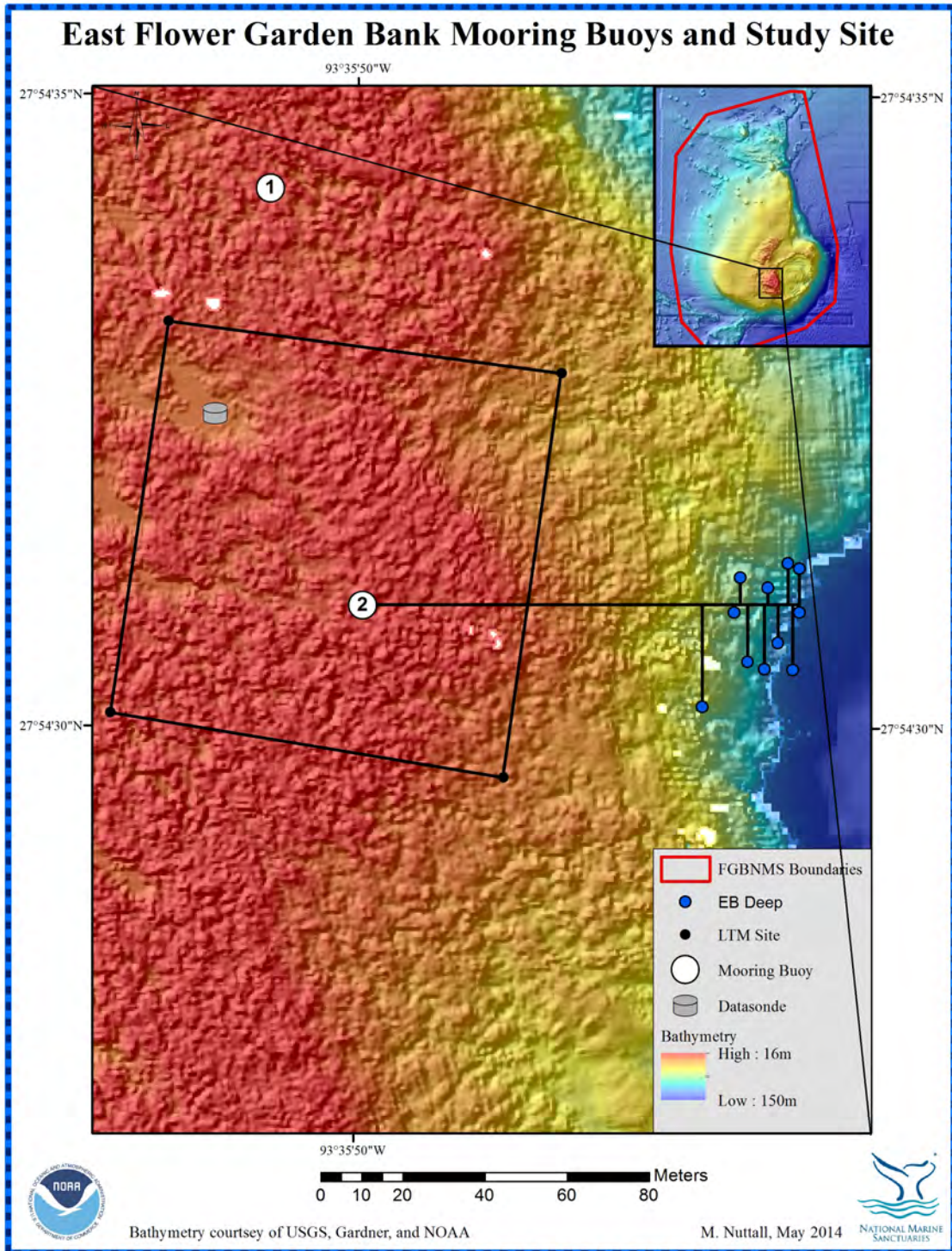


Figure 1.5. Bathymetric map of EFGB with long-term monitoring study site (LTM site), mooring buoy, and repetitive deep photostation locations (EB Deep).

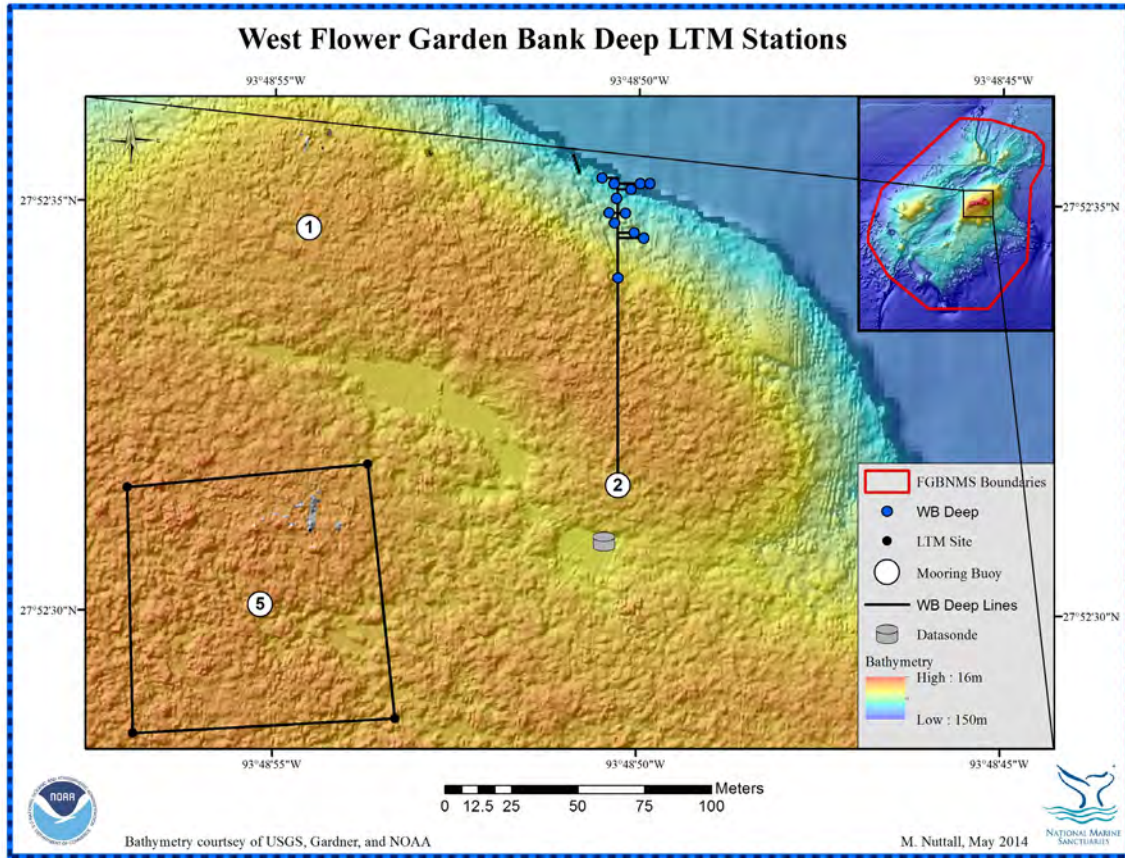


Figure 1.6. Bathymetric map of WFGB with long-term monitoring study site (LTM site), mooring buoy, and repetitive deep photostation locations (WB Deep).



For multi-year long-term monitoring reports (Rezak et al. 1985; Gittings et al. 1992; CSA 1996; Dokken et al. 1999, 2003; Precht et al. 2006; Zimmer et al. 2010; Johnston et al. 2013; Johnston et al. 2015 in review), the following techniques listed below are used to evaluate coral reef diversity, growth rates, and coral reef community health:

- Thirty-two random photographic transects 10 m in length are analyzed to evaluate parameters of the coral community.
- Eighty repetitive photostations and twenty-three repetitive deep photostations are maintained to detect and evaluate long-term changes at the stations and in individual coral colonies. Planimetry is used to measure percent change in area of living tissue of selected coral colonies.
- Sixty permanent stations for monitoring marginal growth rates of *Psuedodiploria strigosa* is conducted using comparisons of repetitive close-up photographs of coral margins.
- Eight cores of *Orbicella faveolata* colonies are taken during the third year of four-year monitoring periods. All cores are sectioned and x-rayed to measure accretionary growth rates
- Two videotaped 100 m transects are conducted at each study site to document the general conditions of reef health.
- Forty-eight fish counts are conducted using a modified Bohnsack & Bannerot (1986) technique for quantitatively assessing community structure of coral reef fishes.
- *Diadema antillarum* (long spined sea urchin) surveys are conducted to establish current population levels as a basis for comparison with future observations.
- One Sea-Bird Electronics, Inc. (SBE) 37-SMP MicroCAT water quality instrument is stationed on each bank to record salinity, temperature, and depth. Quarterly water sampling is conducted at both banks to test for chl *a*, ammonia, nitrate, nitrite, TKN, and phosphorous.

For the purposes of one-year annual reports, random transects, repetitive photostations, and fish surveys will be evaluated and discussed. Multi-year monitoring reports from previous long-term monitoring periods can be referenced for detailed methods, additional techniques and analyses, and historical data (Rezak et al. 1985; Gittings et al. 1992; CSA 1996; Dokken et al. 1999, 2003; Precht et al. 2006; Zimmer et al. 2010; Johnston et al. 2013; Johnston et al. 2015 in review).

---

## Chapter 2

---

### RANDOM TRANSECTS

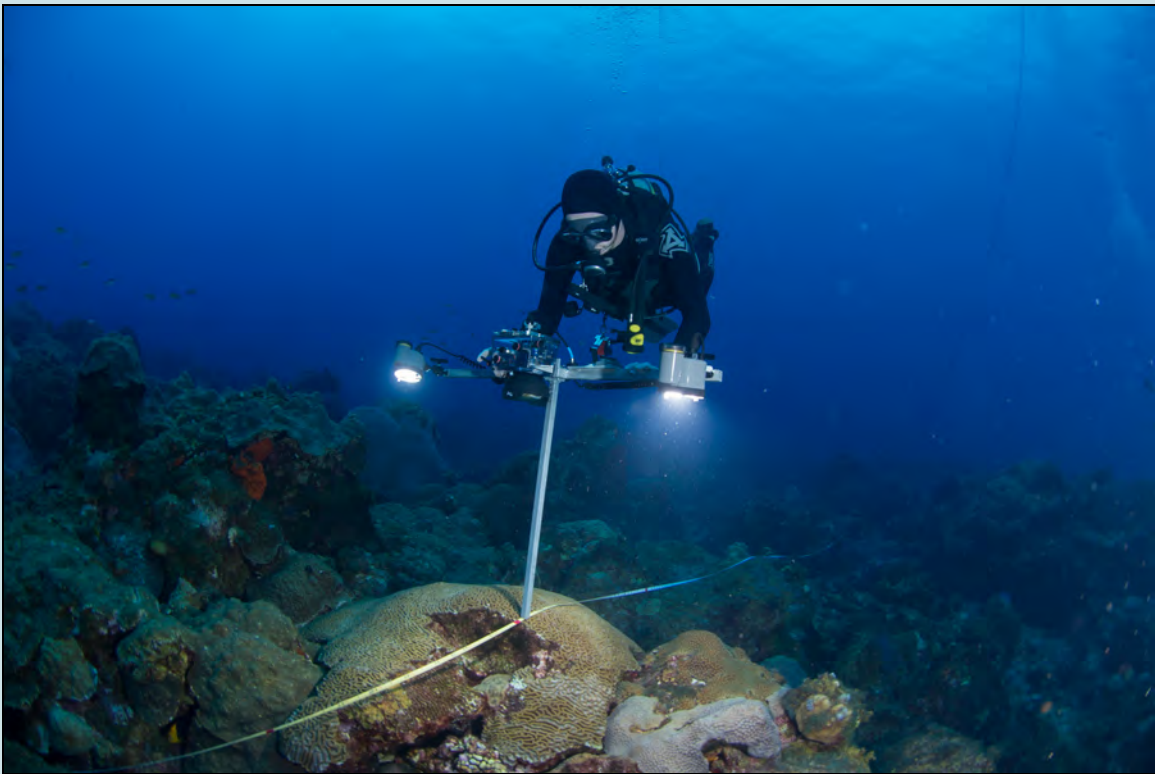


Photo: NOAA FGBNMS/G.P. Schmahl

NOAA diver, Ryan Eckert, with camera and strobes mounted on aluminum t-frame taking random transect photographs at East Flower Garden Bank.

## Random Transect Introduction

To estimate the areal coverage of benthic components such as corals, sponges, and macroalgae, photographs along 10 m transect tapes were taken randomly within each study site. Conducted at random locations, the transect surveys were used to compare habitat between banks and provide information to document the benthic reef community of EFGB and WFGB in 2013.

## Random Transect Methods

### *Random Transect Field Methods*

Four random transects within each quadrant of both study sites, totaling 16 transects per bank, were completed. Each transect captures approximately 8 m<sup>2</sup> of benthic habitat. A Canon Power Shot<sup>®</sup> G11 digital camera in an Ikelite<sup>®</sup> housing and 28 mm equivalent wet mount lens adaptor, mounted on a 0.65 m t-frame with bubble level and two Inon<sup>®</sup> Z240 strobes, was used to capture non-overlapping images above the reef (Figure 2.1).



Photo: NOAA FGBNMS/G.P. Schmahl

Figure 2.1. A camera and strobes are mounted on an aluminum t-frame to take random transect photos.

A bubble level mounted to the t-frame center ensured images were taken in a vertical orientation to standardize the area captured. The mounted camera was placed at intervals marked on a spooled, fiberglass, measuring tape at 55.88 cm apart producing 19 non-

overlapping images along the 10 m transect. Each still frame image captured an 80 x 55 cm area. This produced a total photographed area of 8.36 m<sup>2</sup> per transect, or a minimum of 117.04 m<sup>2</sup> photographed per study site per year (for more detailed methods, see Johnston et al. 2013).

### *Random Transect Data Processing*

Mean percent cover in the random transect images was analyzed using Coral Point Count with Microsoft<sup>®</sup> Excel<sup>®</sup> extensions (CPCe) (Kohler and Gill 2006). CPCe outputs included parameters of each species/substrate type (mean, standard deviation, standard error) and the calculation of the Shannon–Weaver diversity index for each species.

A total of 500 points was distributed evenly among all photos within a transect. Points were randomly overlaid on each image and benthic species lying under these points were identified. Organisms positioned beneath each random dot were identified as follows: corals, sponges, and macroalgae were identified to lowest possible taxonomic group (macroalgae included algae longer than approximately 3 mm and included thick algal turfs); and crustose coralline algae, fine turfs, and bare rock were grouped as “CTB” (Aronson and Precht 2000). Additional categories included other live components (ascidians, fish, serpulids, etc.), sand, rubble, and unknown. The coverages of coral bleaching, paling, concentrated and isolated fish biting, and disease were also recorded.

### *Random Transect Analysis*

Based on benthic mean percent cover, comparisons in community differences between the banks were made using nonparametric analysis for non-normal data with Primer<sup>®</sup> version 6.0. Data were square root transformed to ecological distance via Bray-Curtis similarity matrices (Bray and Curtis 1957). Significant dissimilarities were tested using analysis of similarity (ANOSIM). Cluster analyses were performed on similarity matrices, with similarity profile (SIMPROF) tests, to identify significant ( $\alpha=0.05$ ) clusters within the data. Multidimensional scaling (MDS) (Kruskal 1964) was used to visualize community dissimilarities between habitat types. Ordinations were run using 100 random starting configurations to determine the best fit model and minimize stress. Species contributing to the observed dissimilarities were identified using SIMPER. The R statistic, typically ranging between 0 and 1, indicates between and within group dissimilarities, where small R values (<0.3) indicate that similarities between sites and within sites are the same (Clarke & Warwick 2001).

Diversity indices including species richness, Margalef’s species richness ( $d$ ), Pielou’s evenness ( $J'$ ), and Shannon diversity ( $H'$ ) were calculated to make comparisons between banks based on benthic diversity. For long-term trends (1994–2013), each functional group sample was averaged by year and compared using nonparametric analysis for non-normal data. MDS (Kruskal 1964) was used to visualize community dissimilarities between years, with time series trajectory to highlight community shifts over time.

## Random Transect Results

### *Random Transect Mean Percent Cover*

The major benthic components of the 2013 random transects were coral cover (60%), followed by macroalgae cover (29%), CTB (9%), sponge cover (0.5%) (Figure 2.2).

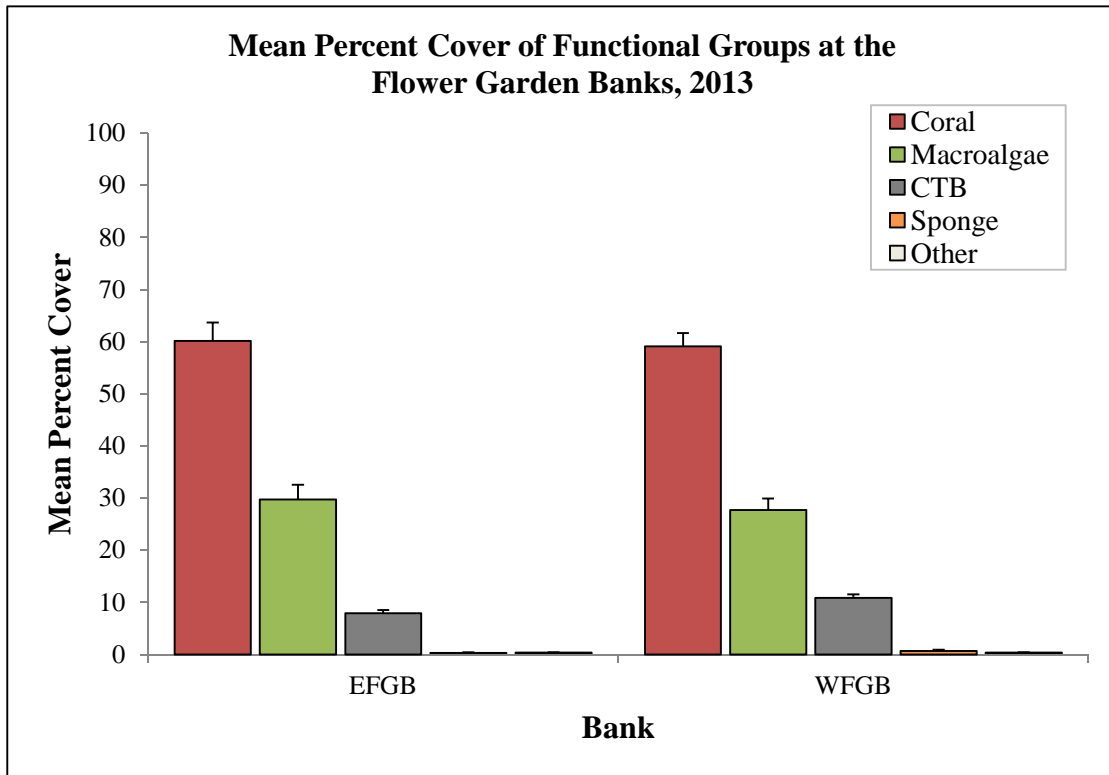


Figure 2.2. Mean percent cover + SE from random transect functional groups at the FGB.

Consistent with past monitoring results (Johnston et al. 2013), EFGB mean ( $\pm$  standard error) coral cover was above 50% in 2013 ( $60.16\% \pm 3.54$ ) and the sponge cover remained extremely low ( $0.32\% \pm 0.14$ ). Mean macroalgae cover was  $29.75\% \pm 2.81$  and mean CTB cover was  $7.94\% \pm 0.58$ . At WFGB, mean coral cover was above 50% ( $59.10\% \pm 2.59$ ), followed by mean macroalgae ( $27.71\% \pm 2.19$ ), CTB ( $10.83\% \pm 0.73$ ), and sponge cover ( $0.65\% \pm 0.27$ ). When compared for differences between banks based on functional groups, no significant dissimilarities were found, suggesting that EFGB and WFGB were similar in overall benthic community composition.

In the 2013 random transects, less than 1% of the coral cover analyzed showed incidences of bleaching, paling, and fish biting, and coral disease was not observed. It is important to note that bleaching as determined by the long-term monitoring methodology may be incomplete, as surveys usually occur in early summer months when weather is optimal (before signs of bleaching occur).

*Orbicella franksi* was the most abundant coral species observed in 2013 ( $26.90\% \pm 4.15$ ) at EFGB. *Pseudodiploria strigosa* ( $8.23\% \pm 1.87$ ) was the next most abundant species. Corals that could not be differentiated (less than 0.3%) because of camera angle or camera distortion were labeled as “unidentified coral” (Figure 2.3). *Orbicella franksi* was also the most abundant coral species observed in 2013 ( $27.56\% \pm 2.56$ ) at WFGB, followed by *Pseudodiploria strigosa* ( $9.59\% \pm 1.69$ ) (Figure 2.3).

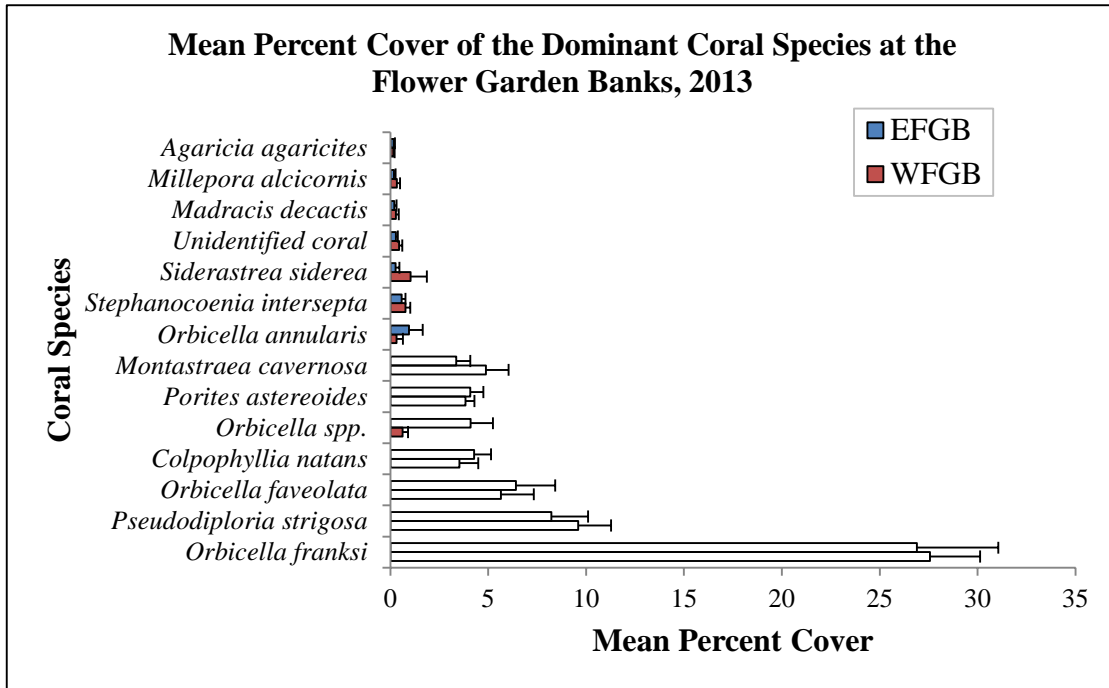


Figure 2.3. Mean percent cover + SE of observed dominant coral species from random transects.

Diversity measures were averaged between EFGB and WFGB over the year (Table 2.2). When compared for differences between banks based on diversity measures, a spatial variation occurred (Global R=0.083, p=4.5%). While these differences are biologically significant, the very small R value indicates that the dissimilarities between groups are less than some of the within-group dissimilarities, and are therefore, uninformative.

Table 2.2. Diversity measures presented as mean ± SE from 2013.

Random Transect Diversity Measures	EFGB	WFGB
Species Richness	16.27 ± 0.15	16.79 ± 0.14
Margalef's Species Richness (d)	0.94 ± 0.04	1.00 ± 0.04
Pielou's Evenness (J')	0.86 ± 0.02	0.86 ± 0.01
Shannon Diversity (H'(loge))	1.09 ± 0.02	1.15 ± 0.02

### *Random Transect Long-Term Trends*

A historical comparison of dominant cover components is an important part of monitoring to measure changes over long time periods. Therefore, the mean percent benthic cover from the four main functional categories from the random transects (coral, sponge, macroalgae, and CTB) were analyzed. Mean percent coral cover showed an increase (39–62%) during the period from 1978–2013 at EFGB and WFGB; a mean of approximately 53% cover over time. The highest coral cover recorded was in 2010 at WFGB (Figure 2.4).

Multivariate historical cover analysis from EFGB and WFGB was compared among years (1994–2013) to evaluate changes in the benthic community. SIMPER analysis identified that for most comparisons from 1994–2013, the greatest contributors to the observed dissimilarity were CTB and macroalgae.

Cluster analysis and MDS plot placed the mean percent cover from 1994–2013 in two clusters (80% similarity) (Figure 2.5). These data suggest a shift from one type of community structure in 1998 to another that has persisted until 2012; a significant shift in community composition occurred from 1999–2002, then similar again from 2003–2012.

In 1999, an increase in macroalgae cover was observed, leading to a reciprocal relationship between macroalgae and CTB cover until 2008. After 2008, macroalgae dominated CTB cover, as macroalgae cover continued to increase. These trends correspond to SIMPER results, suggesting that the greatest contributors to the observed dissimilarity over time were CTB and macroalgae. This also corresponds to the MDS plot, suggesting that from 1994–1998 the community was stable, and then from 1999–2008 there was a shift due to changes in the CTB and macroalgae cover, causing the community to stabilize once again from 2009–2013, but with higher macroalgae percent cover than ever recorded on both banks.

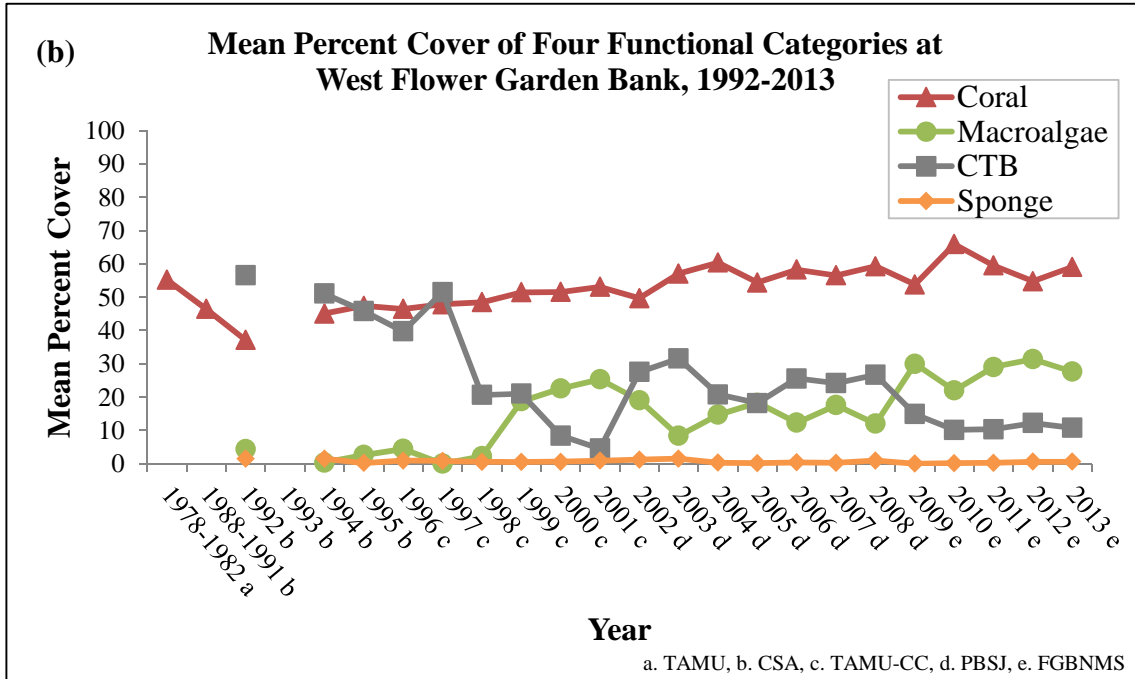
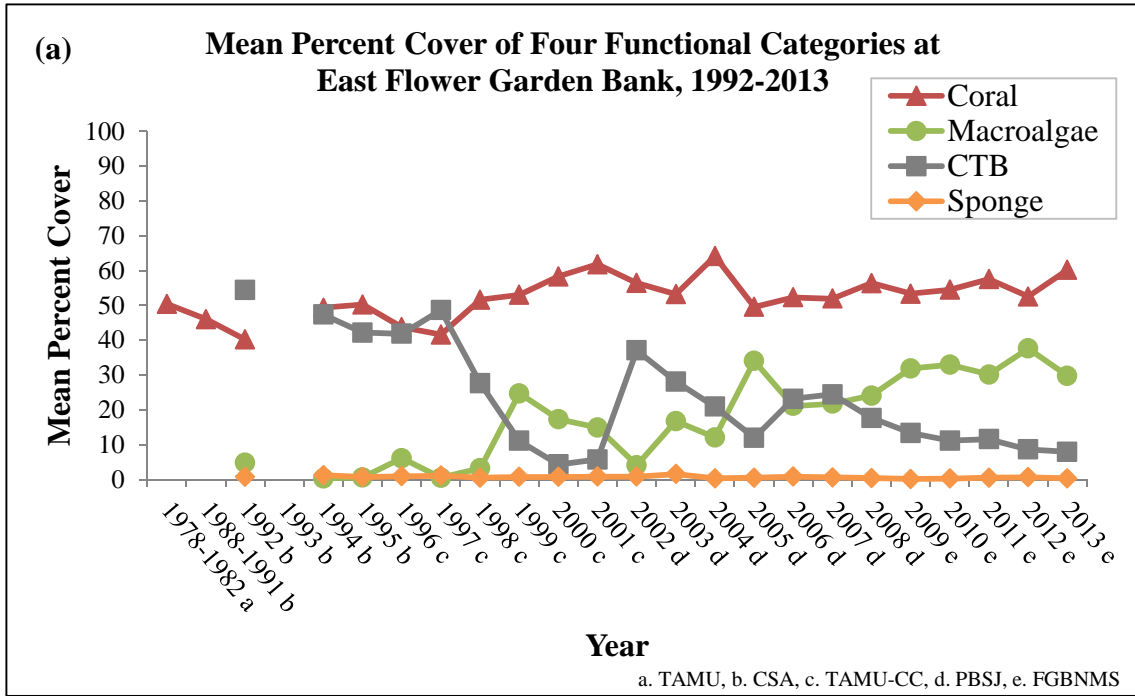


Figure 2.4. Mean percent cover of coral, sponge, macroalgae, and CTB at (a) EFGB and (b) WFGB.

No mean percent cover data were reported in 1993. Data for 1978–1982 from Gittings et al. (1992), who reported data from Kraemer (1982); for 1988–1991 from Gittings et al. (1992); for 1992–1995 from Continental Shelf Associates, Inc. (CSA 1996); for 1996–2001 from Dokken et al. (2003); 2002–2008 from PBS&J (Precht et al. 2006, 2008b); and FGBNMS for 2009–2010 (Johnston et al. 2013) and 2011–2012 (Johnston et al. 2015 in review).



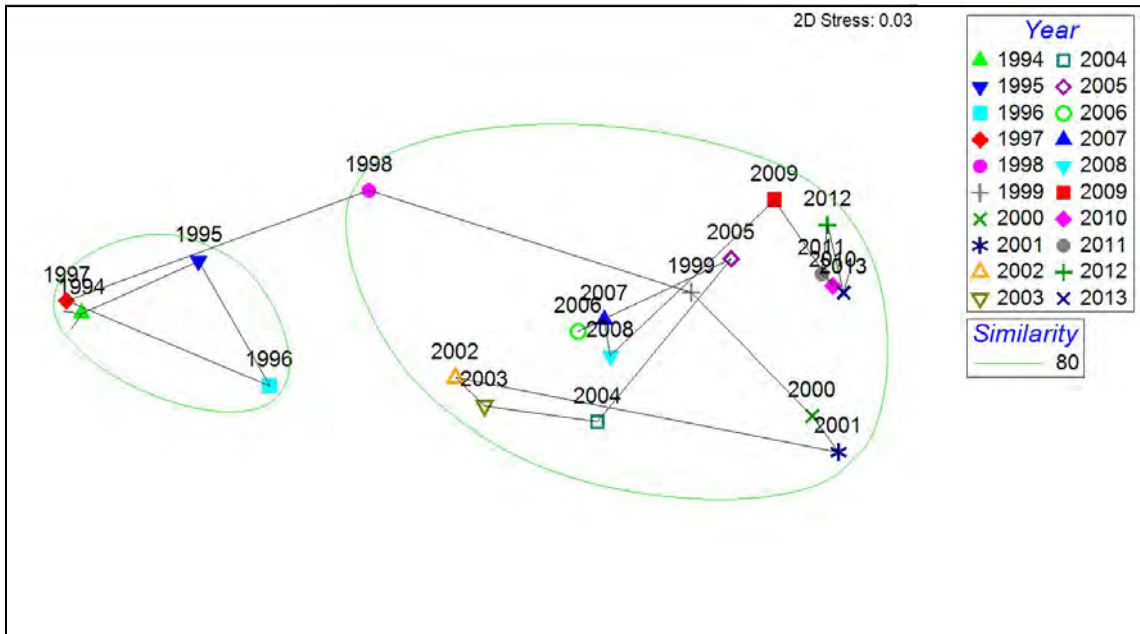



Figure 2.5. Two-dimensional MDS plot based on Bray-Curtis similarities comparing benthic cover analysis from 1994–2013 at the EFGB and WFGB.

The green circle groups surveys that are 80% similar.

## Random Transect Discussion

In a global trend of declining coral reef health and cover, the FGB continues to support high coral cover compared to reefs of the western Atlantic and Caribbean region (Aronson et al. 1994, 2005; Gardner et al. 2003; AGRRA 2003; Pina Amargós et al. 2008; Steneck et al. 2011; Johnston et al. 2013). Gardner et al. (2003) reported the regional decline of corals across the Caribbean basin over the last three decades, with mean coral cover on reefs decreasing from approximately 50% to 10%. Natural and anthropogenic factors, including storms, temperature stress, disease, predation, overfishing, sedimentation, eutrophication, and habitat destruction have all played a part in the decline (Aronson and Precht 2001; Rogers and Beets 2001; Gardner et al. 2003).

Caribbean reefs that have historically displayed high coral cover are showing declines, mainly due to algae competition and bleaching or coral disease, or both. Bonaire reported a decrease in coral cover from 38% to 10% in 2011 (Steneck et al. 2011). Mean coral cover in Florida Keys National Marine Sanctuary decreased from 13% to 7% (ONMS 2011). In contrast, coral cover at the FGB has remained relatively stable throughout the monitoring program (Figure 2.6) and is between 6 to 11 times higher than cover values estimated for other locations in the Caribbean region (Caldow et al. 2009; Johnston et al. 2013; Clark et al. 2014). Analysis of the random transect data revealed that the mean percent coral cover at EFGB and WFGB was approximately 60% in 2013.



A noticeable trend is that macroalgae cover has increased since the beginning of the monitoring program (Figure 2.4). Macroalgae cover at the FGB remained relatively low until 1999, and never reached greater than 6.1% at either bank. It increased dramatically in 1999 and, while fluctuating, has remained comparatively high when compared to previous years. In some areas within the region, increased algae cover has driven coral decline; however, this has not yet happened at the FGB (ONMS 2011). Despite increasing macroalgal cover, coral cover has remained above 50% since the beginning of the monitoring program.

---

## Chapter 3

### REPETITIVE QUADRAT PHOTOSTATIONS



Photo: NOAA FGBNMS/G.P. Schmahl

NOAA diver, Ryan Eckert, photographs a repetitive quadrat photostation at East Flower Garden Bank.

## Repetitive Quadrat Photostation Introduction

Permanent repetitive quadrat photostations covering 5 m<sup>2</sup> were photographed to monitor changes in the composition of benthic assemblages in repetitive sites at EFGB and WFGB study sites. The photographs were analyzed to measure percent benthic cover components in 2013 using random-dot analysis.

## Repetitive Quadrat Photostation Methods

### *Repetitive Quadrat Photostation Field Methods*

In 2013, thirty-seven and forty-one repetitive quadrats were photographed at EFGB and WFGB, respectively. Each repetitive quadrat photostation was located by SCUBA divers using detailed study site maps and the stations were photographed to document changes in the composition of benthic assemblages at these repetitive sites (Figure 3.1).

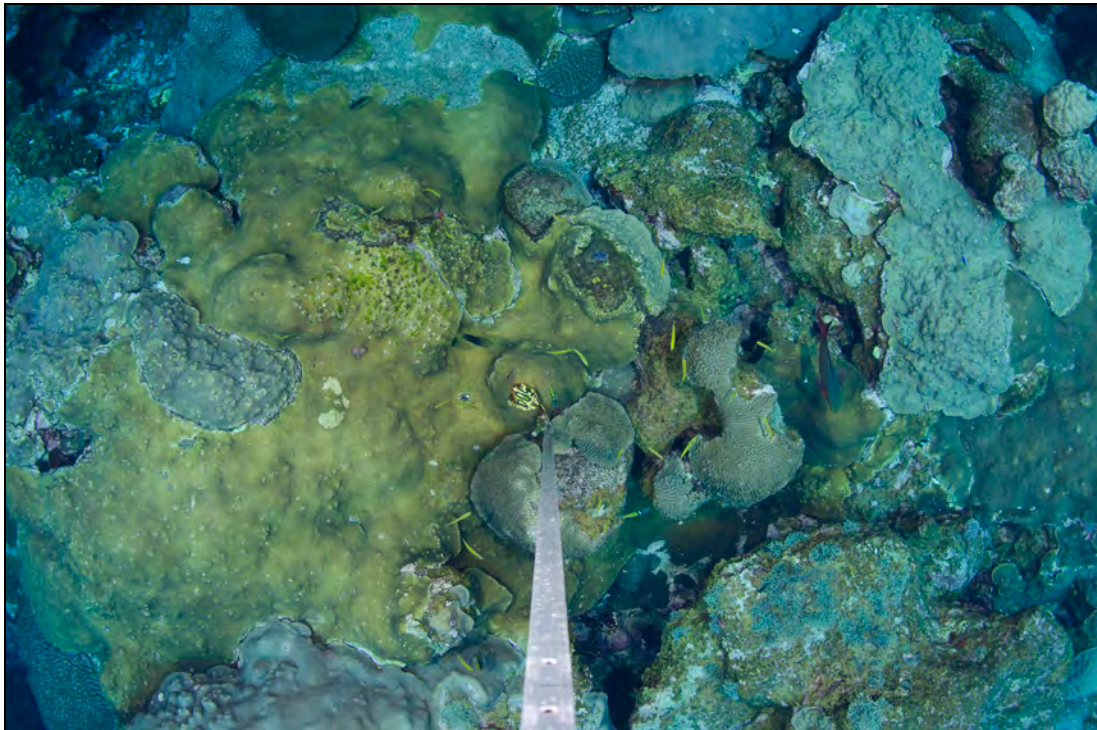


Photo: NOAA FGBNMS/G.P. Schmahl

Figure 3.1. Repetitive quadrat photostation #504 at WFGB in 2013.

Stations were photographed using a Nikon<sup>®</sup> D7000<sup>®</sup> SLR camera with 16 mm lens in Sea&Sea<sup>®</sup> housing with small dome port and two Inon Z240<sup>®</sup> strobes. The camera was mounted in the center of a T-shaped camera frame, at a distance of 2 m from the substrate. To ensure that the same quadrats were photographed in the same manner each year, the frame was oriented in a north-facing direction and kept vertical using an attached bulls-eye bubble level. This set-up produced images with a coverage of 5 m<sup>2</sup>.

### *Repetitive Quadrat Photostation Data Processing*

A total of 100 random dots were overlaid on each photograph and benthic species lying under these points were identified using CPCe, as described in Chapter 2.

### *Repetitive Quadrat Photostation Analysis*

All nonparametric analysis for non-normal data were carried out using Primer® version 6.0, as described in Chapter 2.

## Repetitive Quadrat Photostation Results

### *Repetitive Quadrat Photostation Mean Percent Cover*

At EFGB, mean coral cover was recorded above 60% in 2013 ( $63.33\% \pm 2.71$ ), and the sponge cover was extremely low ( $0.29\% \pm 0.11$ ). Mean macroalgae cover was  $28.98\% \pm 2.30$ , and mean CTB cover was  $6.58\% \pm 0.88$ . In repetitive quadrats at WFGB, mean coral cover remained above 60% in 2013 ( $62.29\% \pm 1.88$ ). The sponge cover was low at the WFGB ( $0.26\% \pm 0.13$ ). Mean macroalgae cover was  $23.47\% \pm 1.60$  and CTB cover was  $12.62\% \pm 1.01$ .

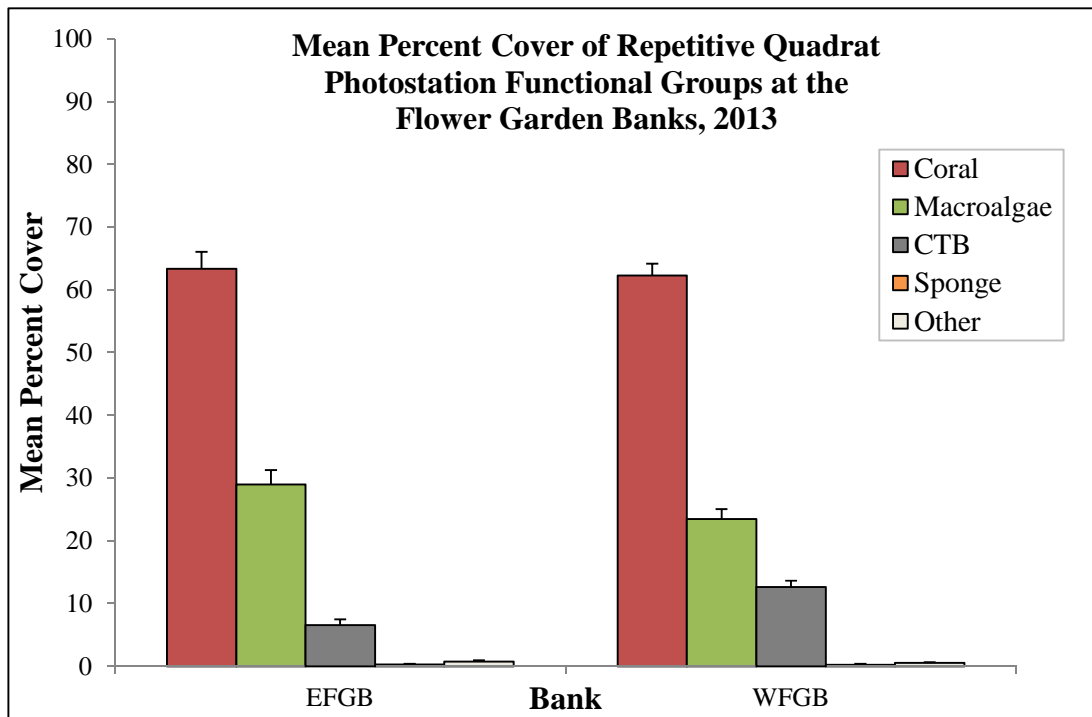


Figure 3.2. Repetitive quadrat photostation functional group mean percent cover + SE at the FGB.

Less than 0.5% of the coral cover analyzed was observed to bleach, pale, or show signs of isolated or concentrated fish biting. No incidences of coral disease were observed. When compared for differences between banks based on functional groups, a significant spatial variation occurred (Global R=0.122, p=0.1%). SIMPER analysis identified that for comparisons between EFGB and WFGB, the greatest contributor to the observed dissimilarity was macroalgae.

*Orbicella franksi* was the dominant coral cover component at the EFGB repetitive quadrat photostations (32.54% ± 3.22). *Pseudodiploria strigosa* (10.87% ± 1.87) and *Porites astereoides* (4.40% ± 0.56) were the next most abundant species (Figure 3.3). *Orbicella franksi* was also the dominant coral cover component at the WFGB repetitive photostations (30.99% ± 2.53). *Pseudodiploria strigosa* (9.66% ± 1.70) and *Orbicella* spp. (5.45% ± 1.24) were the next most abundant species (Figure 3.3).

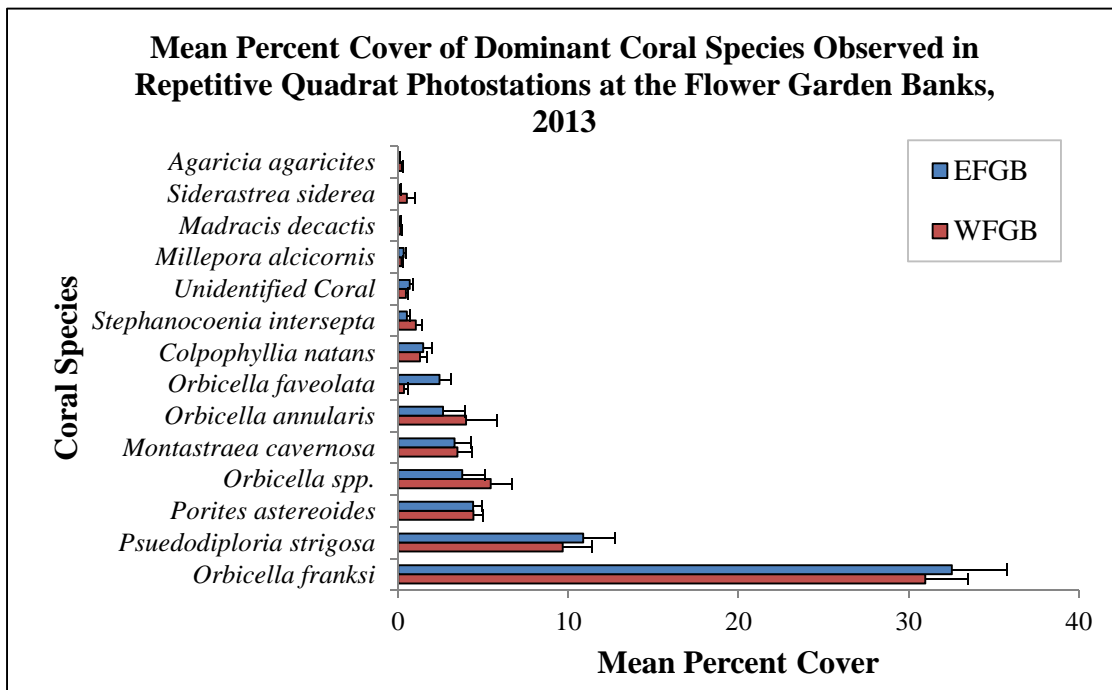


Figure 3.3. Dominant coral mean percent cover + SE observed in repetitive quadrat photostations.

### Repetitive Quadrat Photostation Long-Term Trends

The mean percent benthic cover from the repetitive quadrat photostations was analyzed to measure changes over time. Mean percent coral cover showed an increase from 1992–2013. At EFGB, the highest coral cover recorded was in 2002 (73%) with a mean of approximately 61% coral cover over time (Figure 3.4). At WFGB, the highest coral cover was recorded in 2010 (74%) with a mean of approximately 61% overtime. Periods of lower CTB cover generally coincided with increases in the macroalgae component (Figure 3.4).

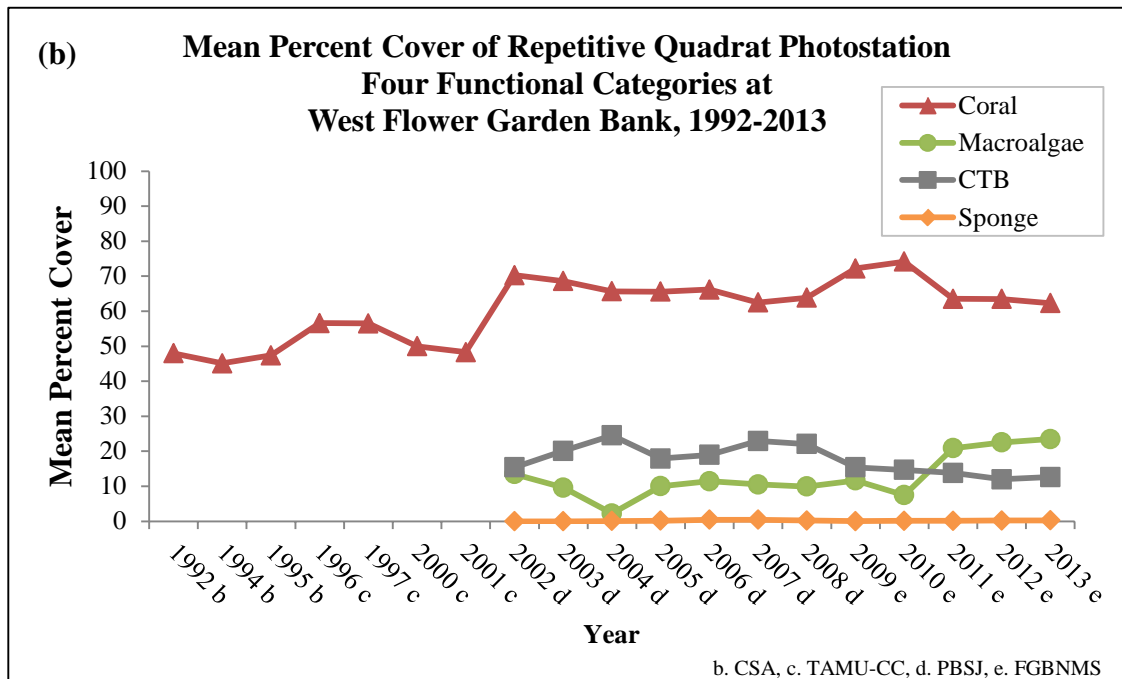
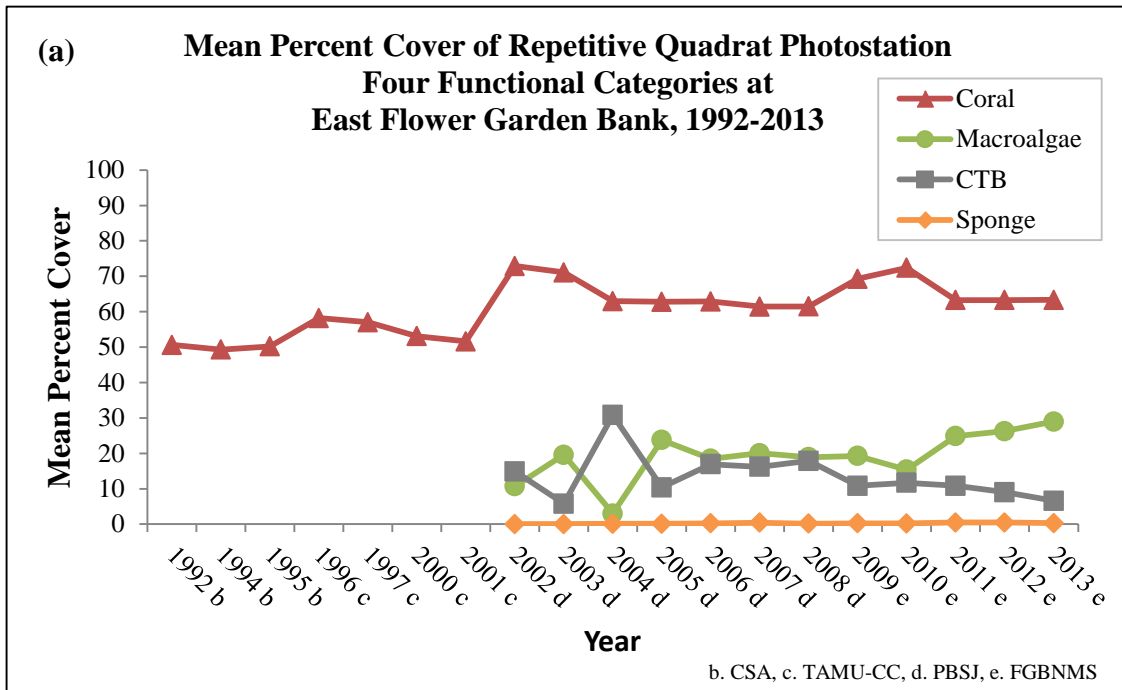


Figure 3.4. Mean percent cover of coral, sponge, macroalgae, and CTB at (a) EFGB and (b) WFGB.

Coral cover data was not collected at the stations until 1992, and the remaining categories did not begin until 2002. No mean percent cover data were reported in 1993. Data for 1992–1995 from Continental Shelf Associates, Inc. (CSA) (1996); for 1996–2001 from Dokken et al. (2003); 2002–2008 from PBS&J (Precht et al. 2006, 2008b); and FGBNMS for 2009–2010 (Johnston et al. 2013) and 2011–2012 (Johnston et al. 2015 in review).

Multivariate historical cover analysis among years (2002–2013) was used to evaluate changes in benthic community structure. SIMPER analysis identified that, for most comparisons from 2002–2013, the greatest contributors to the observed dissimilarity were CTB and macroalgae. Cluster analysis and MDS suggest that the plot placed the mean percent cover from 2002–2013 in one tight cluster (90% similarity), with the year 2004 as an outlier (Figure 3.5). After 2004, macroalgae cover increased. These trends correspond to SIMPER results, suggesting that the greatest contributors to the observed dissimilarity over time were CTB and macroalgae. This also corresponds to the MDS plot, suggesting that between 2002–2003 the community was stable, with a significant shift in community composition occurring in 2004, then stabilizing again from 2005–2013, but with higher macroalgae percent cover than ever recorded in repetitive quadrat photostations.

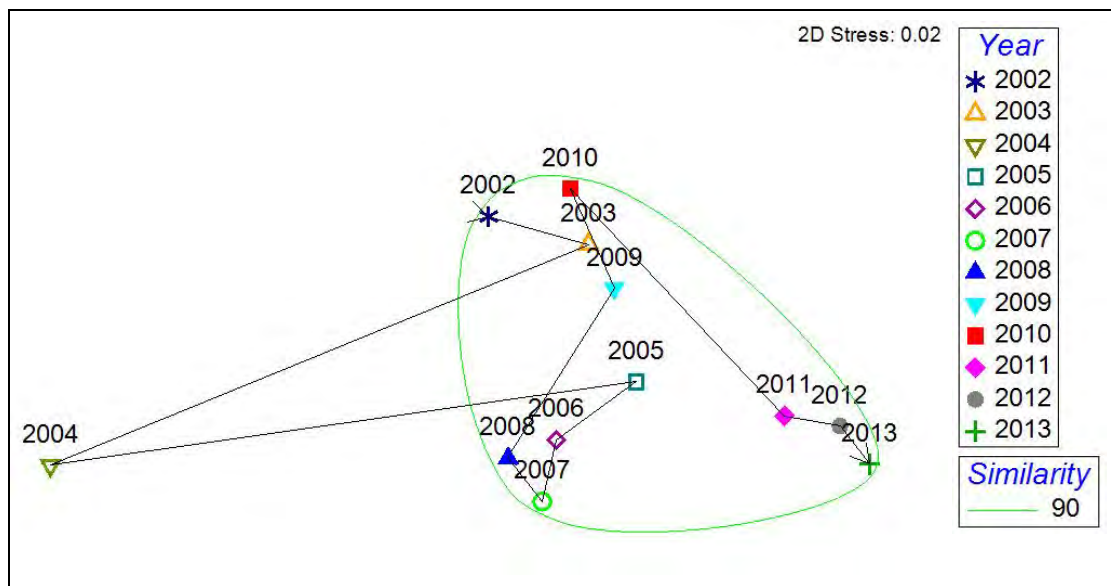


Figure 3.5. Two-dimensional MDS plot based on Bray-Curtis similarities comparing benthic cover analysis from 2002–2013 at EFGB and WFGB repetitive quadrat photostations.

The green line groups surveys that are 90% similar.

## Repetitive Quadrat Photostation Discussion

Higher coral cover estimates (63%) were obtained from the repetitive quadrat photostations in comparison to the random transects (60%) at both EFGB and WFGB. It should be noted that this does not provide a comprehensive view of the dominant species at EFGB and WFGB, because repetitive photostations are biasedly placed on diverse habitat with high coral cover (large coral colonies).



Repetitive quadrat photostations also display a time series from 2006–2013. Like most stations, in the example from EFGB station 102, the overall coral community appears to be stable from 2006–2013 and in good health during all years (Figure 3.6). Some colonies may appear paler in certain years due to variations in photographic equipment (e.g., note large *Montastraea cavernosa* in upper right corner in 2010), because all photos are subject to varying degrees of differing camera settings, lighting, etc. Small changes include concentrated fish biting (bright white patch in the center of the frame) in 2011, and a damselfish garden that appeared on a *Pseudodiploria strigosa* head in the lower left corner in 2011, affecting approximately 25% of the colony in 2011 and more than 50% of the colony in 2013.

Overall, the most noticeable patterns were: 1) inverse relationship between CTB and the macroalgae cover, 2) increasing macroalgae cover, and 3) stable coral cover over time. Despite the higher coral cover in the repetitive quadrats, these stations showed similar trends observed in the random transects, suggesting that monitoring these specific stations may give a representative view of the dynamics of the overall study site, with an increasing trend in algal cover.

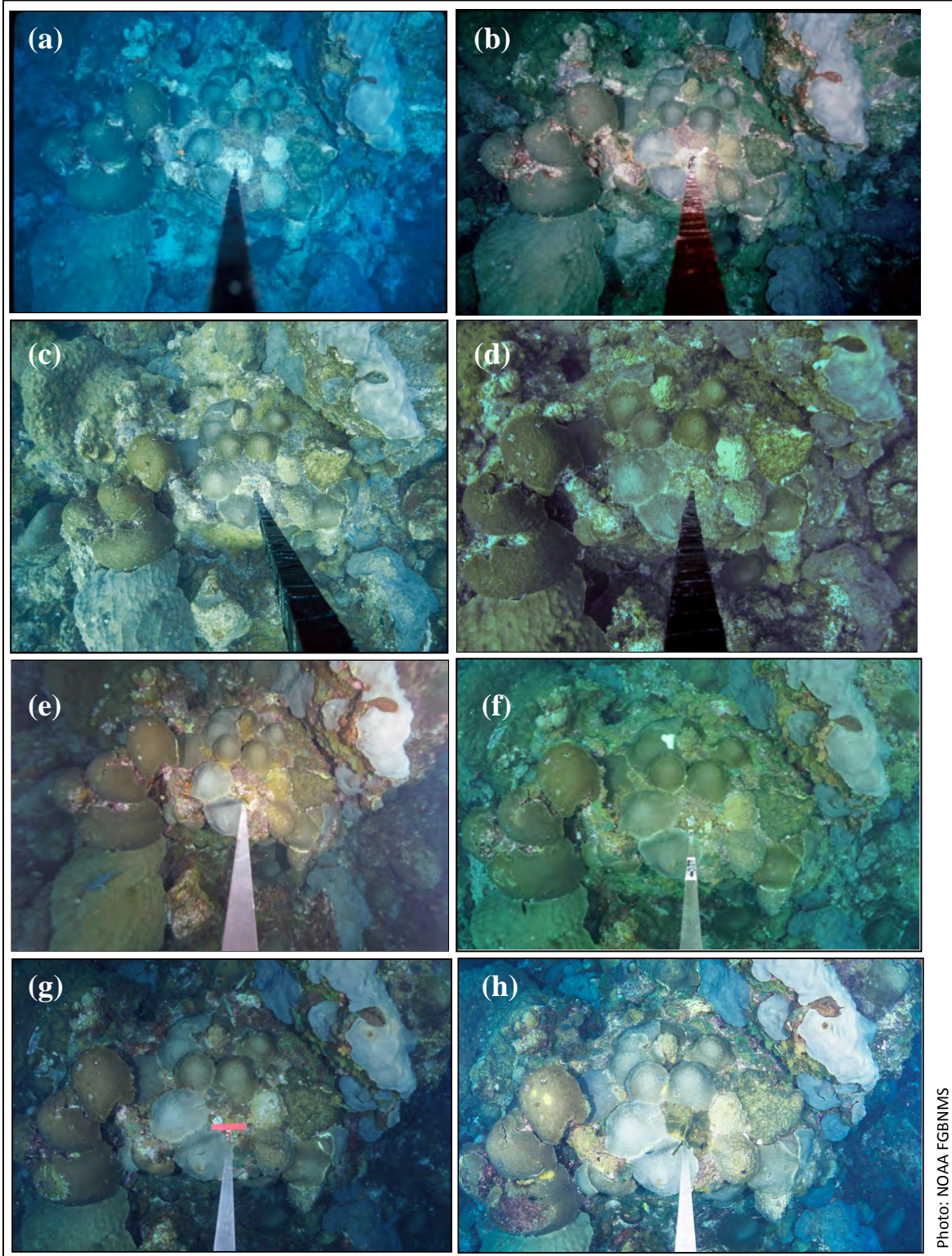


Photo: NOAA FGBNIMS

Figure 3.6. Repetitive quadrat photostation 102 from the EFGB in a time series showing a healthy and stable coral community from (a) 2006; (b) 2007; (c) 2008; (d) 2009; (e) 2010; (f) 2011; (g) 2012; (h) 2013.

---

## Chapter 4

---

### REPETITIVE DEEP PHOTOSTATIONS

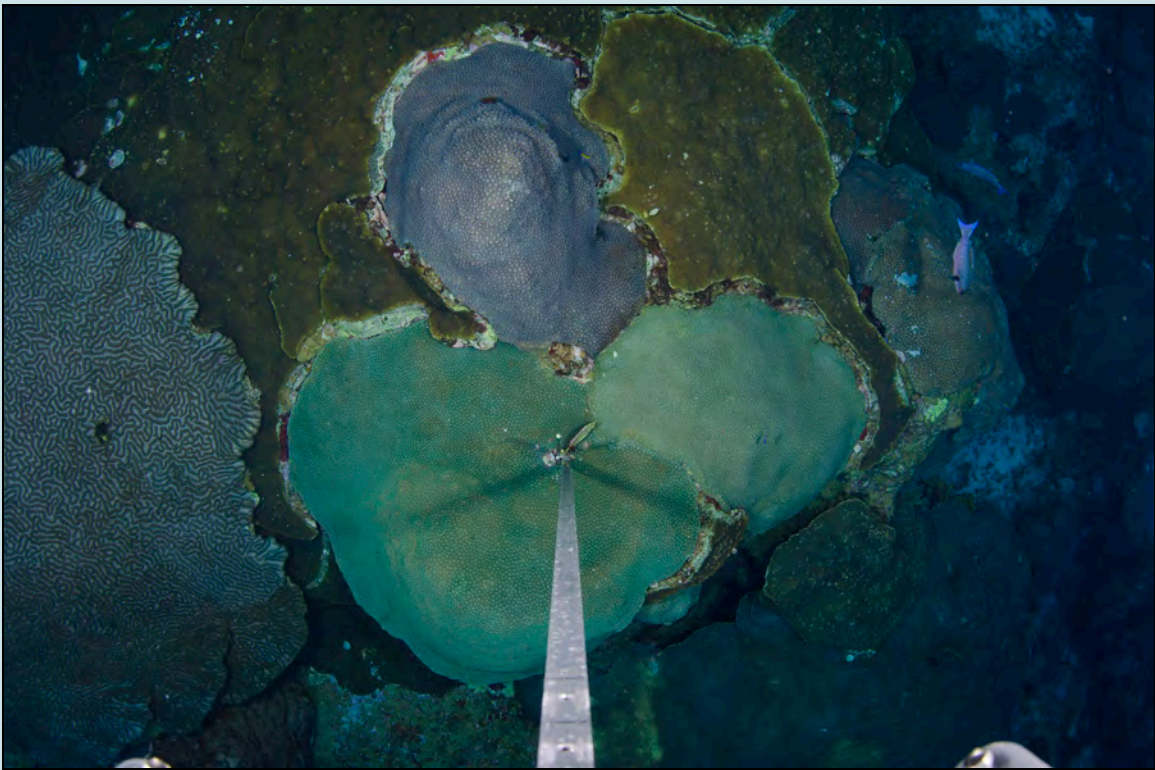


Photo: NOAA FGBNMS/G.P. Schmahli

Repetitive deep photostation #7 at East Flower Garden Bank in 2013.

## Repetitive Deep Photostation Introduction

Permanent repetitive deep photostations covering 5 m<sup>2</sup> were photographed to compare to the benthic composition of the shallower repetitive quadrat photostations. The deep repetitive photostations were located outside the EFGB and WFGB study sites, ranging from 24–40 m depths. EFGB deep repetitive stations were established in 2003 and WFGB deep repetitive stations were established in 2012. The photographs were analyzed to measure percent benthic cover components in 2013 using random-dot analysis.

## Repetitive Deep Photostation Methods

### *Repetitive Deep Photostation Field Methods*

Eleven repetitive deep photostations were located outside the study site at EFGB near buoy#2. The photostations were located east of EFGB study site at depths between 32–40 m. Twelve repetitive deep photostations were located outside the study site at WFGB near buoy #2. The stations were located 78 m north of WFGB study site mooring at depths between 24–38 m. Each station was located by SCUBA divers using detailed maps and photographed annually (see methods in Chapter 3) to monitor changes in the composition of benthic assemblages at these deep repetitive sites (Figure 4.1).

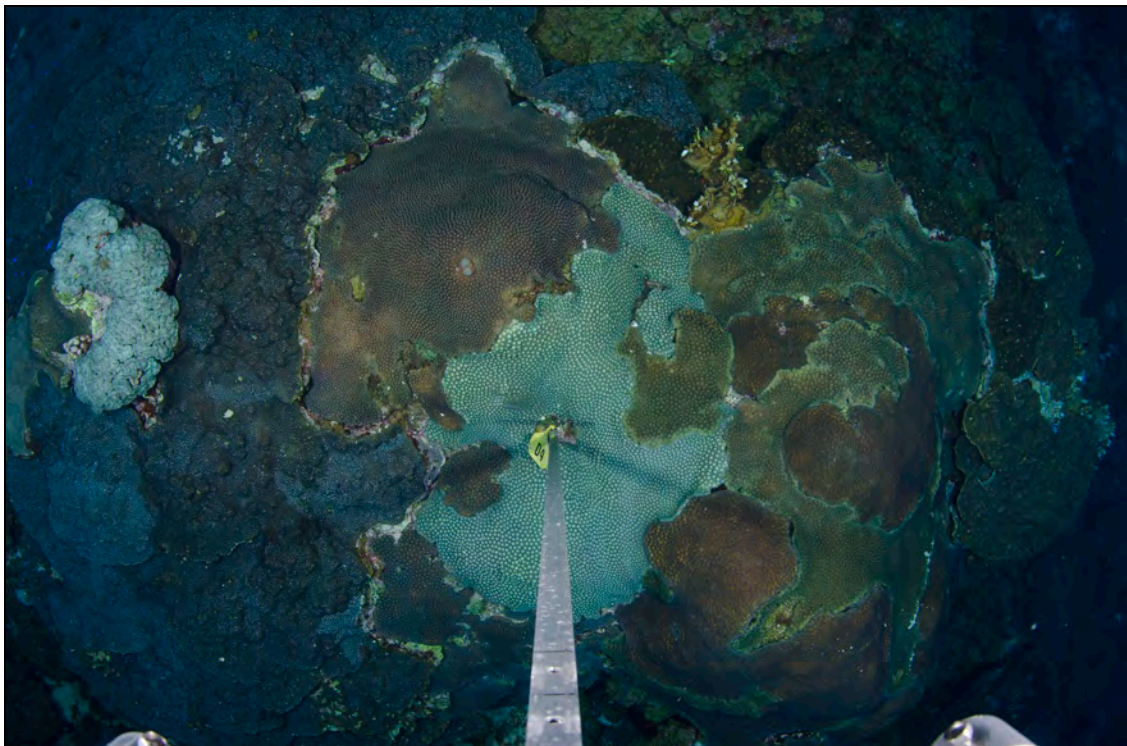


Photo: NOAA FGBNMS/G.P. Schmahl

Figure 4.1. Repetitive deep photostation #4 at EFGB in 2013.

### *Repetitive Deep Photostation Data Processing*

A total of 100 random dots were overlaid on each photograph and benthic species lying under these points were identified using CPCe, as described in Chapter 2.

### *Repetitive Deep Photostation Analysis*

All nonparametric analysis for non-normal data were carried out using Primer® version 6.0, as described in Chapter 2.

## **Repetitive Deep Photostation Results**

### *Repetitive Deep Photostation Mean Percent Cover*

The major benthic component of the repetitive deep photostations was coral cover (74%), followed by macroalgae (19%), CTB (6%), and sponge cover (0.8%) (Figure 4.2). The coral cover analyzed exhibited no signs of disease or bleaching.

At EFGB, mean coral cover was above 70% in 2013 ( $74.98\% \pm 3.68$ ), while sponge cover was not detected. Macroalgae cover was  $20.08\% \pm 3.06$ , and CTB cover was  $4.83\% \pm 1.19$  (Figure 4.2). At WFGB, mean coral cover was above 70% in 2013 ( $72.33\% \pm 4.37$ ) and sponge cover was very low ( $0.52\% \pm 0.90$ ). Mean macroalgae cover was  $18.25\% \pm 3.67$  and CTB cover was  $6.90\% \pm 0.66$  (Figure 4.2).

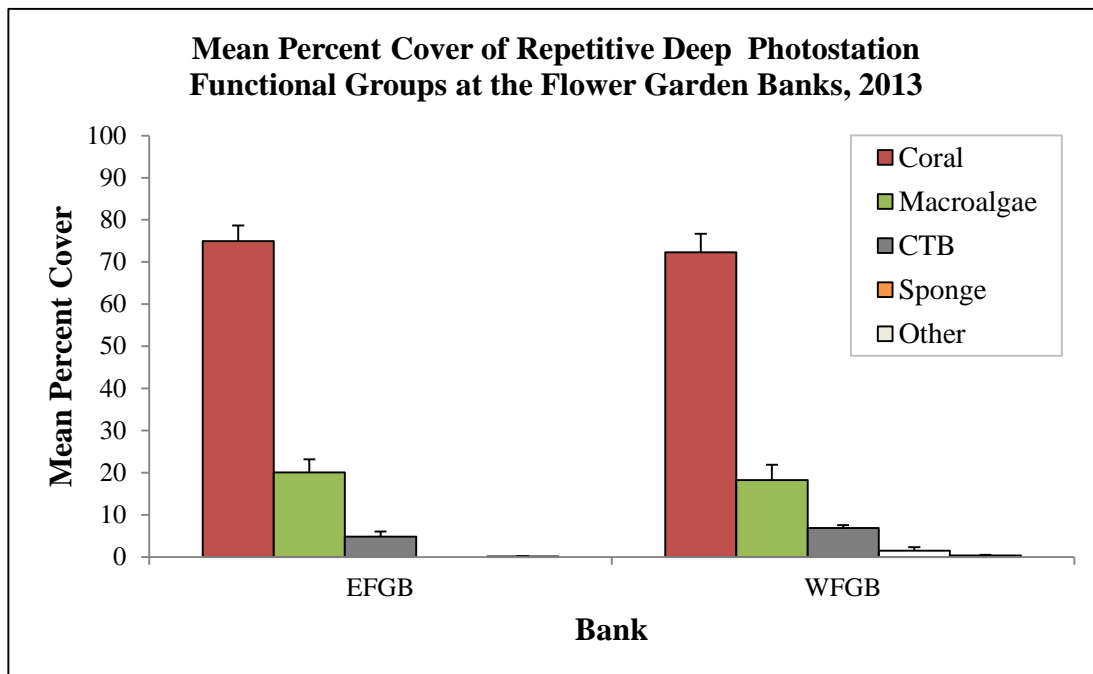


Figure 4.2. Repetitive deep photostation functional group mean percent cover +SE at the FGB.

When compared for differences between banks based on functional groups, no significant dissimilarities were found, suggesting that EFGB and WFGB repetitive deep photostations are similar in overall benthic community composition.

Similar to the random transects in the previous section and the shallow repetitive quadrat photostations, *Orbicella franksi* was the dominant mean coral cover component ( $33.81\% \pm 4.42$ ) at EFGB. Different from the shallower repetitive quadrats and random transects, *Montastraea cavernosa* ( $15.98\% \pm 4.61$ ) was the next dominant deep station coral at the EFGB. This was followed by *Colpophyllia natans* ( $5.92\% \pm 2.40$ ) and *Madracis mirabilis* ( $5.72\% \pm 3.91$ ) (Figure 4.3).

At WFGB in 2013, *Orbicella franksi* was the main coral cover component ( $34.38\% \pm 6.69$ ). *Montastraea cavernosa* ( $17.46\% \pm 3.93$ ) was the next dominate repetitive deep photostation coral at WFGB, which was followed by *Stephanocoenia intersepta* ( $7.12\% \pm 3.39$ ) and *Madracis mirabilis* ( $3.23\% \pm 2.65$ ) (Figure 4.3).

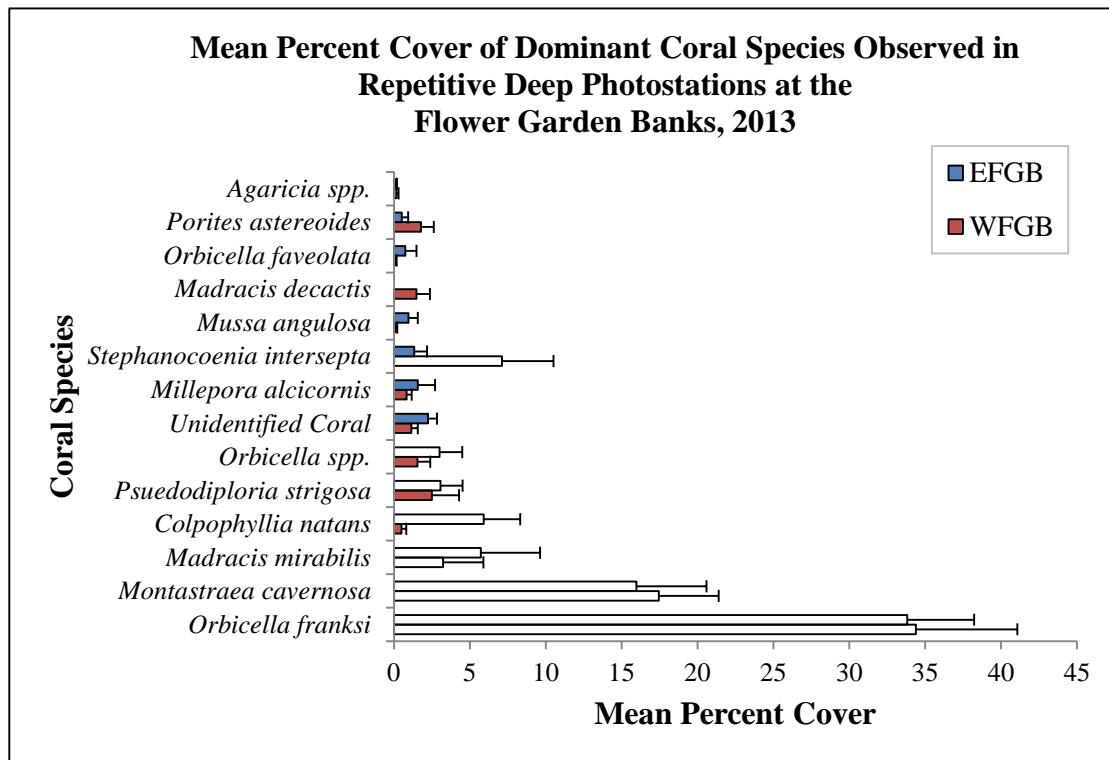


Figure 4.3. Mean percent cover + SE of dominant corals observed in repetitive deep photostations.

### *Repetitive Deep Photostation and Repetitive Quadrat Shallow Station Comparison*

The mean percent coral cover was higher in the repetitive deep photostations (Deep Stations, or DS) when compared to the repetitive quadrat shallow photostations (Shallow Stations, or SS); it averaged 74% from the deep stations and 63% at the shallow repetitive quadrats in the study sites. Mean deep station macroalgae cover for both banks was 19%, while the shallow stations macroalgae cover was 26% in 2013. Mean percent CTB cover at the deep stations was 6% and the mean CTB cover at the repetitive shallow stations was 10%. Mean percent sponge cover was below 1% for both the deep and shallow repetitive stations (Figure 4.4).

When compared for differences between banks and depth based on community structure, a spatial variation occurred between banks (Global  $R=0.013$ ,  $p=4.1\%$ ). While these differences are biologically significant, the very small  $R$  value indicates that the dissimilarities between groups are less than some of the within-group dissimilarities, and are therefore, uninformative.

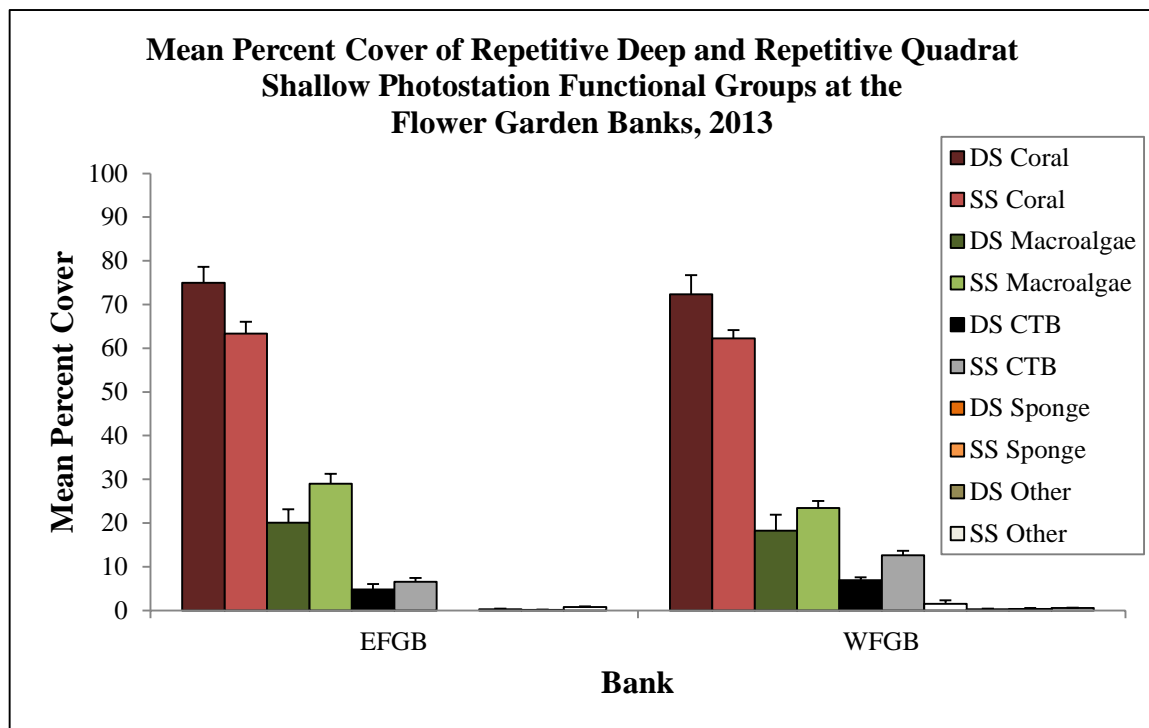


Figure 4.4. Repetitive deep photostation (DS) and repetitive quadrat shallow photostation (SS) functional group mean percent cover + SE at the FGB in 2013.

### Repetitive Deep Photostation Long-Term Trends

Mean percent coral cover in the repetitive deep photostations was approximately 77% during the period from 2003–2012 at EFGB; the highest cover was recorded in 2004 (86%). In 2012, twelve deep stations were established at WFGB. The mean coral cover in WFGB deep station quadrats was 75% between 2012–2013.

At EFGB, increases in macroalgae cover generally coincided with decreases in CTB cover (Figure 4.5). Overall, the most noticeable pattern was the inverse relationship between CTB components and macroalgae cover, with an increasing trend in algae cover, similar to the random transects and repetitive quadrats in the study sites on the shallower portion of the reef cap. At this time, the results suggest that algal overgrowth is not affecting estimates of underlying benthic coral cover. However, this is a general observation, because coral does not grow and die at the same rate as algae.

At WFGB, mean coral cover decreased from 77% in 2012 to 72% in 2013, while macroalgae increased from 14% to 18%. CTB (7%) and sponge (1%) remained stable from 2012 to 2013.

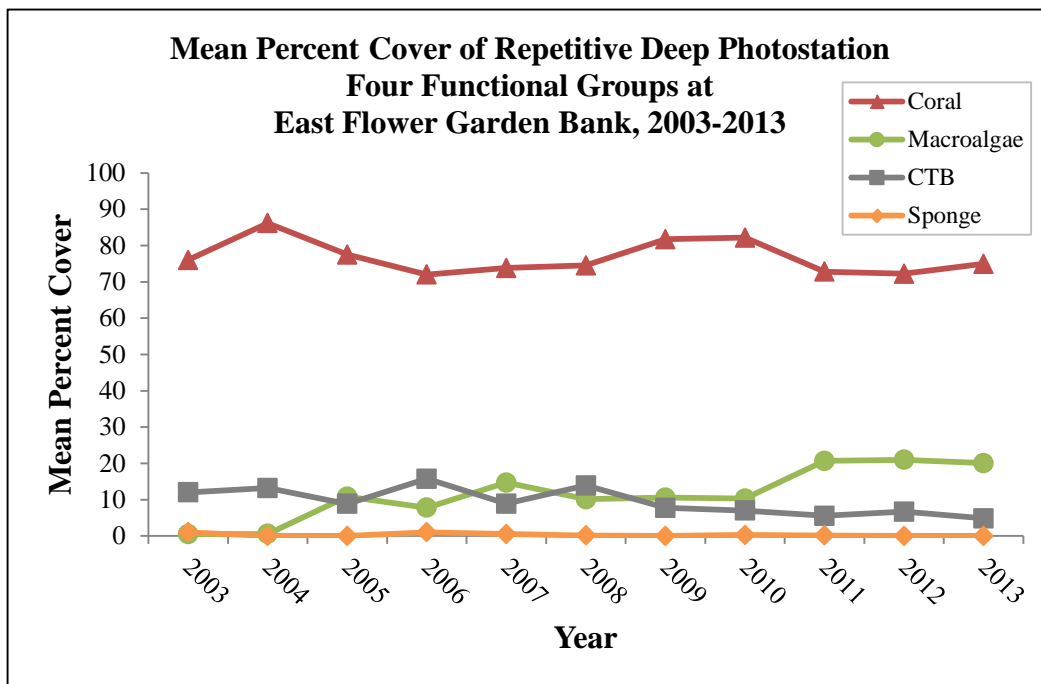


Figure 4.5. Repetitive deep photostation mean percent cover of coral, sponge, macroalgae, and CTB at EFGB.

Data for 2002–2008 from PBS&J (Precht et al. 2006, 2008b) and FGBNMS for 2009–2010 (Johnston et al. 2013) and 2011–2012 (Johnston et al. 2015 in review).



## Repetitive Deep Photostation Discussion

Higher mean coral cover estimates (74%) were obtained from the repetitive deep photostations than were obtained from the repetitive quadrats (63%) and the random transects (60%). Higher percent mean coral cover in the repetitive deep photostations relative to repetitive quadrats and random transects has also been documented in previous reports (Precht et al. 2006, 2008b; Zimmer et al. 2010; Johnston et al. 2013; Johnston et al. 2015 in review). The deep stations were dominated by *Orbicella franksi*; *Montastraea cavernosa* was the second-most dominant coral species, unlike the shallower study sites. A noticeable difference between EFGB and WFGB repetitive deep photostations and the shallower repetitive quadrat photostations was the lack of *Orbicella annularis* cover at the deep depths and decreased occurrence of *Pseudodiploria strigosa*.

The mean percent coral cover was higher in the repetitive deep photostations (74%) when compared to the repetitive quadrat shallow photostations (63%). Macroalgae cover also appeared to differ, averaging 19% at the deep stations, and 26% at the shallow stations. Despite these individual differences in functional groups between the deep and shallow stations, these within group dissimilarities may not have been informative enough to detect an overall community difference between shallow and deep stations in the ANOSIM analysis.

Repetitive quadrat photostations also display a time series from 2004–2013 (Figure 4.6). Like most repetitive deep photostations, in the example from EFGB station D7, the overall coral community appears to be stable from 2004–2013 and in good health during all years (Figure 4.9). Some colonies may appear paler in certain years due to variations in photographic equipment, because all photos are subject to varying degrees of differing camera settings, lighting, etc. The first photo from 2004 was taken in a different orientation than the rest of the photographs. The large *Montastraea cavernosa* colonies in the center of the photographs appear to gain tissue as the year's progress, and the margin of the *Colpophyllia natans* colony on the left side of the photographs appears to grow closer to the *Montastraea cavernosa* colonies as well.

As with both the repetitive quadrat photostations and random transects, periods of increased algae cover generally coincided with decreases in the CTB category. Overall, the most noticeable patterns were: 1) inverse relationship between CTB and the macroalgae cover, 2) increasing macroalgae cover, and 3) stable coral cover over time, similar to the random transects and repetitive quadrat photostations.

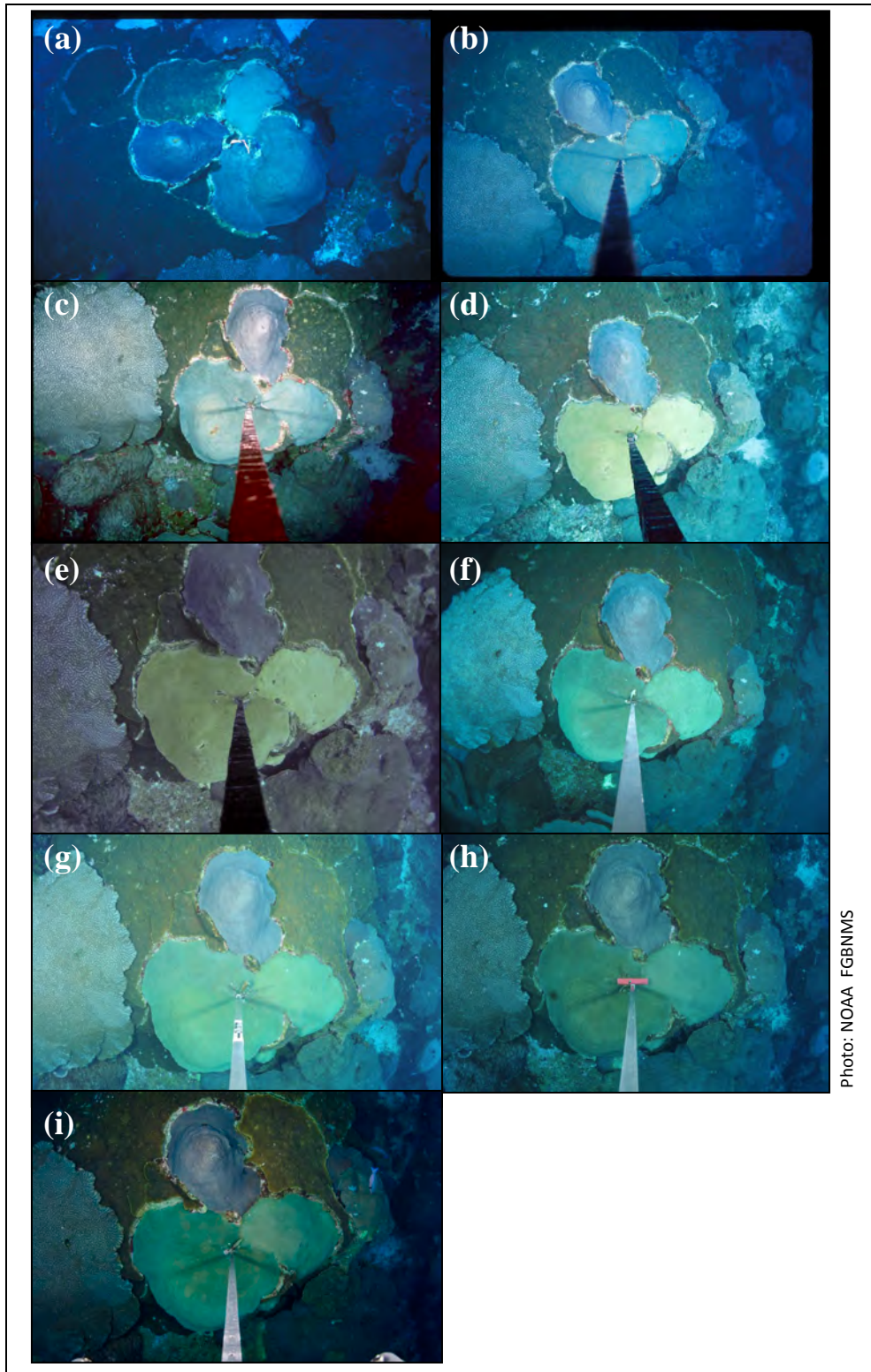


Photo: NOAA FGBNMS

Figure 4.6. Repetitive deep photostation #87 from EFGB in a time series showing a healthy and stable coral community from (a) 2004; (b) 2006; (c) 2007; (d) 2008; (e) 2009; (f) 2010; (g) 2011; (h) 2012; (i) 2013. No photos available for 2003 or 2005.

---

## Chapter 5

---

### FISH SURVEYS



A manta ray swims near NOAA diver, Michelle Johnston, while conducting a fish survey at East Flower Garden Bank.

## Fish Surveys Introduction

To examine fish population composition and changes over time, stationary visual fish surveys were conducted in the study sites at EFGB and WFGB. These surveys are used to characterize and compare fish assemblages between habitat types and years. Fish surveys were added to the long-term monitoring protocol in 2002.

## Fish Surveys Methods

### *Fish Surveys Field Methods*

Fishes were visually assessed by SCUBA divers using a modified Bohnsack and Bannerot (1986) stationary visual fish survey technique. Twenty-four randomly located surveys were conducted at both EFGB and WFGB, six surveys in each quadrant of the study sites. Observations of fishes were restricted to an imaginary cylinder with a radius 7.5 m from the diver, extending to the surface (Figure 5.1).



Photo: NOAA FGBNMS/G.P. Schmahl

Figure 5.1. NOAA diver, Marissa Nuttall, conducts a fish survey at EFGB.

All fish species observed within the first five minutes of the survey were recorded while the diver slowly rotated in place. Immediately following this five-minute observation period, one rotation was conducted for each species noted in the original five-minute period to record abundance (number of individuals per species) and total length (within size bins). Size was binned into eight groups; 0–5 cm, 5–10 cm, 10–15 cm, 15–20 cm, 20–25 cm, 25–30 cm, 30–35 cm, and >35 cm, where each individual's estimated total length was recorded. Each survey required 10–15 minutes to complete. Transitory or schooling

species were counted and measured at the time the individuals moved through the cylinder during the initial five-minute period. After the initial five-minute period, additional species were recorded but marked as observed after the official survey period. These observations were excluded from the analysis, unless otherwise stated. Fish survey dives began in the early morning (after 0700 CDT), and were repeated throughout the day until dusk. Survey locations were stratified randomly within the study sites, and each survey represents one sample.

### *Fish Surveys Data Processing*

Fish survey data was entered into a Microsoft® Excel® database by the surveyor. Entered data was checked for quality and accuracy prior to processing. For each entry, fish family, trophic guild, and biomass were recorded. Species were classified into ‘primary’ trophic guilds: herbivores (H), piscivores (P), invertivores (I), and planktivores (PL).

### *Fish Surveys Analysis*

Summary statistics of fish census data include abundance, density, sighting frequency, richness, diversity, and evenness. Fish densities are expressed as the number of fish per 100 m<sup>2</sup>. Sighting frequency for each species is expressed as the percentage of the total number of times the species was recorded out of the total number of surveys.

Species accumulation curves were generated, showing species accumulation as the increasing total number of species observed ( $S_{obs}$ ) and Chao’s estimator, based on the number of rare species (Chao1).

Fish biomass was computed by converting length data to weights using the allometric length-weight conversion formula:

$$W = \alpha * L^\beta$$

where  $W$  = individual weight (grams),  $L$  = length of fish (cm), and  $\alpha$  and  $\beta$  are constants for each species generated from the regression of its length and weight, derived from Froese and Pauly (2014) and Bohnsack and Harper (1988). Because lengths for every individual fish were not recorded, mean total lengths for each species size categories were used. A mean species-biomass per unit area estimate (g/m<sup>2</sup>) was calculated. Biomass and species accumulation plots were generated to make overall assessments of the fish community at EFGB and WFGB. Observations of manta rays and sting rays were removed from all biomass analyses due to their rare nature and large size.

Statistical analyses were conducted on square root transformed density and biomass data using Primer® version 6.0. Species composition differences between banks were analyzed by converting to ecological distance using Bray-Curtis similarity matrices (Bray and Curtis 1957). SIMPER were used to analyze community dissimilarity between banks and highlight species that contributed greatly to the observed dissimilarity. Cluster analyses were performed on similarity matrices, with SIMPROF tests, to identify

significant ( $\alpha=0.05$ ) clusters within the data. MDS plots, 100 random starting configurations to minimize stress, were generated to examine for evidence of community differences between banks (Kruskal 1964). Community differences were then compared for significant differences using ANOSIM. The R statistic, typically ranging between 0 and 1, indicates between and within group dissimilarities, where small R values ( $<0.3$ ) indicate that similarities between sites and within sites are the same (Clarke & Warwick 2001).

Dominance plots were generated for species abundance and biomass. W-values (difference between the biomass and abundance) were calculated for each survey. The difference between abundance and biomass curves,  $w$ , can range between  $-1 < w < 1$ . Where  $w=1$  indicates that the population has an evenly distributed abundance, but that biomass is dominated by few species, and where  $w=-1$  indicates that the converse is true. Two-sample t-tests (two-tailed) were used for parametric data, including w-values. Students t-test were used for pair-wise comparisons with the statistical software JMP<sup>®</sup> version 10.0.

## Fish Surveys Results

Brown Chromis (*Chromis multilineata*) were the most abundant species overall, followed by Atlantic Creolefish (*Paranthias furcifer*), Bluehead (*Thalassoma bifasciatum*), and Creole Wrasse (*Clepticus parrae*) at both banks (Figure 5.2).

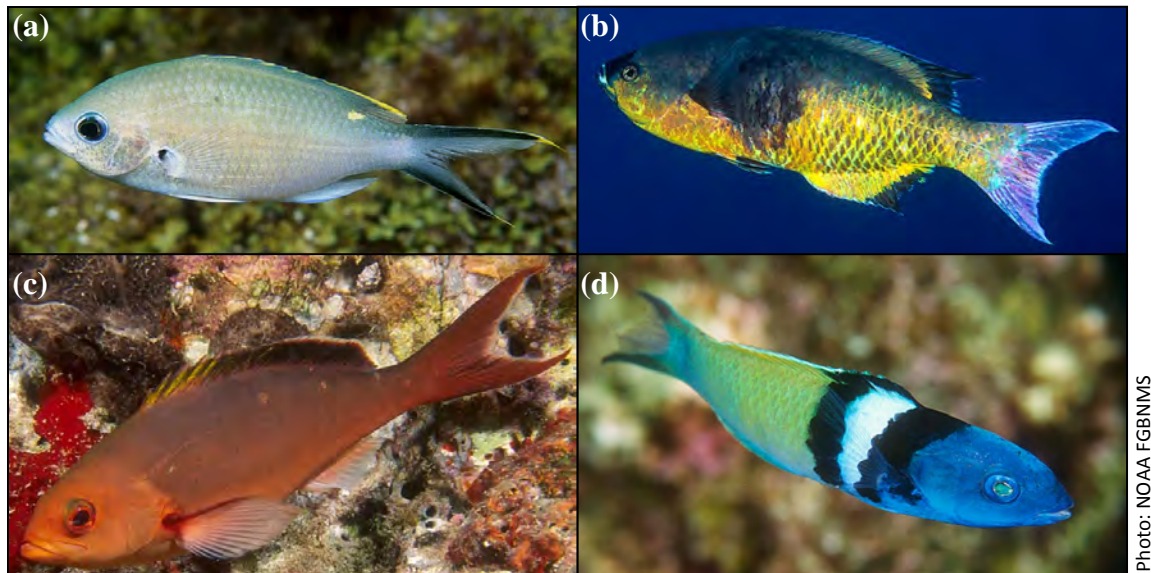


Figure 5.2. Most abundant fish species in 2013: (a) Brown Chromis, (b) Creole Wrasse, (c) Atlantic Creolefish, (d) Bluehead.

A total of 24 families and 74 species were recorded in 2013 for all samples combined. Overall, mean species richness was 21.9 ( $\pm 0.5$  SE), and similar between banks, with 20.6 ( $\pm 4.4$  SE) at EFGB and 23.1 ( $\pm 2.2$  SE) at WFGB.

### Sighting Frequency and Occurrence

The most frequently sighted species from both banks was the Bicolor Damselfish (*Stegastes partitus*), observed in all surveys (Figure 5.3). Other frequently sighted species include Bluehead, Atlantic Creolefish, and Brown Chromis (Table 5.1). Most shark and ray species are considered “rare” (occur in <20% of all surveys) (REEF 2014), and none were observed at the FGB during this study period.



Photo: NOAA FGBNIMS

Figure 5.3. A Bicolor Damselfish, the most frequently sighted species at the FGB in 2013.

Table 5.1. Top 10 most frequently sighted species by bank, including sighting frequency for all surveys.

Species ID (Family Name: Species Name (Common Name - Trophic Guild))	2013		All Surveys
	EFGB	WFGB	
Pomacentridae: <i>Stegastes partitus</i> (Bicolor Damselfish)	100.0	100.0	100.0
Labridae: <i>Thalassoma bifasciatum</i> (Bluehead)	95.8	100.0	97.9
Serranidae: <i>Paranthias furcifer</i> (Atlantic Creolefish)	100.0	91.7	95.8
Pomacentridae: <i>Chromis multilineata</i> (Brown Chromis)	91.7	100.0	95.8
Tetraodontidae: <i>Canthigaster rostrata</i> (Sharpnose Puffer)	91.7	91.7	91.7
Acanthuridae: <i>Acanthurus coeruleus</i> (Blue Tang)	83.3	95.8	89.6
Pomacentridae: <i>Chromis cyanea</i> (Blue Chromis)	70.8	100.0	85.4
Labridae: <i>Bodianus rufus</i> (Spanish Hogfish)	79.2	83.3	81.3
Kyphosidae: <i>Kyphosus saltatrix</i> (Bermuda Chub)	79.2	83.3	81.3
Labridae: <i>Scarus vetula</i> (Queen Parrotfish)	75.0	83.3	79.2

## Species Density

Mean fish density (abundance per 100 m<sup>2</sup>) was highest at WFGB (203 ± 95 SE) and lowest at EFGB (152 ± 79 SE). The high fish density at WFGB was caused by high local abundance of Brown Chromis, with a mean density of 76 ± 63 SE individuals per 100m<sup>2</sup> at WFGB in comparison to a mean density of 47 ± 75 SE individuals per 100m<sup>2</sup> at EFGB.

## Trophic Group Analysis

Species were grouped by trophic guild into four major categories, as defined by NOAA's Center for Coastal Monitoring and Assessment (CCMA) BioGeography Branch fish-trophic level database: herbivores, piscivores, invertivores, and planktivores (Johnston et al. 2013). Size-frequency distributions, using the relative abundance of species for each trophic guild, were graphed for each trophic guild. At both EFGB and WFGB, herbivores, invertivores, and planktivores were dominated by smaller individuals, whereas piscivores were dominated by larger individuals at WFGB and moderately sized individuals at EFGB (Figure 5.4).

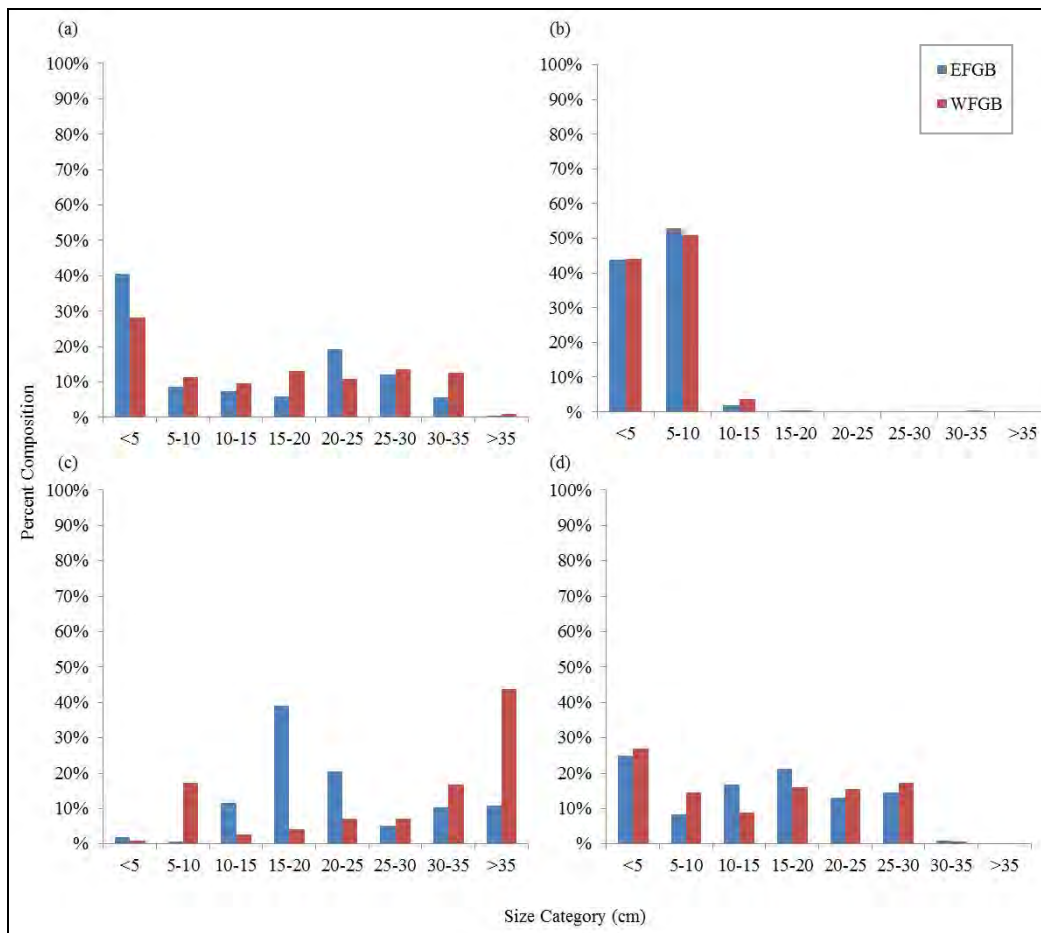


Figure 5.4. Size distribution by trophic guild, where blue columns represent EFGB and red columns represent WFGB. (a) herbivores, (b) invertivores, (c) piscivores, and (d) planktivores.



### Biomass Analysis

Mean biomass was calculated to be 138.13 g/m<sup>2</sup> ( $\pm 92.58$  SE) at EFGB and 200.04 g/m<sup>2</sup> ( $\pm 228.12$  SE) at WFGB. ANOSIM analysis indicates that while biologically significant, variation in biomass between banks was indistinguishable between surveys (Global R=0.065, p<0.7%). SIMPER analysis identified the greatest contributor to the observed dissimilarity between banks were Bermuda Chub (*Kyphosus saltatrix*), Atlantic Creolefish, and Great Barracuda (*Sphyraena barracuda*).

When summed into trophic guilds, the herbivores possessed the highest mean biomass for all surveys, with 56.12 g/m<sup>2</sup> ( $\pm 64.51$  SE). The lowest mean biomass from all surveys was represented by the invertivores, with 15.04 g/m<sup>2</sup> ( $\pm 16.44$  SE) (Table 5.4, Figure 5.6). No significant differences were found between banks.

Table 5.4. Mean biomass  $\pm$  SE, in g/m<sup>2</sup>, for each trophic guild by bank and between all surveys.

Trophic Group	2013		All Surveys
	EFGB	WFGB	
Herbivore	50.19 $\pm$ 50.03	62.05 $\pm$ 76.99	56.12 $\pm$ 64.51
Invertivore	11.60 $\pm$ 19.49	18.48 $\pm$ 12.16	15.04 $\pm$ 16.44
Planktivore	35.86 $\pm$ 56.98	61.91 $\pm$ 128.18	48.89 $\pm$ 99.01
Piscivore	40.47 $\pm$ 38.14	57.60 $\pm$ 77.80	49.04 $\pm$ 61.23

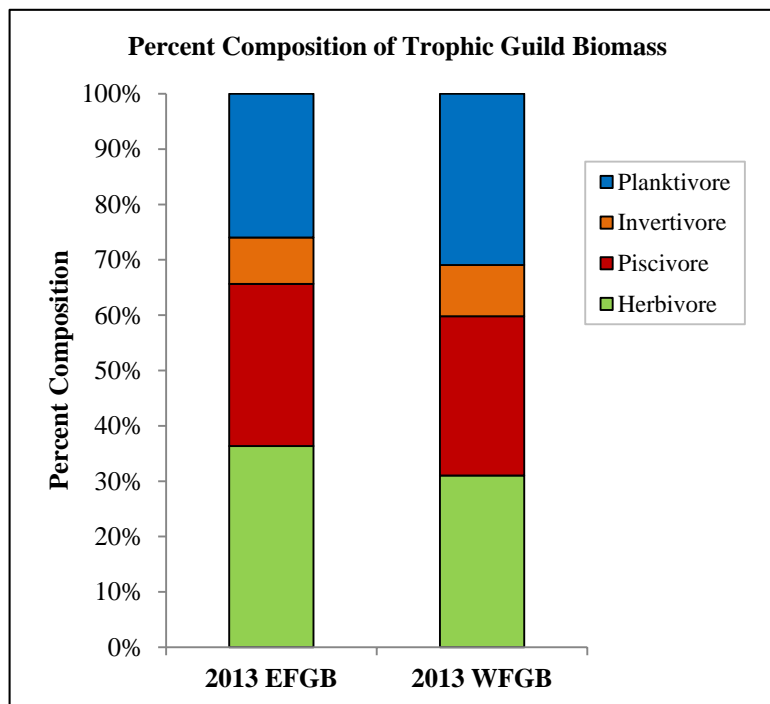


Figure 5.6. Percent composition of biomass for each trophic guild.

Within each trophic guild, biomass for each species was calculated (Table 5.5). For the herbivore guild, 71.0% of the biomass was contributed by Bermuda Chub. For the invertivore guild, the greatest contribution was from Brown Chromis (44.8% of all biomass). For the piscivore guild, Great Barracuda contributed the greatest biomass to all surveys, at 40%. For the planktivore guild, the greatest contribution was Atlantic Creolefish (77.6% of all biomass).

Table 5.5. Biomass, in g/m<sup>2</sup>, of each species, grouped by trophic guild (herbivores: H, piscivores: P, invertivores: I, and planktivores: PL).

Trophic Guild	Species ID (Family Name:Species Name (Common Name - Trophic Guild))	2013		All Surveys
		EFGB	WFGB	
Herbivore	Kyphosidae: <i>Kyphosus saltatrix</i> (Bermuda Chub - H)	34.9	44.8	39.8
	Labridae: <i>Sparisoma viride</i> (Stoplight Parrotfish - H)	1.5	7.3	4.4
	Balistidae: <i>Melichthys niger</i> (Black Durgon - H)	4.3	3.0	3.7
	Acanthuridae: <i>Acanthurus coeruleus</i> (Blue Tang - H)	5.1	2.0	3.6
	Labridae: <i>Scarus vetula</i> (Queen Parrotfish - H)	2.1	3.0	2.5
	Labridae: <i>Scarus taeniopterus</i> (Princess Parrotfish - H)	0.7	0.8	0.8
	Labridae: <i>Sparisoma aurofrenatum</i> (Redband Parrotfish - H)	0.8	0.4	0.6
	Acanthuridae: <i>Acanthurus chirurgus</i> (Doctorfish - H)	0.4	0.1	0.2
	Pomacentridae: <i>Microspathodon chrysurus</i> (Yellowtail Damselfish - H)	0.1	0.2	0.2
	Pomacentridae: <i>Stegastes partitus</i> (Bicolor Damselfish - H)	0.1	0.2	0.1
	Acanthuridae: <i>Acanthurus bahianus</i> (Ocean Surgeonfish - H)	0.1	0.1	0.1
	Pomacentridae: <i>Stegastes variabilis</i> (Cocoa Damselfish - H)	<0.1	0.1	<0.1
	Pomacentridae: <i>Stegastes adustus</i> (Dusky Damselfish - H)	<0.1	<0.1	<0.1
	Labridae: <i>Sparisoma atomarium</i> (Greenblotch Parrotfish - H)	<0.1	<0.1	<0.1
	Labridae: <i>Scarus iseri</i> (Striped Parrotfish - H)	<0.1	<0.1	<0.1
	Pomacentridae: <i>Stegastes diencaeus</i> (Longfin Damselfish - H)	<0.1	-	<0.1
	Blenniidae: <i>Ophioblennius macclurei</i> (Redlip Blenny - H)	<0.1	<0.1	<0.1
	Labridae: <i>Sparisoma radians</i> (Bucktooth Parrotfish - H)	<0.1	<0.1	<0.1
	Gobiidae: <i>Coryphopterus punctipectophorus</i> (Spotted Goby - H)	-	<0.1	<0.1
	Invertivore	Pomacentridae: <i>Chromis multilineata</i> (Brown Chromis - I)	5.0	8.5
Balistidae: <i>Canthidermis sufflamen</i> (Ocean Triggerfish - I)		0.4	5.0	2.7
Lutjanidae: <i>Lutjanus griseus</i> (Gray Snapper - I)		2.1	0.2	1.2
Pomacanthidae: <i>Pomacanthus paru</i> (French Angelfish - I)		0.7	1.5	1.1
Pomacanthidae: <i>Holacanthus ciliaris</i> (Queen Angelfish - I)		1.0	0.2	0.6
Labridae: <i>Bodianus rufus</i> (Spanish Hogfish - I)		0.2	0.6	0.4
Labridae: <i>Thalassoma bifasciatum</i> (Bluehead - I)		0.1	0.3	0.2

Trophic Guild	Species ID (Family Name:Species Name (Common Name - Trophic Guild))	2013		All Surveys
		EFGB	WFGB	
Piscivore	Carangidae: <i>Alectis ciliaris</i> (African Pompano - I)	-	0.4	0.2
	Chaetodontidae: <i>Chaetodon sedentarius</i> (Reef Butterflyfish - I)	0.2	0.2	0.2
	Mullidae: <i>Mulloidichthys martinicus</i> (Yellow Goatfish - I)	0.3	0.1	0.2
	Pomacentridae: <i>Stegastes planifrons</i> (Threespot Damselfish - I)	0.1	0.3	0.2
	Chaetodontidae: <i>Chaetodon ocellatus</i> (Spotfin Butterflyfish - I)	0.3	0.1	0.2
	Pomacentridae: <i>Abudefduf saxatilis</i> (Sergeant Major - I)	0.1	0.2	0.2
	Serranidae: <i>Epinephelus guttatus</i> (Red Hind - I)	0.3	-	0.1
	Ostraciidae: <i>Lactophrys triqueter</i> (Smooth Trunkfish - I)	0.1	0.1	0.1
	Balistidae: <i>Balistes vetula</i> (Queen Triggerfish - I)	-	0.2	0.1
	Pomacanthidae: <i>Holacanthus tricolor</i> (Rock Beauty - I)	<0.1	0.1	0.1
	Ostraciidae: <i>Acanthostracion polygonius</i> (Honeycomb Cowfish - I)	-	0.2	0.1
	Serranidae: <i>Epinephelus adscensionis</i> (Rock Hind - I)	0.1	<0.1	0.1
	Tetraodontidae: <i>Canthigaster rostrata</i> (Sharpnose Puffer - I)	<0.1	0.1	0.1
	Monacanthidae: <i>Cantherhines pullus</i> (Orange Spotted Filefish - I)	0.1	<0.1	0.1
	Monacanthidae: <i>Cantherhines macrocerus</i> (Whitespotted Filefish - I)	0.1	<0.1	<0.1
	Chaetodontidae: <i>Chaetodon striatus</i> (Banded Butterflyfish - I)	0.1	-	<0.1
	Labridae: <i>Halichoeres radiatus</i> (Pudding wife - I)	0.1	-	<0.1
	Labridae: <i>Halichoeres maculipinna</i> (Clown Wrasse - I)	0.1	-	<0.1
	Serranidae: <i>Cephalopholis fulva</i> (Coney - I)	<0.1	-	<0.1
	Mullidae: <i>Pseudupeneus maculatus</i> (Spotted Goatfish - I)	<0.1	<0.1	<0.1
	Chaetodontidae: <i>Prognathodes aculeatus</i> (Longsnout Butterflyfish - I)	<0.1	<0.1	<0.1
	Holocentridae: <i>Holocentrus rufus</i> (Longspine Squirrelfish - I)	<0.1	<0.1	<0.1
	Labridae: <i>Halichoeres garnoti</i> (Yellowhead Wrasse - I)	<0.1	-	<0.1
	Labridae: <i>Bodianus pulchellus</i> (Spotfin Hogfish - I)	-	<0.1	<0.1
Cirrhitidae: <i>Amblycirrhitus pinos</i> (Redspotted Hawkfish - I)	-	<0.1	<0.1	
Gobiidae: <i>Elacatinus oceanops</i> (Neon Goby - I)	<0.1	<0.1	<0.1	
Piscivore	Sphyraenidae: <i>Sphyraena barracuda</i> (Barracuda - P)	22.5	16.7	19.6
	Carangidae: <i>Caranx latus</i> (Horse-eye Jack - P)	0.4	23.2	11.8
	Lutjanidae: <i>Lutjanus jocu</i> (Dog Snapper - P)	2.1	7.6	4.8
	Carangidae: <i>Caranx lugubris</i> (Black Jack - P)	4.5	2.0	3.3
	Serranidae: <i>Mycteroperca tigris</i> (Tiger Grouper - P)	5.1	0.8	3.0
	Serranidae: <i>Mycteroperca bonaci</i> (Black Grouper - P)	-	5.5	2.7

Trophic Guild	Species ID (Family Name:Species Name (Common Name - Trophic Guild))	2013		All Surveys
		EFGB	WFGB	
	Carangidae: <i>Carangoides ruber</i> (Bar Jack - P)	2.2	0.3	1.3
	Carangidae: <i>Caranx crysos</i> (Blue Runner - P)	1.8	0.1	0.9
	Scorpaenidae: <i>Pterois volitans/miles</i> (Lionfish - P)	0.4	0.5	0.5
	Serranidae: <i>Mycteroperca interstitialis</i> (Yellowmouth Grouper - P)	0.6	0.3	0.4
	Serranidae: <i>Cephalopholis cruentata</i> (Graysby - P)	0.4	0.2	0.3
	Serranidae: <i>Mycteroperca phenax</i> (Scamp - P)	0.1	0.2	0.2
	Muraenidae: <i>Gymnothorax moringa</i> (Spotted Moray - P)	0.3	-	0.1
	Carangidae: <i>Seriola rivoliana</i> (Almaco Jack - P)	-	0.3	0.1
	Aulostomidae: <i>Aulostomus maculatus</i> (Trumpetfish - P)	-	0.1	<0.1
	Serranidae: <i>Liopropoma rubre</i> (Peppermint Bass - P)	<0.1	-	<0.1
	Inermiidae: <i>Emmelichthys atlanticus</i> (Bonnetmouth - P)	-	<0.1	<0.1
Planktivore	Serranidae: <i>Paranthias furcifer</i> (Atlantic Creolefish - PL)	32.0	43.9	37.9
	Labridae: <i>Clepticus parrae</i> (Creole Wrasse - PL)	3.3	17.4	10.4
	Pomacentridae: <i>Chromis cyanea</i> (Blue Chromis - PL)	0.1	0.5	0.3
	Lutjanidae: <i>Ocyurus chrysurus</i> (Yellowtail Snapper - PL)	0.5	-	0.2
	Pomacentridae: <i>Chromis scotti</i> (Purple Reefish - PL)	<0.1	0.1	<0.1
	Pomacentridae: <i>Chromis insolata</i> (Sunshinefish - PL)	<0.1	<0.1	<0.1
	Serranidae: <i>Schultzea beta</i> (School Bass - PL)	-	<0.1	<0.1

### Abundance-Biomass Curves

For all samples, w values remained close to 0, indicating a balanced community, comprised of both large and small species (Figure 5.7). Mean w values for EFGB were  $0.153 (\pm 0.117 \text{ SE})$  and for WFGB were  $0.095 (\pm 0.104 \text{ SE})$ . Comparisons between banks were made using a one-way ANOVA, with no data transformation. No significant differences were observed between the abundance and biomass dominance plots between banks.

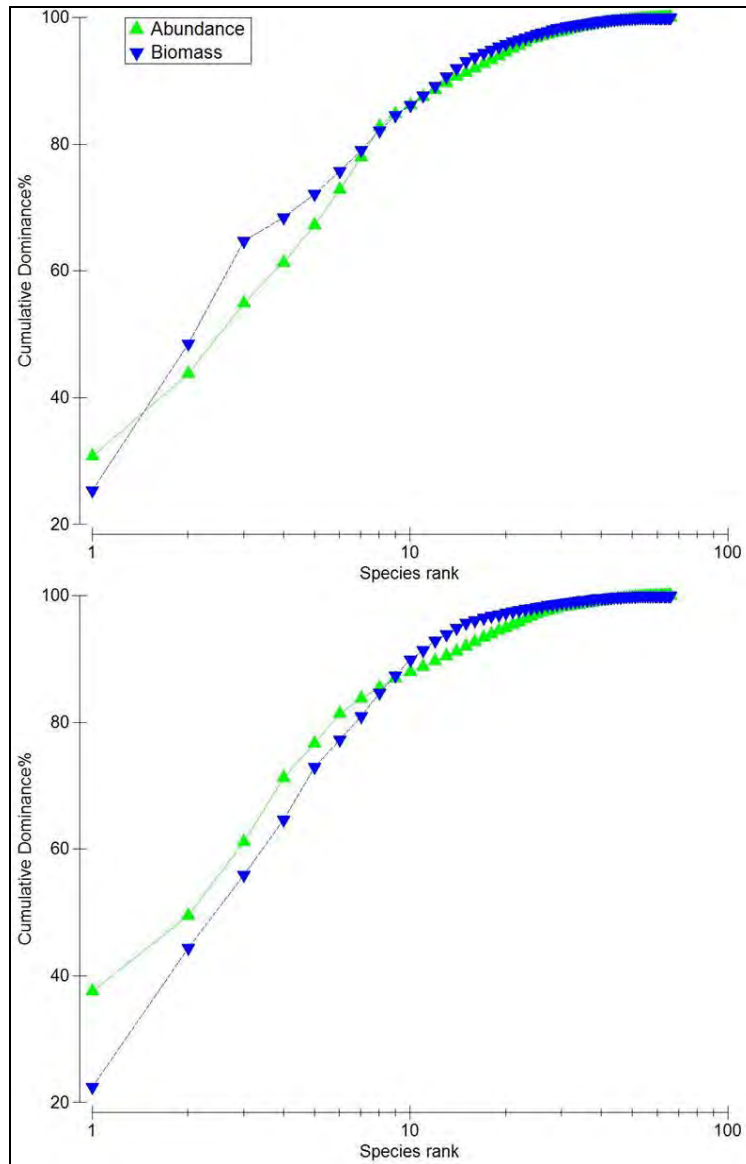


Figure 5.7. Abundance-Biomass curves for all surveys from (a) EFGB and (b) WFGB.

### Family Level Analysis

Due to particular concerns for species from the grouper (including *Mycteroperca*, *Cephalopholis* and *Epinephelus* genera only), snapper (*Lutjanidae* genus only), and parrotfish (including *Sparisoma* and *Scarus* genera only) families, additional analyses were conducted on these families.

The grouper family was comprised of 8 species from the *Mycteroperca*, *Cephalopholis* and *Epinephelus* genera: Graysby (*Cephalopholis cruentata*), Coney (*Cephalopholis fulva*), Rock Hind (*Epinephelus adscensionis*), Red Hind (*Epinephelus guttatus*), Black

Grouper (*Mycteroperca bonaci*), Yellowmouth Grouper (*Mycteroperca interstitialis*), Scamp (*Mycteroperca phenax*), and Tiger Grouper (*Mycteroperca tigris*). ANOSIM results indicate no significant differences in community composition based on density or biomass.

Mean biomass of small bodied grouper, including Graysby, Coney, Rock Hind, and Red Hind was  $0.5 \text{ g/m}^2$ , with higher mean biomass at EFGB ( $0.8 \text{ g/m}^2$ ) in comparison to WFGB ( $0.2 \text{ g/m}^2$ ). Mean biomass of large bodied grouper, including Black Grouper, Yellowmouth Grouper, Scamp, and Tiger Grouper was  $6.3 \text{ g/m}^2$ , with similar means between EFGB and WFGB. Large bodied grouper size frequencies were graphed for each species (Figure 5.8). Size at maturity was included, when available, for the species.

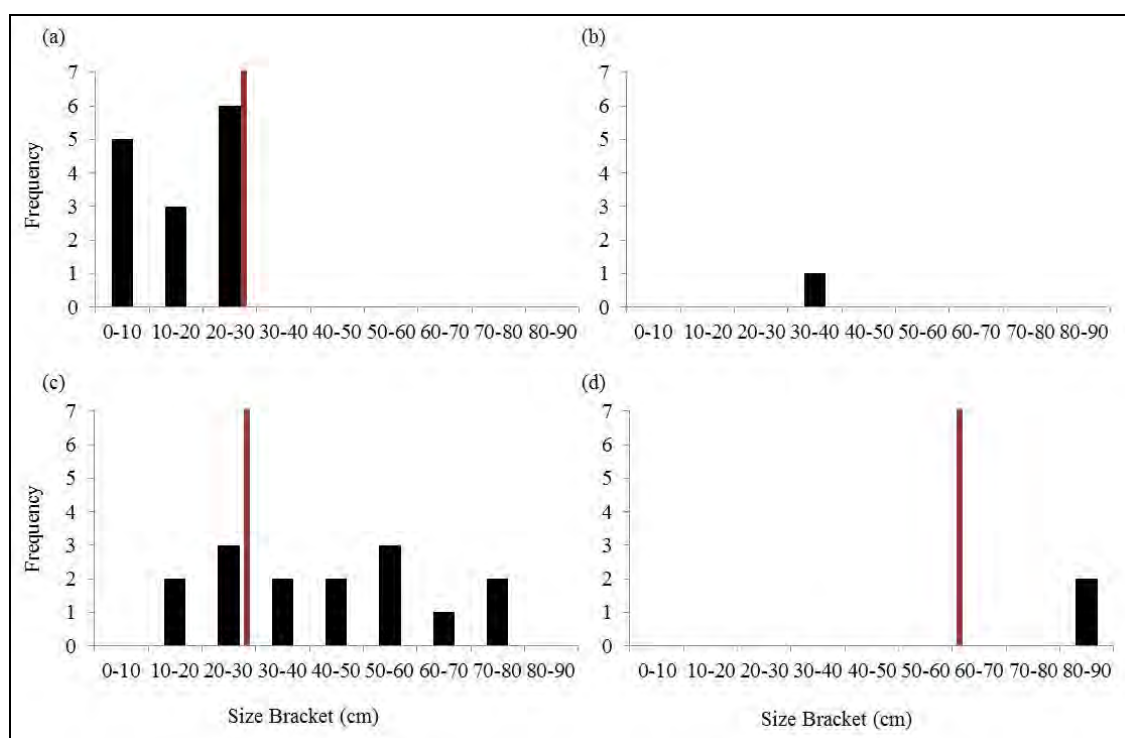


Figure 5.8. Size frequency of grouper species observed during 2013 includes (a) Yellowmouth Grouper, (b) Scamp, (c) Tiger Grouper, and (d) Black Grouper.

Vertical solid red lines represent estimated size of female maturity, when available, (a) (SAFMC 2005), (c) (Heemstra and Randall 1993), and (d) (Brule et al. 2003).

The snapper family was comprised of 3 species from the *Lutjanidae* genus: Yellowtail Snapper (*Ocyurus chrysurus*), Gray Snapper (*Lutjanus griseus*), and Dog Snapper (*Lutjanus jocu*). ANOSIM results indicate a significant, but small, spatial variation in snapper community composition based on density only (Global  $R=0.046$ ,  $p<1.8\%$ ) and biomass (Global  $R=0.044$ ,  $p<2.3\%$ ). The observed dissimilarity between banks, with regard to density, was contributed to predominantly by Dog Snapper.

Mean biomass of snapper was 6.2 g/m<sup>2</sup>, with higher mean biomass at WFGB (7.8 g/m<sup>2</sup>) than at EFGB (4.7 g/m<sup>2</sup>). Snapper size frequencies were graphed for each species (Figure 5.9), and size at maturity was included when available for the species.

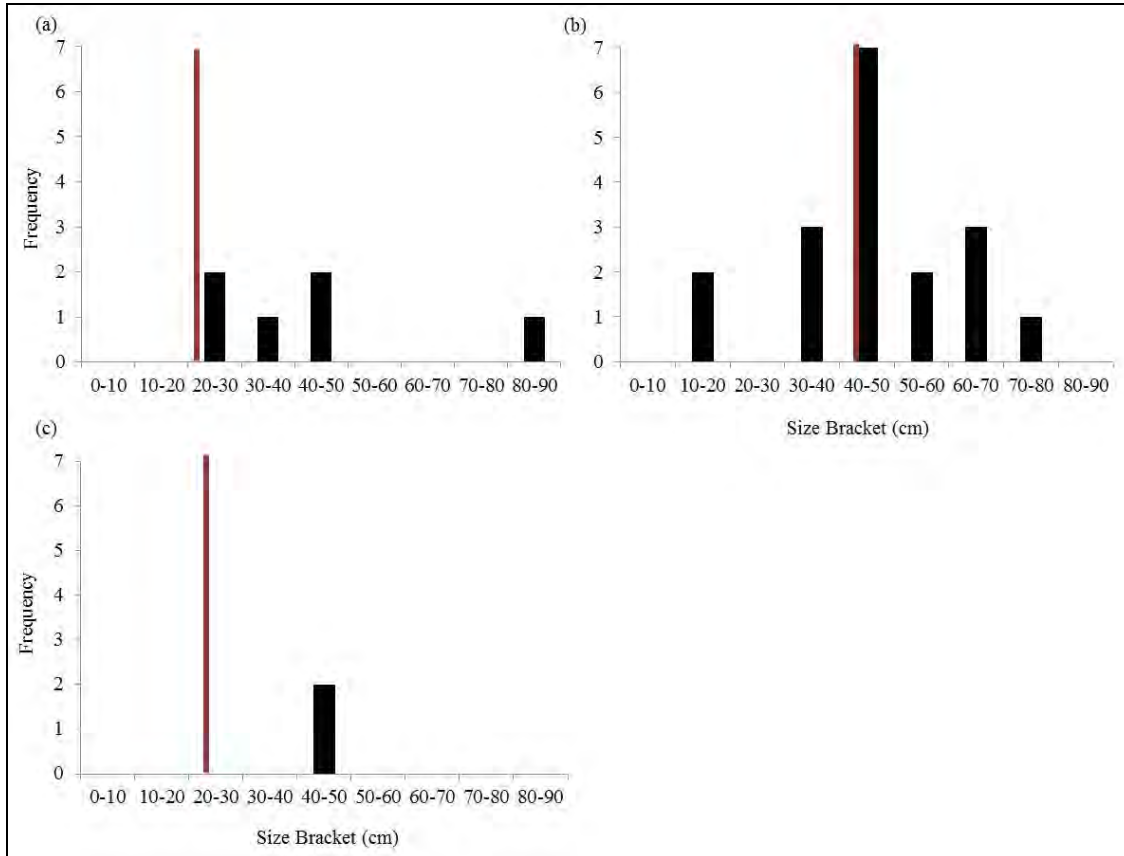


Figure 5.9. Size frequency of snapper species observed during 2013 includes (a) Gray Snapper, (b) Dog Snapper, and (c) Yellowtail Snapper.

Vertical solid red lines represent estimated size of female maturity, (a) (Garcia-Cagide et al. 1994), (b) (Garcia-Cagide et al. 1994), and (c) (Froese and Pauly 2014).

Parrotfish fishes have been identified as an important species group on coral reefs (Jackson et al. 2014). Parrotfish at the FGB included 7 species: *Scarus iseri* (Striped Parrotfish), *Scarus taeniopterus* (Princess Parrotfish), *Scarus vetula* (Queen Parrotfish), *Sparisoma atomarium* (Greenblotch Parrotfish), *Sparisoma aurofrenatum* (Redband Parrotfish), *Sparisoma radians* (Bucktooth Parrotfish), and *Sparisoma viride* (Stoptlight Parrotfish). ANOSOM results indicate no significant temporal differences in community composition based on density or biomass.

Mean biomass of parrotfishes was 8.4 g/m<sup>2</sup>, with higher mean biomass at WFGB (11.6 g/m<sup>2</sup>) than at EFGB (5.1 g/m<sup>2</sup>). This observed difference was primarily due to Stoptlight Parrotfish. From 2009–2013 parrotfish biomass has varied, and analysis of increasing

parrotfish biomass against mean macroalgae cover showed no trend. However, increasing parrotfish biomass showed a marginal negative trend with macroalgae cover (Figure 5.10).

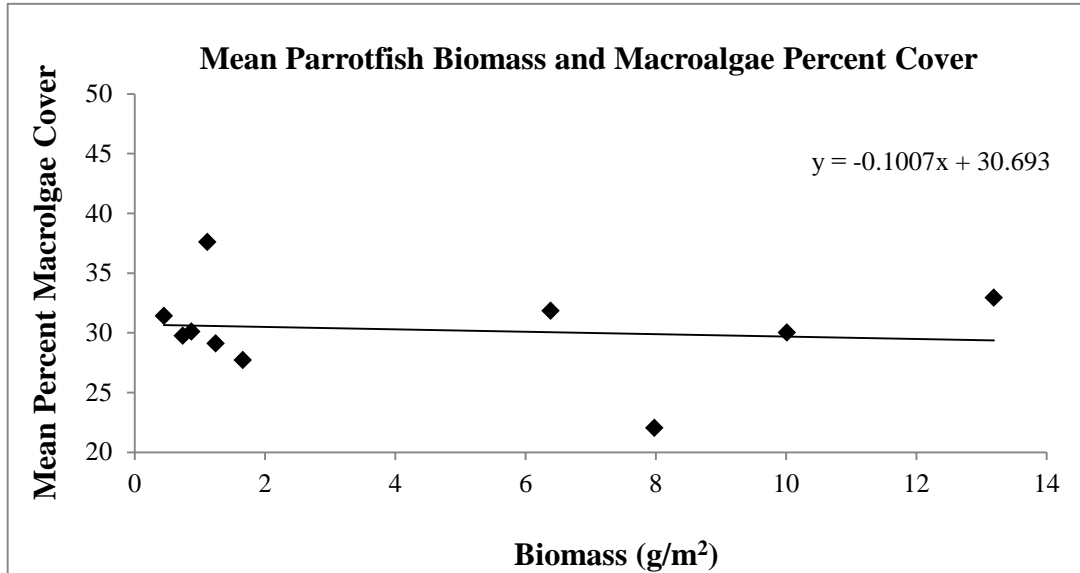


Figure 5.10. Mean biomass (g/m<sup>2</sup>) of parrotfishes against percent mean macroalgae cover (from random transects) for each bank, from 2009–2013.

This reporting year marked the first documentation of Lionfish (*Pterois volitans/miles*) in the long-term monitoring dataset (Figure 5.11). Lionfish are invasive and native to the Indo-Pacific. Sighting frequency for the species for all surveys in 2013 was 16.7%, ranking Lionfish the 37<sup>th</sup> most frequently sighted species of 75. Total Lionfish density at the EFGB was 5 individuals, while the WFGB was 6 individuals. Mean density for all surveys was <1 per 100m<sup>2</sup> (0.13).



Photo: Amanda Sterne/TAMUG

Figure 5.11. Lionfish hovering at the WFGB.



## Fish Surveys Discussion

The fish communities at EFGB and WFGB are considered to be low in species diversity but high in biomass (Zimmer et al. 2010); they have significantly different fish assemblages compared to other reef systems in the Caribbean, primarily due to the limited presence of lutjanids and haemulids (Rooker et al. 1997).

The observed fish assemblages of EFGB and WFGB occur near the northern latitudinal limit of coral reefs and are remote from other tropical reefs. The high number of oil and gas production platforms in the Gulf of Mexico, in addition to the mooring buoys located at the banks from 1990 onward, may have promoted the dispersal of additional fish species and allowed some to reach the FGB (Boland et al. 1983; Rooker et al. 1997; Gittings 1998).

Fish surveys conducted in 2013 indicate an abundant reef fish community at both EFGB and WFGB, as observed in previous annual monitoring surveys (Precht et al. 2006; Zimmer et al. 2010; Johnston et al. 2013; Johnston et al. 2015 in review). Though some results indicate a significant spatial variation in community composition, statistical R values indicate that this difference is barely separable between groups, and is therefore considered uninformative. With this in mind, no distinct differences were observed between banks, suggesting that, despite small variations, EFGB and WFGB fish communities are similar.

The FGB is documented to have a lower species richness and overall abundance of herbivorous fishes than other Caribbean reefs (Rezak 1985; Dennis and Bright 1988). Historically, low macroalgae cover has been reported in the annual monitoring, but recent data suggest a gradual increase in macroalgae cover over time. During this study period, the herbivore guild possessed the greatest mean biomass, contributing to over 30% of the total biomass. Within the herbivore guild, over 70% of the total biomass is attributed to Bermuda Chub. However, the piscivore guild was the greatest contributor to the observed variations between samples, to which Great Barracuda contributed to over 40% of the total biomass.

Abundance-biomass curves have historically been used to infer community health, where a community dominated by few large species is considered “pristine” and a community dominated by many small species is considered “impacted” (DeMartini et al. 2008; SOKI Wiki 2014). Results indicate that the fish communities of the FGB are evenly distributed, which means that the population can be considered moderately disturbed, and somewhat lacking in density of large fishes.

From the large bodied groupers observed, all Yellowmouth Grouper were considered too small to be sexually mature, while Tiger Grouper and Black Grouper possessed multiple individuals of sizes to be considered sexually mature. In contrast to the grouper population, the snapper community was dominated by few large species. Most of the

snapper observed were considered of large enough size to be sexually mature (Garcia-Cagide et al. 1994; Froese and Pauly 2014). It should be noted that at EFGB and WFGB, typical recruitment/nursery habitat for snappers (mangroves and sea grasses) are not present, and the mechanism for recruitment of this family to the area is unknown.

Parrotfish have been identified as key reef species, with their abundance and biomass being positively correlated with coral cover (Jackson et al. 2014). The mean biomass of parrotfish at the FGB is considered low (Jackson et al. 2014; Randall 1961), similar to other Caribbean reefs (Table 5.12). However, low parrotfish biomass is frequently associated with high fishing pressure and low coral cover, neither of which is apparent at the FGB. This population warrants additional attention and monitoring of long-term trends in future reports.

Table 5.12 Mean biomass ( $\text{g/m}^2$ ) for parrotfish at other Caribbean reefs.

Location	Biomass ( $\text{g/m}^2$ )
Flower Garden Banks	8.4
Belize	12.0
Guatemala	6.7
Honduras	4.4
Mexico	17.1

All data, with the exception of the FGB data, is from AGRRA 2012 .

Lionfish were recorded in surveys for the first time in 2013 LTM efforts, but have been observed by divers on the reefs since 2011. Since their first observation, numbers have rapidly increased every year. Other monitoring efforts that studied the reef from 2010–2012 only documented lionfish in surveys in 2012, where a mean density of 0.44 individuals per  $100 \text{ m}^2$  was observed (Clark et al. 2014). Though this recorded density was greater than that reported here for 2013, this is not due to a decline in the lionfish population. It is likely due to the restricted habitat sampled in this study: both study sites are located on the shallower portions of the reef cap and does not encompass the deeper reef.

---

## Chapter 6

### CONCLUSIONS



A Yellowmouth Grouper (*mycteroperca interstitialis*) swims over the reef cap at East Flower Garden Bank.

## Conclusions

This report summarizes 2013 benthic and fish community observations as part of the annual long-term monitoring program conducted at EFGB and WFGB. In over 25 years of continuous monitoring, the coral reefs of EFGB and WFGB have maintained levels of coral cover above 50%. Even though coral cover remains above 50%, macroalgae cover has increased significantly since the beginning of the monitoring program. The number of coral and fish species at EFGB and WFGB are lower than the most diverse areas of the Caribbean and western Atlantic; however, percent coral cover and fish abundance are much higher.

The long-term monitoring program at EFGB and WFGB is one of the longest running monitoring programs of a coral reef anywhere in the world. An ongoing monitoring program at the FGB is critical to ensure data are available to discriminate among the drivers of ecosystem variation in the northern Gulf of Mexico. The relatively stable conditions on the reef study locations since the beginning of the monitoring program, combined with the historical data collection and the proximity to oil and gas development, make the FGB an ideal sentinel site for continued support of a long-term monitoring program.

Problems that affect coral reefs throughout the region, including land-based sources of pollution and disease have not had a major impact at the FGB, partially due to their relative isolation and depth; however, increased impacts from climate change, increased algal cover, and invasive species, are reasons for increased vigilance and perhaps concern for the future of the resources. Continued monitoring will document long-term changes in condition and will be useful for management decisions and future research focused on the dynamics of the robust benthic communities and the fish populations they support.

## References

- AGRRA (Atlantic and Gulf Rapid Reef Assessment). **2003**. Status of Coral Reefs in the western Atlantic: Results of initial Surveys, Atlantic and Gulf Rapid Reef Assessment (AGRRA) Program. J.C. Lang, ed. Atoll Research Bulletin 496. Available at: [http://www.agrra.org/arb\\_volume.html](http://www.agrra.org/arb_volume.html)
- Aronson, R.B., P.J. Edmunds, W.F. Precht, D.W. Swanson, and D.R. Levitan. **1994**. Large- scale, long-term monitoring of Caribbean coral reefs: simple, quick, inexpensive methods. *Atoll Research Bulletin* 421:1–19.
- Aronson, R.B. and W.F. Precht. **2000**. Herbivory and algal dynamics on the coral reef at Discovery Bay, Jamaica. *Limnology and Oceanography* 45:251–255.
- Aronson, R. B. and W. F. Precht. **2001**. White-band disease and the changing face of Caribbean coral reefs. *Hydrobiologia* 460:25–38.
- Aronson, R.B., W.F. Precht, T.J. Murdoch, and M.L. Robbart. **2005**. Long-term persistence of coral assemblages on the Flower Garden Banks, northwestern Gulf of Mexico: implications for science and management. *Gulf of Mexico Science* 23:84–94.
- Ault, J. S., S. G. Smith, J. A. Bohnsack, J. Luo, D. E. Harper, and D. B. McClellan. **2006**. Building sustainable fisheries in Florida’s coral reef ecosystem: positive signs in the Dry Tortugas. *Bulletin of Marine Science* 78(3):633-654.
- Bohnsack, J.A. and S.P. Bannerot. **1986**. A stationary visual technique for quantitatively assessing community structure of coral reef fishes. NOAA Technical Report NMFS 41:1–15.
- Bohnsack, J.A. and D.E. Harper. **1988**. Length-weight relationships of selected marine reef fishes from southeastern United States and the Caribbean. NOAA Technical Memorandum NMFS-SEFC-215. 31 p.
- Boland, G.S., B.J. Gallaway, J.S. Baker, and G.S. Lewbel. **1983**. Ecological effects of energy development on reef fish of the Flower Garden Banks. Final Report. Bryan, TX: National Marine Fisheries Service. 499 p.
- Bray, J.R. and J.T. Curtis. **1957**. An ordination of upland forest communities of southern Wisconsin. *Ecological Monographs* 27:325-349.
- Bright, T.J., D.W. McGrail, R. Rezak, G.S. Boland, and A.R. Trippett. **1985**. The Flower Gardens: A compendium of information. U.S. Dept. of the Interior,

- Minerals Management Service, Gulf of Mexico OCS Region, New Orleans, LA. OCS Study MMS 85-0024. 103 p.
- Bruckner, A. 2010. Cayman Islands coral reef health and resilience assessments. Field report. June 1 -16, 2010. Khaled bin Sultan Living Oceans Foundation, Landover, MD. 63 p.
- Bruckner, A. 2012. Global reef expedition: Pedro Bank, Jamaica. Field report. March 10-20, 2012. Khaled bin Sultan Living Oceans Foundation, Landover, MD. 28 p.
- Brulé, T., Renán, X., Colás-Marrufo, T., Tuz-Sulub, A.N. **2003**. Reproduction in the protogynous black grouper (*Mycteroperca bonaci* (Poey)) from the southern Gulf of Mexico. Fisheries Bulletin 101: 463-475.
- Caldow, C., R. Clark, K. Edwards, S.D. Hile, C. Menza, E. Hickerson, and G.P. Schmahl. **2009**. Biogeographic characterization of fish communities and associated benthic habitats within the Flower Garden Banks National Marine Sanctuary: Sampling design and implementation of SCUBA surveys on the Coral Caps. NOAA Technical Memorandum NOS NCCOS 81. Silver Spring, MD. 134 p.
- Clarke, K.R. and R.M. Warwick. **2001**. Changes in marine communities: an approach to statistical analysis and interpretation. Plymouth Marine Laboratory, Plymouth, Devon, UK.
- Clark, R., Taylor, J.C., Buckel, C.A., Kracklet, L.M. (eds). **2014**. Fish and Benthic Communities of the Flower Garden Banks National Marine Sanctuary: Science to Support Sanctuary Management. NOAA Technical Memorandum NOS NCCOS 179. Silver Spring, MD. 317 p.
- Continental Shelf Associates (CSA). **1996**. Long-term monitoring at the East and West Flower Garden Banks. U.S. Dept. of the Interior, Minerals Management Service, Gulf of Mexico OCS Region, New Orleans, LA. OCS Study MMS 96-0046. 77 p.
- DeMartini, E.E., Friedlander, A.M., Sandin, S.A., Sala, E. **2008**. Differences in fish-assemblage structure between fished and unfished atolls in the northern Line Islands, central Pacific. Marine Ecology Progress Series 365: 199-215.
- Dennis, G.D. and T.J. Bright. **1988**. Reef fish assemblages on hard banks in the northwestern Gulf of Mexico. Bulletin of Marine Science 43:280–307.
- Dokken, Q.R., I.R. MacDonald, J.W. Tunnell, C.R. Beaver, G.S. Boland, and D.K. Hagman. **1999**. Long-term monitoring of the East and West Flower Garden Banks 1996–1997. U.S. Dept. of the Interior, Mineral Management Service, Gulf of Mexico OCS Region, New Orleans, LA. OCS Study MMS 99-0005. 101 p.

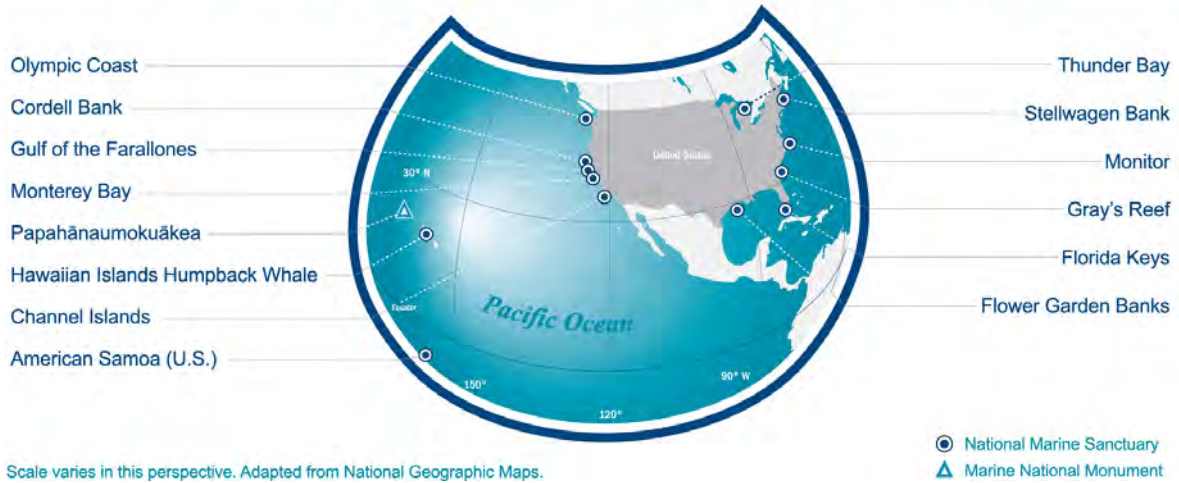
- Dokken, Q. R., I.R. MacDonald, J.W. Jr. Tunnell, T. Wade, K. Withers, S.J. Dilworth, T.W. Bates, C.R. Beaver, and C.M. Rigaud. **2003**. Long-term monitoring at the East and West Flower Garden Banks National Marine Sanctuary, 1998–2001: Final report. U.S. Dept. of the Interior, Minerals Management Service, Gulf of Mexico OCS Region, New Orleans, LA. OCS Study MMS 2003-031. 90 p.
- Froese, R. and D. Pauly. Editors. **2014**. FishBase. World Wide Web electronic publication. Last Accessed: 4/24/2014. [www.fishbase.org](http://www.fishbase.org)
- Garcia-Cagide, A., R. Claro, and B.V. Koshelev. **1994**. Reproducción. In: R. Claro (ed.) Ecplogía de loa peces marinos de Cuba. Inst. Oceanol. Acad. Cienc. Cuba. And Cen. Invest. Quintana Roo (CIQRO) México. 187-262 p.
- Gardner, T.A., I.M. Côté, J.A. Gill, A. Grant, and A.R. Watkinson. **2003**. Long-term region- wide declines in Caribbean corals. *Science* 301:958–960.
- Gittings, S.R. **1998**. Reef community stability on the Flower Garden Banks, northwest Gulf of Mexico. *Gulf of Mexico Science* 1998:161–169.
- Gittings S.R., G.S. Boland, K.J.P. Deslarzes, D.K. Hagman, and B.S. Holland. **1992**. Long-term monitoring at the East and West Flower Garden Banks. U.S. Dept. of the Interior, Minerals Management Service, Gulf of Mexico OCS Region, New Orleans, LA. OCS Study MMS 92-0006. 206 p.
- Goreau, T.F. and J.W. Wells. **1967**. The shallow water Scleractinia of Jamaica: revised list of species and their vertical distribution range. *Bulletin of Marine Science* 17:442–454.
- Heemstra, P.C. and J.E. Randall. **1993**. Groupers of the World (Family Serranidae, Subfamily Epinephelinae): An Annotated and Illustrated Catalogue of the Grouper, Rockcod, Hind, Coral Grouper and Lyretail Species Known to Date. FAO Fisheries Synopsis 125 (16) 382 p.
- Jackson, J.B.C., Donovan, M.K., Cramer, K.L., Lam, V.V. (editors). **2014**. Status and Trends of Caribbean coral reefs: 1970-2012. Global Coral Reef Monitoring Network, IUCN, Gland, Switzerland. 304 p.
- Jeffrey, C.F.G. 2004. Benthic habitats, fish assemblages, and resource protection in Caribbean marine sanctuaries. Dissertation, University of Georgia, Athens, Georgia. 145p.
- Johnston, M.A., M.F. Nuttall, R.J. Eckert, J.A. Embesi, N.C. Slowey, E.L. Hickerson, and G.P. Schmahl. **2013**. Long-term monitoring at the East and West Flower Garden Banks National Marine Sanctuary, 2009-2010, volume 1. U.S. Dept. of

- Interior, Bureau of Ocean Energy Management, Gulf of Mexico OCS Region, New Orleans, LA. OCS Study BOEM 2013-215. 362 p.
- Johnston, M.A., M.F. Nuttall, R.J. Eckert, J.A. Embesi, N.C. Slowey, E.L. Hickerson, and G.P. Schmahl. **2015 *in review***. Long-term monitoring at the East and West Flower Garden Banks National Marine Sanctuary, 2011–2012, volume 1: technical report. U.S. Dept. of Interior, Bureau of Ocean Energy Management, Gulf of Mexico OCS Region, New Orleans, Louisiana. OCS Study BOEM.
- Kohler, K.E. and S.M.Gill. **2006**. Coral point count with Excel extensions (CPCe): A Visual Basic program for the determination of coral and substrate coverage using random point count methodology. *Computers and Geosciences* 32: 1259–1269.
- Kraemer, G.P. **1982**. Population levels and growth rates of the scleractinian corals within the Diploria-Montastrea-Porites zones of the East and West Flower Garden banks. M.S. Thesis, Texas A&M University, College Station, TX. 138 pp.
- Kruskal, J.B. **1964**. Nonmetric multidimensional scaling: a numerical method. *Psychometrika* 29: 115-129.
- Newman, M. J. H., Paredes, G. A., Sala, E. and Jackson, J. B. C. **2006**. Structure of Caribbean coral reef communities across a large gradient of fish biomass. *Ecology Letters*, 9: 1216–1227.
- ONMS (Office of National Marine Sanctuaries). **2011**. Florida Keys National Marine Sanctuary Condition Report 2011. U.S. DOC, NOAA, ONMS, Silver Spring, MD. 105 p.
- Pina Amargós F, Hernández Fernández L, Clero Alonso L y González Sansón G. **2008**. Características de hábitats coralinos en Jardines de la Reina, Cuba. *Revista de Investigaciones Marinas*. 29 (3): 225–237.
- Precht, W.F., R.B. Aronson, K.J.P. Deslarzes, M.L. Robbart, A. Gelber, D. Evans, B. Gearheart, and B. Zimmer. **2006**. Long-term monitoring at the East and West Flower Garden Banks, 2002–2003: Final report. U.S. Dept. of the Interior, Minerals Management Service, Gulf of Mexico OCS Region, New Orleans, LA. OCS Study MMS 2004–031. 182 p.
- Precht, W.F., R.B. Aronson, K.J.P. Deslarzes, M.L. Robbart, D.J. Evans, B. Zimmer, and L. Duncan. **2008**. Long-term Monitoring at the East and West Flower Garden Banks, 2004–2005 Interim Report. Volume I: Technical Report. U.S. Dept. of the Interior, Minerals Management Service, Gulf of Mexico OCS Region, New Orleans, Louisiana. OCS Study MMS 2008–027. 123 p.



- Randall, J.E. **1961**. Overgrazing of algae by herbivorous marine fishes. *Ecology* 42: 812.
- REEF. **2014**. Reef Environmental Education Foundation. World Wide Web electronic publication. Last Accessed: 4/24/2014. [www.reef.org](http://www.reef.org)
- Rezak, R. **1985**. Geology of the Flower Garden Banks area. In: Bright, T.J., D.W. McGrail, R. Rezak, G.S. Boland, and A. Trippett, compilers. *The Flower Gardens: A compendium of information*. U.S. Dept. of the Interior, Minerals Management Service, Gulf of Mexico OCS Region, New Orleans, LA. OCS Study MMS 85-0024. 31–50 p.
- Rogers, C.S. and J. Beets. **2001**. Degradation of marine ecosystems and decline of fishery resources in marine protected areas in the U.S. Virgin Islands. *Environmental Conservation* 28:312–322.
- Rooker, J.R., Q.R. Dokken, C.V. Pattengill, and G.J. Holt. **1997**. Fish assemblages on artificial and natural reefs in the Flower Garden Banks National Marine Sanctuary, USA. *Coral Reefs* 16:83–92.
- SAFMC (South Atlantic Fishery Management Council). **2005**. Southeast Data, Assessment, and Review 19, Stock Assessment Report: Gulf of Mexico and South Atlantic Black Grouper Fishery for the South Atlantic Region. Charleston, SC. 661 p.
- Schmahl, G.P., E.L. Hickerson, and W.F. Precht. **2008**. Biology and ecology of coral reefs and coral communities in the Flower Garden Banks region, northwestern Gulf of Mexico. In: Riegl, B. and R. Dodge, eds. *Coral Reefs of the USA*. Springer Netherlands. 221–261 p.
- SOKI Wiki. **2014**. Abundance biomass curve (ABC method) - Indicators - Confluence, SOKI, Antarctic Climate and Ecosystems Co-operative Research Centre. Last Accessed: 12/8/ 2014. <http://www.soki.aq/x/foFm>
- Steneck, R.S., S. Arnold, and H. DeBey. **2011**. Status and trends of Bonaire's reefs 2011 and cause for grave concerns. University of Maine and NOAA National Marine Fisheries Service, Silver Spring, MD. 137 p.
- Zimmer, B., L. Duncan, R.B. Aronson, K.J.P. Deslarzes, D. Deis, M.L. Robbart, W.F. Precht, L. Kaufman, B. Shank, E. Weil, J. Field, D.J. Evans, and L. Whaylen. **2010**. Long-term monitoring at the East and West Flower Garden Banks, 2004–2008. Volume I: Technical report. U.S. Dept. of the Interior, Bureau of Ocean Energy Management, Regulation, and Enforcement, Gulf of Mexico OCS Region, New Orleans, LA. OCS Study BOEMRE 2010-052. 310 p.

## NATIONAL MARINE SANCTUARY SYSTEM



# AMERICA'S UNDERWATER TREASURES